



# Middle Floor Apartment in Puerto Banús

Price € 500,000

Bedrooms	2
Bathrooms	1
Build Size	102 m²
Plot Size	102 m²

## SETTING

- ✓ Beachfront

✓ Port

✓ Close To Sea

✓ Marina

✓ Front Line Beach Complex
- ✓ Commercial Area

✓ Close To Port

✓ Close To Town

✓ Close To Marina
- ✓ Beachside

✓ Close To Shops

✓ Close To Schools

✓ Urbanisation

## ORIENTATION

- ✓ East

✓ South

## CONDITION

- ✓ Renovation Required

## VIEWS

- ✓ Urban

✓ Street

## FEATURES

- ✓ Lift

✓ Restaurant On Site
- ✓ Near Transport
- ✓ Utility Room

## FURNITURE

- ✓ Optional

## SECURITY

- ✓ Gated Complex

## PARKING

- ✓ Underground

✓ Private

## UTILITIES

- ✓ Electricity

## CATEGORY

- ✓ Holiday Homes

✓ Investment

Exceptional Investment Opportunity Priced to Sell: Stunning Reform Project in the Prestigious Puerto Banús Marina  
Unlock the potential of this spacious 2-bedroom, apartment located in the peaceful part of the world-renowned Puerto

Banús Marina. With open views and a prime position, this property presents an incredible opportunity for investors looking to capitalize on the vibrancy and luxury of one of Spain's most iconic destinations.

The apartment offers a great location just steps away from the designer shops, gourmet restaurants, and high-end amenities that Puerto Banús is famous for. It's also well-equipped with a parking space and lift access, ensuring convenience and ease of living.

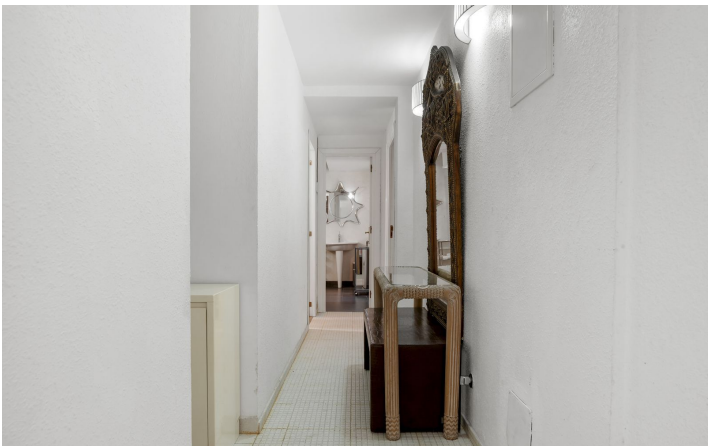
This reform project allows you to create your own dream space, or tap into the lucrative potential for rental income in the heart of the Costa del Sol. It's a rare chance to invest in the luxurious Puerto Banús lifestyle and transform this property into a true gem.

Don't miss out on this opportunity!

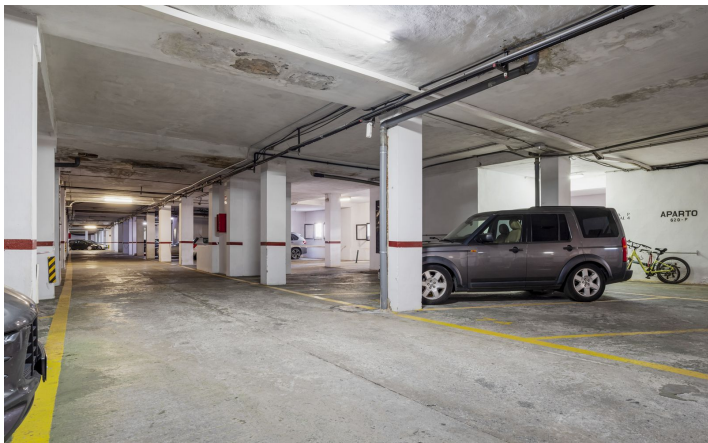
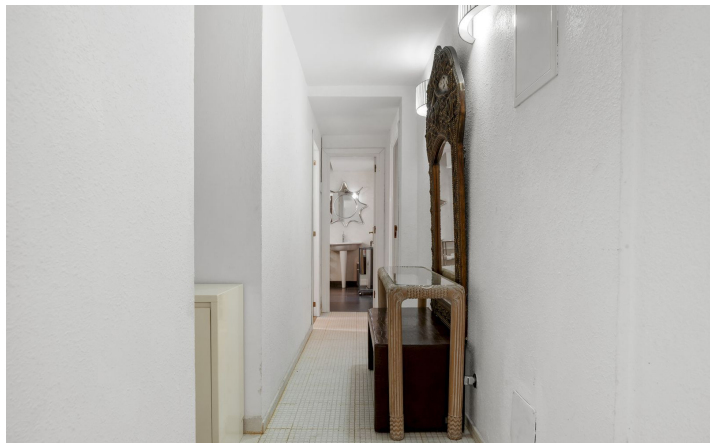
[View Property Online](#)



GALLERY







ViVi Real Estate | Calle Almendralejo de Jarales 5 Mijas Costa, 29640

Tel: +34 672 816 975

Email: [sales@vivi-realestate.com](mailto:sales@vivi-realestate.com) | Web: [www.vivi-realestate.com](http://www.vivi-realestate.com)