

# Ground Floor Apartment in Nueva Andalucía

Price € 590,000

|            |        |
|------------|--------|
| Bedrooms   | 2      |
| Bathrooms  | 2      |
| Build Size | 109 m² |
| Terrace    | 30 m²  |
| Plot Size  | 139 m² |

SETTING

- ✓

Town
- ✓

Close To Golf
- ✓

Close To Shops
- ✓

Close To Sea
- ✓

Close To Schools
- ✓

Urbanisation

ORIENTATION

- ✓

East

CONDITION

- ✓

Good

POOL

- ✓

Communal

CLIMATE CONTROL

- ✓

Fireplace

VIEWS

- ✓

Mountain
- ✓

Garden

FEATURES

- ✓

Fitted Wardrobes
- ✓

Near Transport
- ✓

Private Terrace
- ✓

Gym
- ✓

Paddle Tennis
- ✓

Tennis Court
- ✓

Utility Room
- ✓

Ensuite Bathroom
- ✓

Access for people with reduced mobility
- ✓

Marble Flooring
- ✓

Double Glazing
- ✓

Fiber Optic

FURNITURE

- ✓

Not Furnished

KITCHEN

- ✓

Fully Fitted

GARDEN

- ✓

Communal
- ✓

Private
- ✓

Landscaped

SECURITY

- ✓

Gated Complex
- ✓

Entry Phone
- ✓

Alarm System
- ✓

24 Hour Security

## PARKING

✓ Covered

✓ Private

## CATEGORY

✓ Golf

✓ Holiday Homes

✓ Investment

---

### Stunning Ground Floor Apartment in Nueva Andalucía's Prestigious Aloha Golf Valley

Discover your dream home in the heart of Marbella's exclusive Nueva Andalucía Golf Valley! This beautiful 109 m² ground floor apartment in the sought-after Aloha area offers a perfect blend of luxury, comfort, and convenience. With breathtaking views of La Concha beach and lush gardens, this property is a rare gem for those seeking an elevated lifestyle.

#### Property Highlights:

**Spacious & Modern Layout:** 2 bedrooms, 2 bathrooms, a fully equipped kitchen, and a dedicated laundry room—all on one floor for seamless living.

**Private Garden:** Enjoy your own outdoor oasis with stunning views of La Concha mountain and the sea.

**Accessibility:** No stairs, ensuring easy access for all.

**Private Parking:** Exclusive parking within the secure urbanisation.

**Premium Community Amenities:** Relax or stay active with access to a swimming pool, tennis courts, paddle tennis court, and a state-of-the-art gym.

#### Why Choose Aloha?

Nestled in the prestigious Aloha Golf Valley, this location combines tranquillity with vibrant sophistication. Just minutes from Puerto Banús, you'll enjoy:

World-class golf at Aloha Golf Club, Las Brisas, and Los Naranjos.

A lively social scene with high-end restaurants, chic cafés, boutiques, and exclusive clubs.

Proximity to international schools and top-tier sports facilities, perfect for families.

Unrivalled views of the sea and La Concha mountain, blending luxury with natural beauty

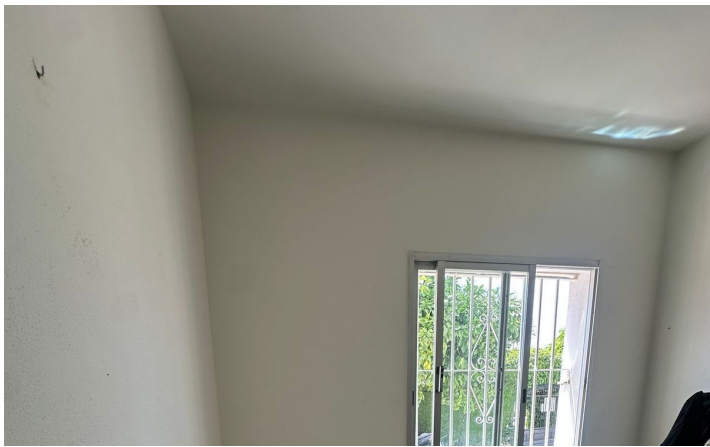
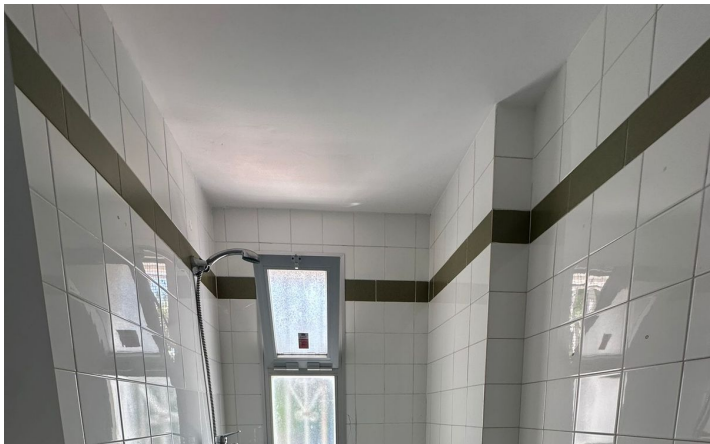
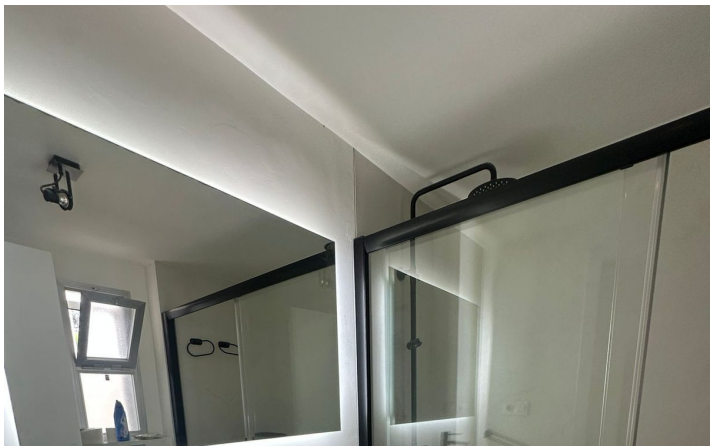
Whether you're seeking a serene retreat, a family-friendly home, or a smart investment, this apartment in Aloha offers it all. Don't miss the chance to own a slice of Marbella's finest lifestyle!

Contact us today to schedule a viewing and make this stunning apartment yours!

[View Property Online](#)



GALLERY





---

Vivi Real Estate | Calle Almendralejo de Jarales 5 Mijas Costa, 29640

Tel: +34 672 816 975

Email: [sales@vivi-realestate.com](mailto:sales@vivi-realestate.com) | Web: [www.vivi-realestate.com](http://www.vivi-realestate.com)