



Middle Floor Apartment in Atalaya

Price € 679,000

Bedrooms	4
Bathrooms	4
Build Size	185 m²
Terrace	56 m²
Plot Size	241 m²

SETTING

- ✓

Commercial Area
- ✓

Close To Shops
- ✓

Close To Schools
- ✓

Close To Forest
- ✓

Urbanisation

ORIENTATION

- ✓

South East
- ✓

South
- ✓

South West

CONDITION

- ✓

Good

POOL

- ✓

Communal

CLIMATE CONTROL

- ✓

Air Conditioning

VIEWS

- ✓

Sea
- ✓

Mountain
- ✓

Panoramic
- ✓

Garden
- ✓

Pool
- ✓

Forest

FEATURES

- ✓

Covered Terrace
- ✓

Near Transport
- ✓

Gym
- ✓

Utility Room
- ✓

Double Glazing
- ✓

Lift
- ✓

Private Terrace
- ✓

Sauna
- ✓

Access for people with reduced mobility
- ✓

24 Hour Reception
- ✓

Fitted Wardrobes
- ✓

WiFi
- ✓

Storage Room
- ✓

Marble Flooring
- ✓

Fiber Optic

FURNITURE

- ✓

Optional

KITCHEN

- ✓

Fully Fitted

GARDEN

- ✓

Communal

SECURITY

- ✓ Gated Complex
- ✓ 24 Hour Security
- ✓ Entry Phone
- ✓ Alarm System

PARKING

- ✓ Underground
- ✓ Street
- ✓ Garage
- ✓ Communal
- ✓ Open

UTILITIES

- ✓ Electricity
- ✓ Drinkable Water
- ✓ Gas

CATEGORY

- ✓ Resale
- ✓ With Planning Permission

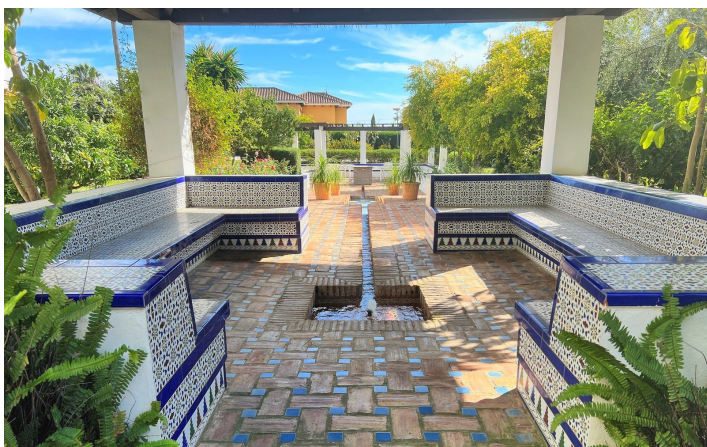
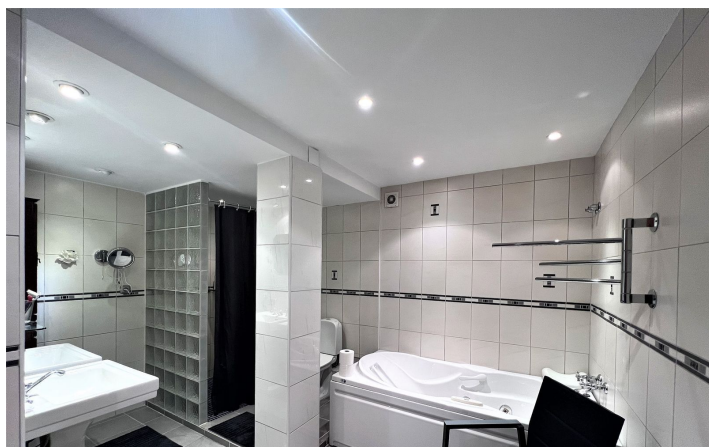
Fantastic 4 bedroom appartement with panoramic sea and mountain views,very private many facilities such as sauna gym 24 security and reception walking distance to all amenities i.e.shops and resataurants as well as close proximity to the beach.

[View Property Online](#)

GALLERY







Vivi Real Estate | Calle Almendralejo de Jarales 5 Mijas Costa, 29640
Tel: +34 672 816 975
Email: sales@vivi-realestate.com | Web: www.vivi-realestate.com