



Detached Villa in Benalmadena

Price **€ 8,000,000**

Bedrooms	8
Bathrooms	9
Build Size	1400 m²
Terrace	100 m²
Plot Size	6000 m²

SETTING

- ✓ Urbanisation

ORIENTATION

- ✓ South

CONDITION

- ✓ Recently Renovated

POOL

- ✓ Private
- ✓ Indoor
- ✓ Heated

CLIMATE CONTROL

- ✓ Air Conditioning
- ✓ Hot A/C
- ✓ Fireplace
- ✓ U/F Heating
- ✓ U/F/H Bathrooms

VIEWS

- ✓ Sea
- ✓ Garden

FEATURES

- ✓ Covered Terrace
- ✓ Fitted Wardrobes
- ✓ Private Terrace
- ✓ Satellite TV
- ✓ WiFi
- ✓ Gym
- ✓ Sauna
- ✓ Tennis Court
- ✓ Guest Apartment
- ✓ Guest House
- ✓ Storage Room
- ✓ Utility Room
- ✓ Ensuite Bathroom
- ✓ Wood Flooring
- ✓ Marble Flooring
- ✓ Jacuzzi
- ✓ Barbeque
- ✓ Double Glazing
- ✓ Domotics
- ✓ Staff Accommodation
- ✓ Fiber Optic

FURNITURE

- ✓ Part Furnished

KITCHEN

- ✓ Fully Fitted

GARDEN

- ✓ Private
- ✓ Landscaped

SECURITY

- ✓ Electric Blinds
- ✓ 24 Hour Security
- ✓ Entry Phone
- ✓ Safe
- ✓ Alarm System

PARKING

- ✓ Underground
- ✓ More Than One
- ✓ Garage
- ✓ Private
- ✓ Covered

UTILITIES

- ✓ Photovoltaic solar panels
- ✓ Solar water heating

CATEGORY

- ✓ Resale

One Level Villa by world-famous architect Frank Lloyd Wright *. Ideal as a family home for her, him and the children. The villa offers an incredible quality of life, plus a range of leisure, hobbies and sports all under one roof. Excellent location in a quiet residential area on a plot of 4500 m² in Rancho Domingo, Benalmadena.

The property consists of :

- a main house on one level (approx 650 sqm) with 4 bedrooms ensuite, guest toilet, kitchen, laundry and indoor pool (salt and heated).
- small house for nanny or employees with separate Entrance
- 2 guest apartments
- Gym
- Sound studio
- Tenniscourt

For Carlovers :

- air-conditioned garage for 16 cars for storage of Oldtimer
- second Garage for 2 Cars
- third Garage for Bikes
- outside parking spaces inside the property too easily park another 5 cars

Garden with different relaxing areas with fountains, outdoor salt water pool, barbeque, playgrounds

About Rancho Domingo :

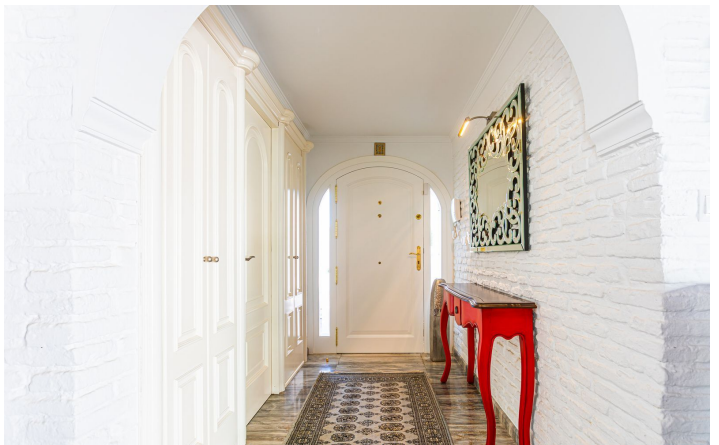
designed by the world famous architect Frank Lloyd Wright and his pupil Robert Mosher over the 1950's, is now included in the National Heritage. (Patrimonial Cultural y Histórico) In the height of Benalmadena is one of the more historic and established gated urbanisations on the Costa del Sol, where residents enjoy total privacy. International Schools, Hospital, Golf courses

International schools, golf courses, shopping, hospital and the international airport are all within a few minutes' drive.

[View Property Online](#)

GALLERY







Vivi Real Estate | Calle Almendralejo de Jarales 5 Mijas Costa, 29640

Tel: +34 672 816 975

Email: sales@vivi-realestate.com | Web: www.vivi-realestate.com