



Middle Floor Apartment in Atalaya

Price € 520,000

Bedrooms	2
Bathrooms	2
Build Size	124 m ²
Terrace	25 m ²
Plot Size	149 m ²

SETTING

- ✓ Commercial Area
- ✓ Close To Sea
- ✓ Close To Golf
- ✓ Close To Schools
- ✓ Close To Shops
- ✓ Urbanisation

ORIENTATION

- ✓ South West

CONDITION

- ✓ Good

POOL

- ✓ Communal
- ✓ Children`s Pool
- ✓ Indoor
- ✓ Heated

CLIMATE CONTROL

- ✓ Air Conditioning

VIEWS

- ✓ Sea
- ✓ Garden

FEATURES

- ✓ Covered Terrace
- ✓ Near Transport
- ✓ Gym
- ✓ Utility Room
- ✓ Jacuzzi
- ✓ Fiber Optic
- ✓ Lift
- ✓ Private Terrace
- ✓ Sauna
- ✓ Ensuite Bathroom
- ✓ Double Glazing
- ✓ Fitted Wardrobes
- ✓ WiFi
- ✓ Storage Room
- ✓ Access for people with reduced mobility
- ✓ 24 Hour Reception

FURNITURE

- ✓ Fully Furnished

KITCHEN

- ✓ Fully Fitted

GARDEN

- ✓ Communal

SECURITY

- ✓ Gated Complex
- ✓ 24 Hour Security
- ✓ Electric Blinds
- ✓ Entry Phone

PARKING

- ✓ Underground
- ✓ Private

CATEGORY

- ✓ Holiday Homes
 - ✓ Investment
 - ✓ Resale
-

We are delighted to present a rare opportunity within one of Estepona's most sought-after gated communities: Benatalaya, in Atalaya.

This 2-bedroom, 2-bathroom apartment is being offered for sale for the very first time since it was built. It is ideally positioned in one of the best blocks of the complex, ensuring total privacy and truly breathtaking panoramic views. From the terrace, you can enjoy sweeping vistas of the Mediterranean Sea, Africa, Gibraltar, Atalaya Golf, and the surrounding hills. With its west-facing orientation, the apartment benefits from abundant natural light throughout the afternoon and unforgettable sunsets.

- Property Features -

- 2 spacious bedrooms and 2 bathrooms
- 1 underground garage space and a storage room
- Located close to one of the outdoor swimming pools
- West-facing with golf, sea and sunset views

- Benatalaya Community -

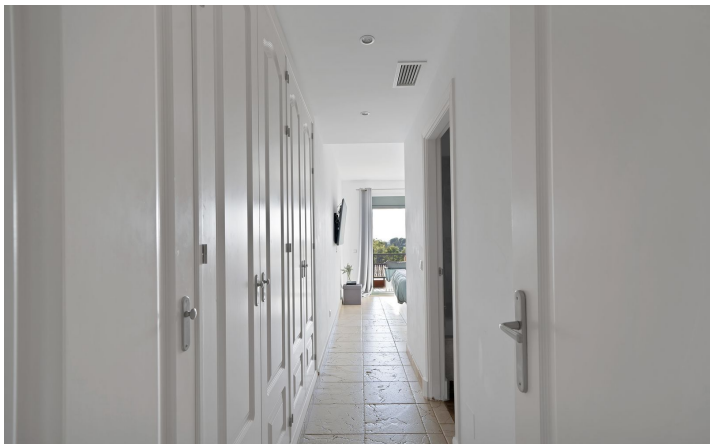
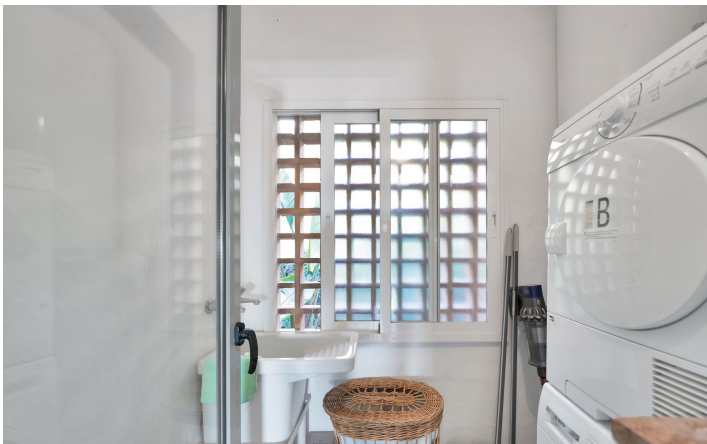
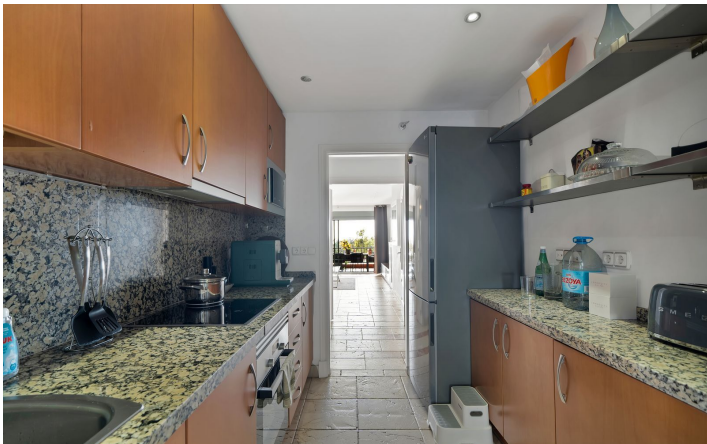
- Four outdoor swimming pools
- Luxury spa with heated indoor pool, sauna and gym
- Beautifully maintained landscaped gardens
- 24-hour security with excellent on-site service

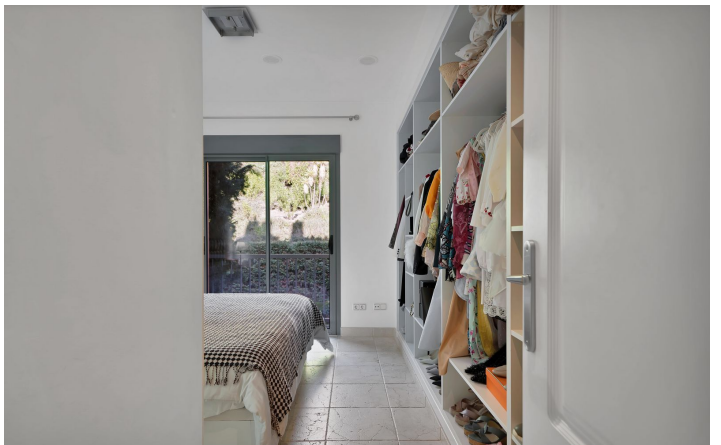
- Prime Location -

- Directly opposite Atalaya International School
- Within walking distance of a supermarket and the upcoming shopping centre with restaurants and services
- Short drive to Puerto Banús, Marbella and Estepona

[View Property Online](#)

GALLERY







ViVi Real Estate | Calle Almendralejo de Jarales 5 Mijas Costa, 29640

Tel: +34 672 816 975

Email: sales@vivi-realestate.com | Web: www.vivi-realestate.com