

Penthouse in Estepona

Price € 649,000

Bedrooms	3
Bathrooms	2
Build Size	135 m ²
Terrace	30 m ²
Plot Size	165 m ²

ORIENTATION

- ✓ South

CONDITION

- ✓ Excellent

POOL

- ✓ Communal

CLIMATE CONTROL

- ✓ Air Conditioning

VIEWS

- ✓ Sea
- ✓ Mountain
- ✓ Golf
- ✓ Panoramic

FEATURES

- ✓ Lift
- ✓ WiFi
- ✓ Gym
- ✓ Storage Room
- ✓ Utility Room
- ✓ Fiber Optic

FURNITURE

- ✓ Fully Furnished

KITCHEN

- ✓ Fully Fitted

GARDEN

- ✓ Communal

SECURITY

- ✓ Gated Complex

PARKING

- ✓ Underground

UTILITIES

- ✓ Electricity

CATEGORY

✓ Golf

✓ Investment

✓ Luxury

✓ Contemporary

Penthouse with Panoramic Sea & Golf Views - Estepona

Discover this spectacular south-facing penthouse in an exclusive frontline golf development in Estepona, offering abundant natural light and stunning panoramic views of the sea and golf course. Ideally located just 5 minutes from Alcazaba Lagoon and close to Estepona's new hospital, schools, restaurants, and supermarkets, this property combines luxury and convenience.

The spacious interior features a bright open-plan living and dining area, a modern fully equipped kitchen, and direct access to a large private terrace—perfect for enjoying the peaceful surroundings and breathtaking views. The master bedroom includes en-suite bathroom with walk-in shower. Two additional generous bedrooms with built-in wardrobes, a stylish bathroom with double sinks and walk-in shower, and a laundry area complete the layout.

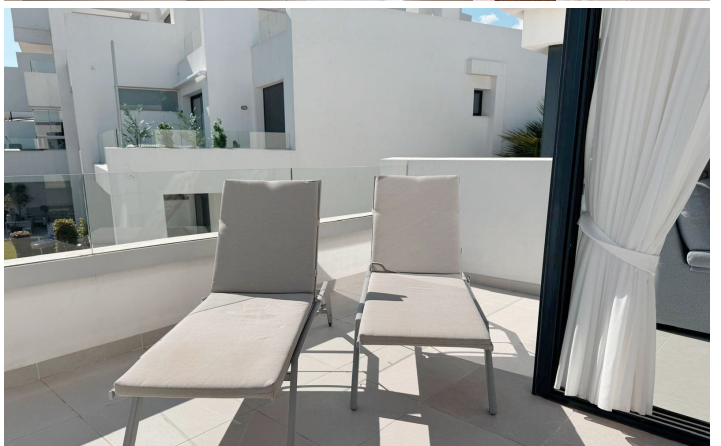
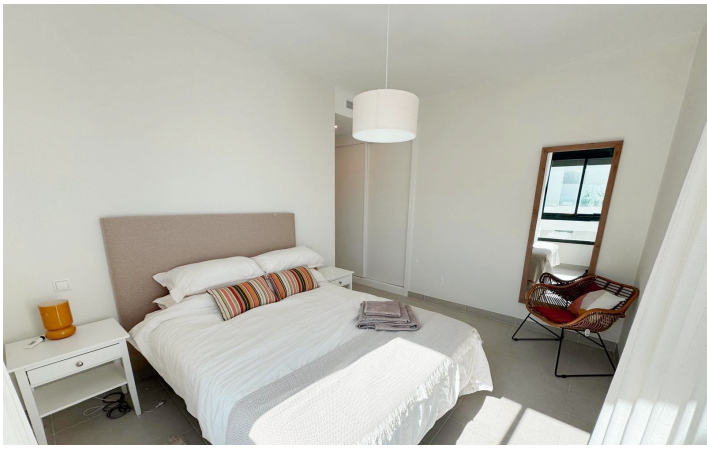
Additional features include a private underground parking space and a storage room. The well-maintained development offers excellent amenities such as a large swimming pool with sea and mountain views, a fully equipped gym, and 24-hour security.

This property is ideal for luxurious living or as a high-yield rental investment on the Costa del Sol.

[View Property Online](#)

GALLERY







Vivi Real Estate | Calle Almendralejo de Jarales 5 Mijas Costa, 29640

Tel: +34 672 816 975

Email: sales@vivi-realestate.com | Web: www.vivi-realestate.com