



Ground Floor Apartment in Nueva Andalucía

Price € 685,000

Bedrooms	2
Bathrooms	2
Build Size	128 m ²
Terrace	93 m ²
Plot Size	221 m ²

SETTING

- ✓ Commercial Area
- ✓ Close To Golf
- ✓ Close To Shops
- ✓ Urbanisation

ORIENTATION

- ✓ South East

CONDITION

- ✓ Good

POOL

- ✓ Communal

CLIMATE CONTROL

- ✓ Air Conditioning

VIEWS

- ✓ Mountain
- ✓ Pool

FEATURES

- ✓ Private Terrace
- ✓ Gym
- ✓ Marble Flooring

FURNITURE

- ✓ Not Furnished

KITCHEN

- ✓ Fully Fitted

GARDEN

- ✓ Communal

SECURITY

- ✓ Gated Complex

PARKING

- ✓ Underground

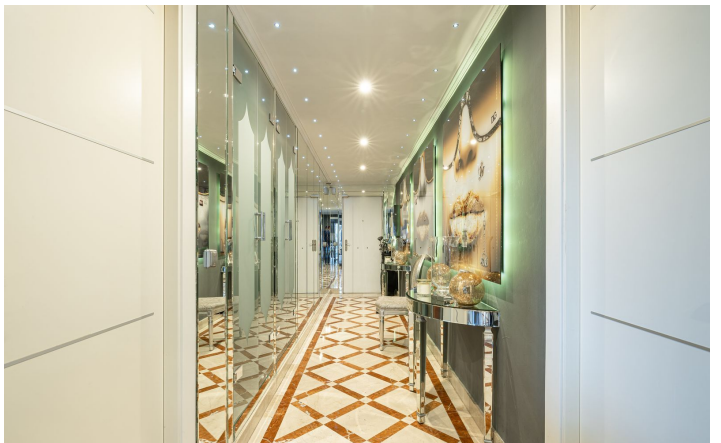
Elegant 2-Bedroom Apartment Within Walking Distance of Iconic Puerto Banús - Marbella

This stunning and exceptionally spacious ground-floor apartment boasts breathtaking views of La Concha mountain and features an expansive 93m² wraparound terrace, perfect for outdoor dining and entertaining.

Designed for comfort and style, the property offers two generously sized en-suite bedrooms and a bright living space that frames the beauty of La Concha. Additional highlights include underground parking and an unbeatable location—just minutes from Marbella Arena, Centro Plaza, and renowned dining spots like La Sala and Breathe. An outstanding opportunity to own a fabulous apartment in one of Marbella's most sought-after areas!

[View Property Online](#)

GALLERY







Vivi Real Estate | Calle Almendralejo de Jarales 5 Mijas Costa, 29640

Tel: +34 672 816 975

Email: sales@vivi-realestate.com | Web: www.vivi-realestate.com