



# Residential Plot in Benahavís

Price € 750,000

Plot Size

2275 m<sup>2</sup>

## SETTING

- ✓ Close To Golf
- ✓ Close To Forest
- ✓ Urbanisation

## ORIENTATION

- ✓ South

## VIEWS

- ✓ Sea
- ✓ Mountain
- ✓ Country
- ✓ Panoramic
- ✓ Forest

## SECURITY

- ✓ Gated Complex
- ✓ 24 Hour Security

## UTILITIES

- ✓ Electricity
- ✓ Drinkable Water
- ✓ Telephone

## CATEGORY

- ✓ Investment
- ✓ Resale

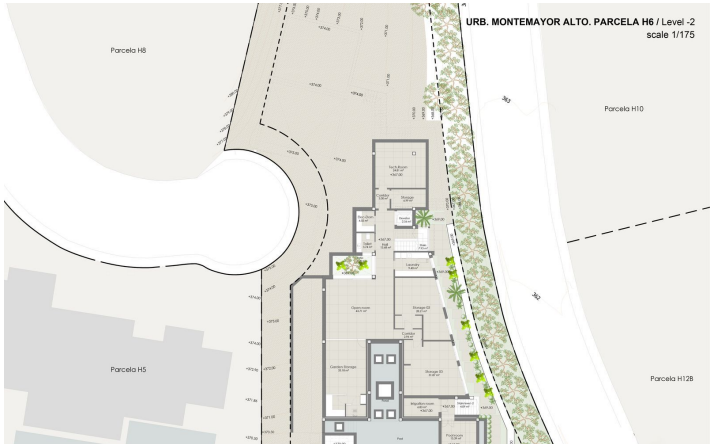
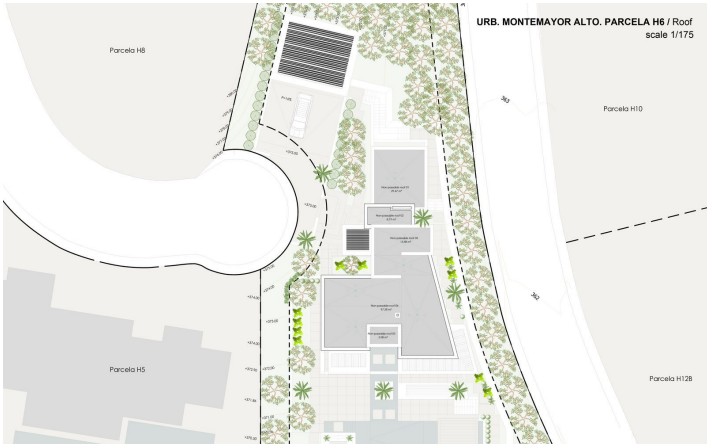
Magnificent 2,275 m<sup>2</sup> plot in the prestigious Monte Mayor urbanisation, Benahavís, set in an elevated and privileged position that guarantees spectacular open views of the Mediterranean Sea and the mountains. Surrounded by nature, lush woodland and an exceptionally peaceful green environment, it represents an outstanding opportunity to develop a high-end detached villa with a south-facing orientation, spacious terraces and extensive landscaped gardens. An exclusive setting for those seeking privacy, scenic beauty and a sense of peace that is hard to find, where natural light and the surroundings make every corner truly special.

[View Property Online](#)

# GALLERY







Vivi Real Estate | Calle Almendralejo de Jarales 5 Mijas Costa, 29640

Tel: +34 672 816 975

Email: [sales@vivi-realestate.com](mailto:sales@vivi-realestate.com) | Web: [www.vivi-realestate.com](http://www.vivi-realestate.com)