



Residential Plot in Benahavís

Price € 795,000

Build Size **314 m²**

Plot Size **827 m²**

SETTING

- ✓ Close To Golf

ORIENTATION

- ✓ South West

POOL

- ✓ Private

CLIMATE CONTROL

- ✓ Air Conditioning

VIEWS

- ✓ Mountain
- ✓ Panoramic

FEATURES

- ✓ Lift
- ✓ Private Terrace
- ✓ Solarium
- ✓ Utility Room

FURNITURE

- ✓ Not Furnished

GARDEN

- ✓ Private

SECURITY

- ✓ Safe

PARKING

- ✓ Private

CATEGORY

- ✓ Investment
 - ✓ Luxury
 - ✓ Off Plan
 - ✓ With Planning Permission
 - ✓ Contemporary
-

The plot is situated in a gated enclave of luxury residences situated off the Ronda Road a short distance from San Pedro Alcantara and all the facilities of the Marbella area.

An exciting villa project has been penned by renowned local Architect Cesar de Leyva which has achieved the goal of making the best of the views whilst providing a comfortable home in the modern idiom with open concept living and

up to 4 or 5 bedrooms, all with en suite bathrooms. The goal was to deliver a villa that would be perfect as a second home and therefore there are views and lots of terrace spaces to enjoy rather than extensive gardens to maintain. One of the main features has to be the elevated infinity swimming pool which celebrates the views and will certainly be a talking point for family and friends. The design includes an elevator which will make all areas of the house including the solarium accessible for people of all abilities.

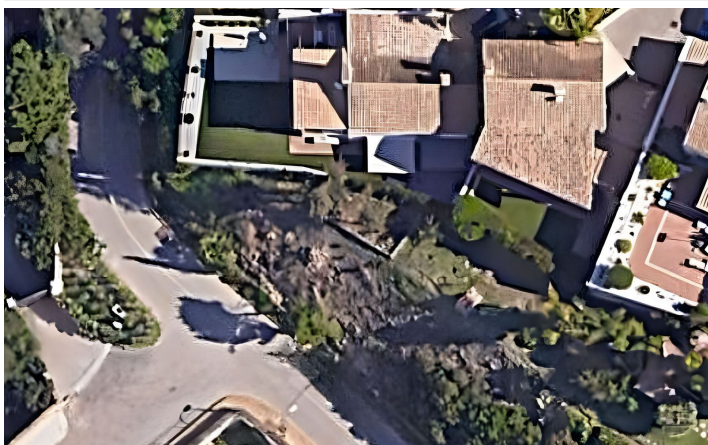
The project maximises what can be built on the plot although obviously the buyer will be able to decide whether they need the maximum or something more modest.

This is an opportunity to construct an amazing home in a brilliant location. For more details and floor plans please just send us a message.

Plot 513 m2 Build of Project 314 m2

[View Property Online](#)

GALLERY



Vivi Real Estate | Calle Almendralejo de Jarales 5 Mijas Costa, 29640

Tel: +34 672 816 975

Email: sales@vivi-realestate.com | Web: www.vivi-realestate.com