



# Detached Villa in Torremuelle

Price € 1,150,000

Bedrooms	4
Bathrooms	5
Build Size	358 m <sup>2</sup>
Plot Size	358 m <sup>2</sup>

## SETTING

- ✓ Village
- ✓ Close To Town
- ✓ Close To Shops
- ✓ Close To Schools
- ✓ Close To Sea
- ✓ Urbanisation

## ORIENTATION

- ✓ South

## CONDITION

- ✓ Excellent

## POOL

- ✓ Communal

## CLIMATE CONTROL

- ✓ Air Conditioning

## VIEWS

- ✓ Sea
- ✓ Panoramic

## FEATURES

- ✓ Covered Terrace
- ✓ Near Transport
- ✓ Storage Room
- ✓ Double Glazing
- ✓ Lift
- ✓ Private Terrace
- ✓ Utility Room
- ✓ Fitted Wardrobes
- ✓ Gym
- ✓ Ensuite Bathroom

## KITCHEN

- ✓ Fully Fitted

## GARDEN

- ✓ Communal

## SECURITY

- ✓ Alarm System

## PARKING

- ✓ Garage
- ✓ Private

## UTILITIES

- ✓ Photovoltaic solar panels

## CATEGORY

✓ Holiday Homes

✓ Investment

✓ Luxury

✓ Resale

---

Modern villa with spectacular panoramic views of the Mediterranean, located in one of the most exclusive areas of Benalmádena, next to the Casablanca natural park. In a peaceful setting close to the village, this south-facing, bright property offers spacious terraces, large windows, and a sophisticated design that seamlessly blends indoor and outdoor living. It also features installed solar panels for greater energy efficiency.

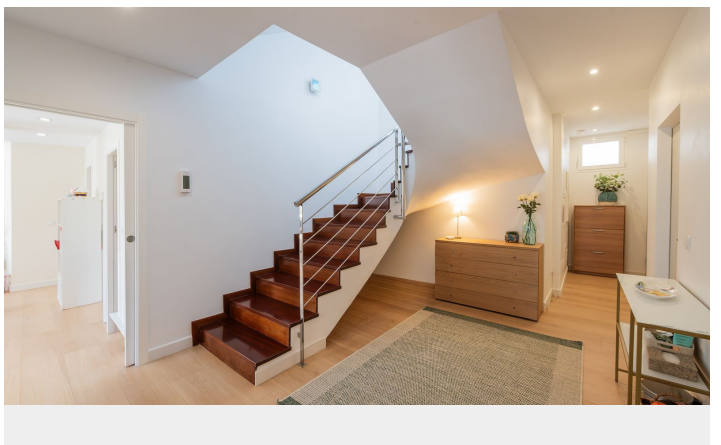
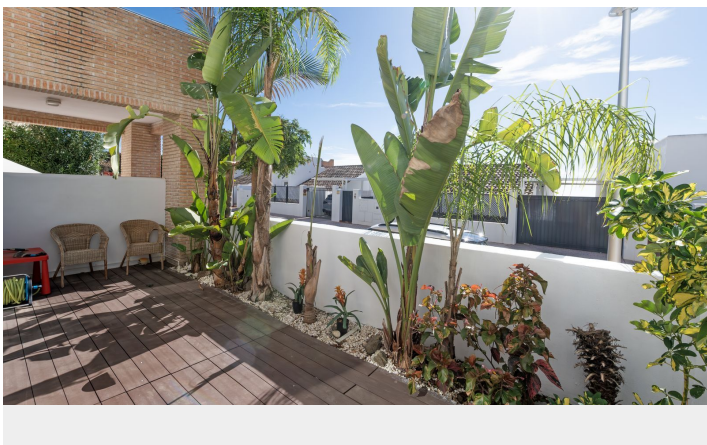
Distributed across three floors connected by a private lift, it includes four en-suite bedrooms, a guest toilet, a fully equipped kitchen, a laundry room, and an additional 40 m<sup>2</sup> living area on the garden level.

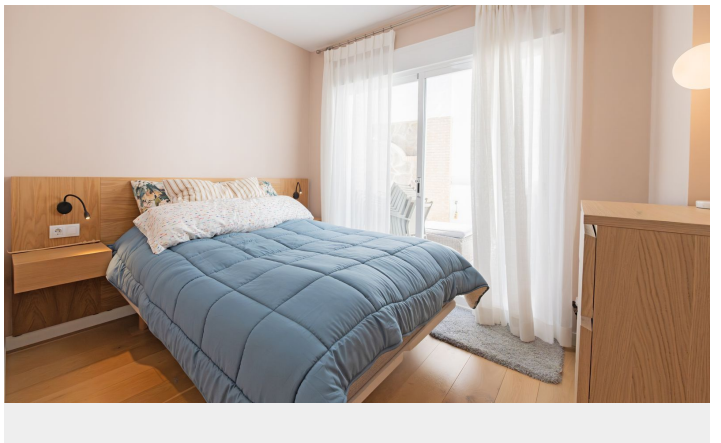
The development offers an elegant social club with a swimming pool, gym, and privileged views of the sea and the bay of Fuengirola.

Excellent location, just 800 meters from the Torremuelle train station and close to all amenities.

[View Property Online](#)

# GALLERY







ViVi Real Estate | Calle Almendralejo de Jarales 5 Mijas Costa, 29640

Tel: +34 672 816 975

Email: [sales@vivi-realestate.com](mailto:sales@vivi-realestate.com) | Web: [www.vivi-realestate.com](http://www.vivi-realestate.com)