

# Residential Plot in Benahavís

Price **€ 1,200,000**

Build Size	<b>1000 m<sup>2</sup></b>
Plot Size	<b>6185 m<sup>2</sup></b>

BEST PRICED LAND IN THE MARKET - 222 €/Sqm - Plot in Puerto del Almendro, Benahavis - Marbella

Flat plot of 5.186 sqm. - Situated in an ideal position for people who want peace and tranquility - Panoramic views over the surrounding landscape - Partial sea view as well - The commercial centre of Monte Halcones is just around the corner and offers basic amenities such as supermarket, pharmacy, restaurants etc. - Further amenities is found in San Pedro and Puerto Banus, only 10 min. away.

The urbanization has barriers and camera at the entrance as well as a tennis court available to residents.

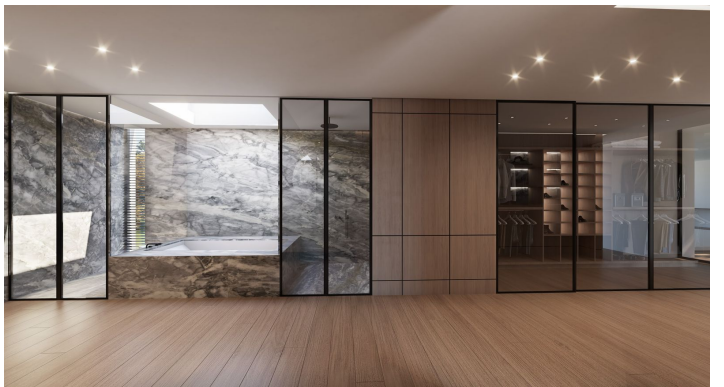
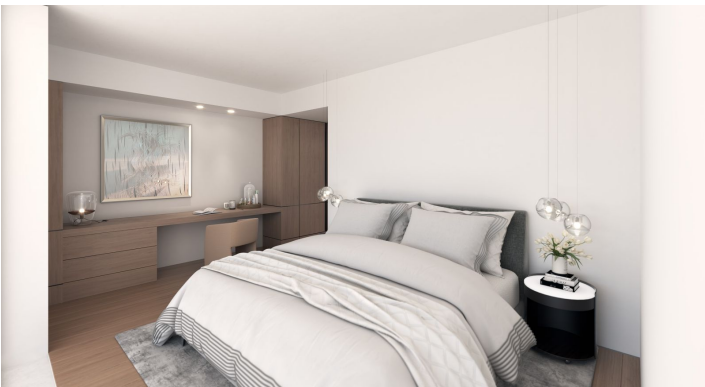
For construction of villa - Edif. 20 pct. min. plot 3.000 sqm. - Very tranquil and idyllic location - open views and very private - Sea views from second floor.

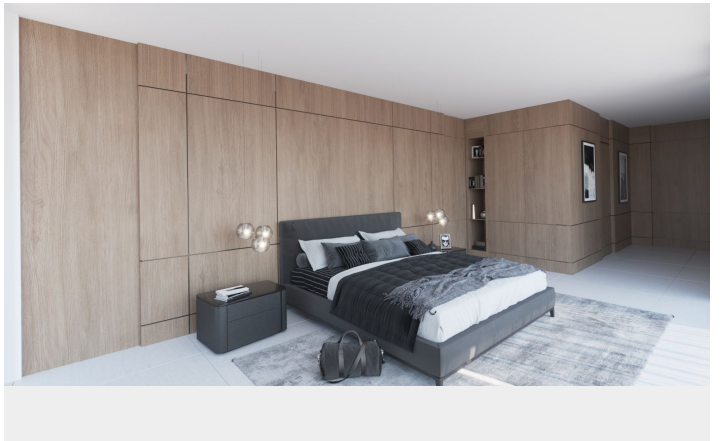
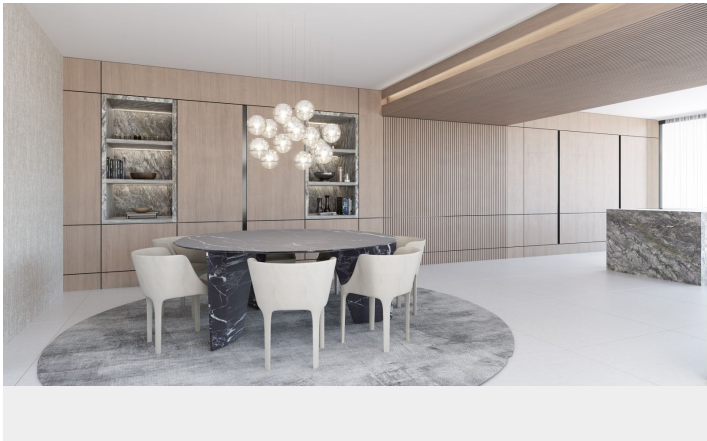
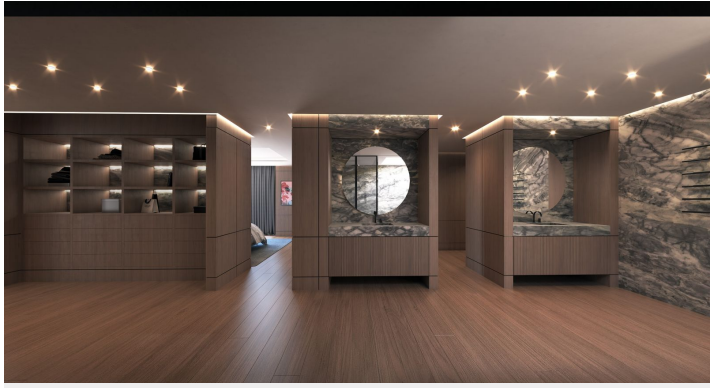
Approved project available - see renders. We have the neighboring plot of 4.300 sqm. for sale as well (ref. No. R5166994), hence total of more than 9.300 sqm. is available - Thus allowing for three villas 600 sqm. plus basement (approx. 800 sqm. in total).

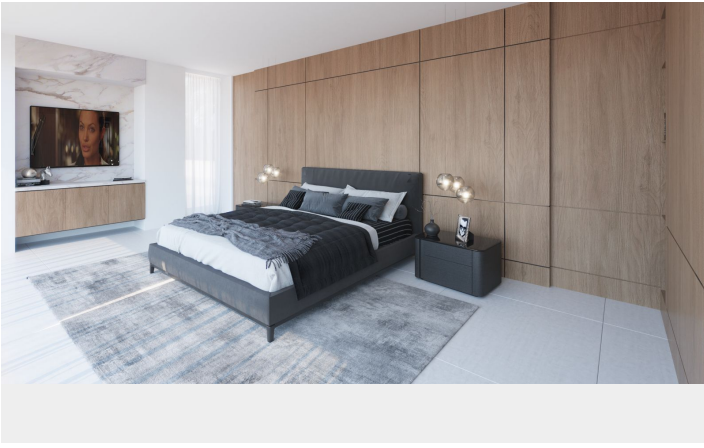
Arguably one of the best opportunities for a plot of land for the construction of a villa - and more so as it is in a gated community in Benahavis - Doesn't get much better.

[View Property Online](#)

# GALLERY







---

Vivi Real Estate | Calle Almendralejo de Jarales 5 Mijas Costa, 29640

Tel: +34 672 816 975

Email: [sales@vivi-realestate.com](mailto:sales@vivi-realestate.com) | Web: [www.vivi-realestate.com](http://www.vivi-realestate.com)