

Reference: R4868668



WWW.VIVI-REALESTATE.COM
WWW.VIVI-HOMES.COM





Penthouse in Puerto Banús

Price € 1,200,000

Bedrooms	2
Bathrooms	2
Build Size	120 m ²
Terrace	60 m ²
Plot Size	180 m ²

SETTING

- ✓ Commercial Area
- ✓ Close To Sea
- ✓ Urbanisation
- ✓ Port
- ✓ Close To Schools
- ✓ Close To Shops
- ✓ Close To Marina

ORIENTATION

- ✓ North
- ✓ West
- ✓ North West

CONDITION

- ✓ Excellent
- ✓ Recently Renovated

POOL

- ✓ Communal

CLIMATE CONTROL

- ✓ Air Conditioning
- ✓ Fireplace

VIEWS

- ✓ Mountain
- ✓ Street
- ✓ Panoramic
- ✓ Urban

FEATURES

- ✓ Lift
- ✓ Private Terrace
- ✓ Storage Room
- ✓ 24 Hour Reception
- ✓ Fitted Wardrobes
- ✓ Solarium
- ✓ Ensuite Bathroom
- ✓ Near Transport
- ✓ Paddle Tennis
- ✓ Barbeque

FURNITURE

- ✓ Fully Furnished

KITCHEN

- ✓ Fully Fitted

GARDEN

- ✓ Communal

SECURITY

- ✓ Gated Complex

PARKING

✓ Underground

Spectacular Renovated Penthouse in Puerto Banús. Due to its location in Medina Garden, this penthouse is an excellent investment for use as a vacation rental or as a second home.

This penthouse has been exquisitely renovated with numerous details. It consists of a spacious living room with an open kitchen to maximize space and create a sense of openness. There is a hallway leading to the two bedrooms, one of which is the master bedroom with an en-suite bathroom and a dressing area. There is also a second full bathroom.

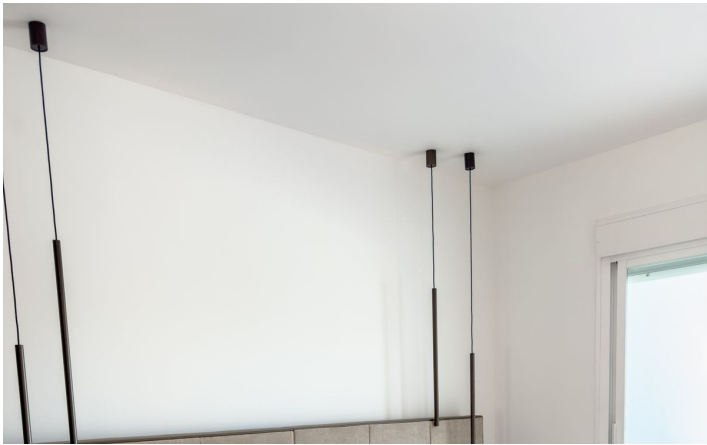
Both bedrooms and the living room have access to a large 60-square-meter terrace, offering a great view of La Concha, the main mountain in Marbella. The terrace features several distinct areas to fully enjoy the magnificent weather of the coast. Notably, there is a square-shaped area, perfect for placing sofas to create the ideal chill-out zone.

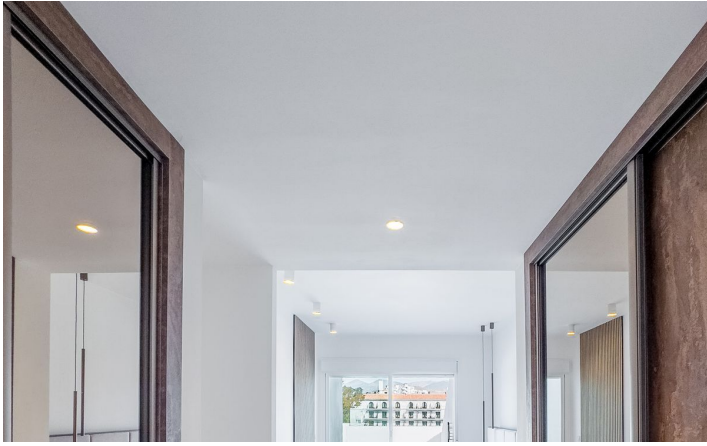
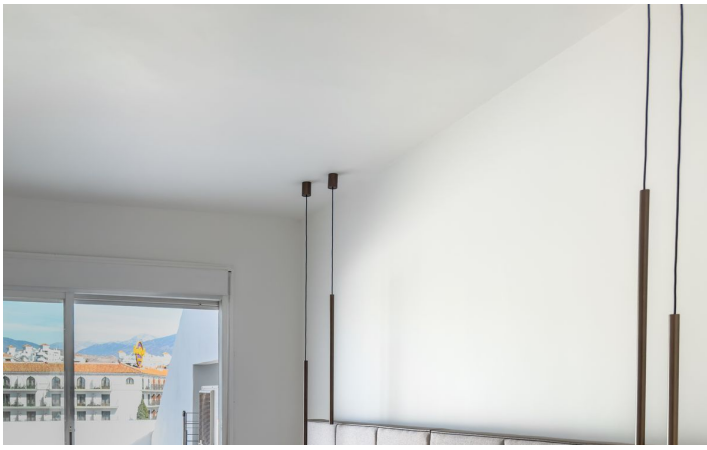
The complex offers 24-hour security, a swimming pool, a paddle tennis court, and well-maintained gardens. Additionally, the property includes an underground parking space and a storage room.

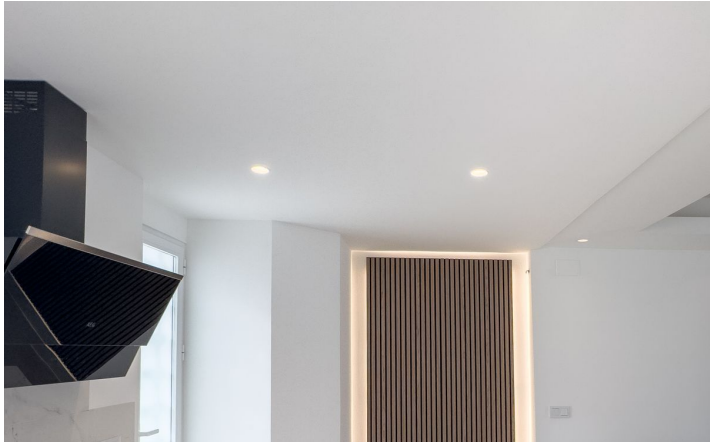
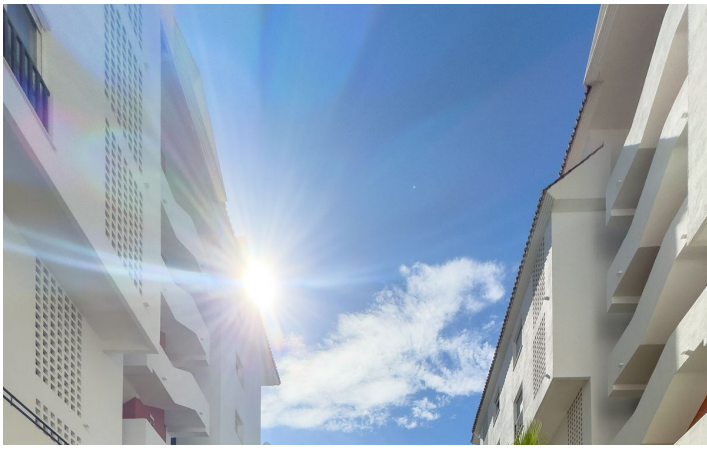
The unbeatable location allows you to walk to the beach in 2 minutes or reach the center of Puerto Banús in 5 minutes, all on foot.

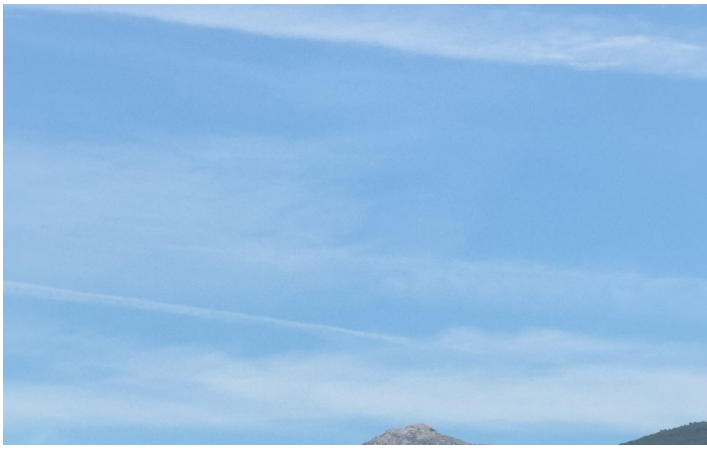
[View Property Online](#)

GALLERY









Vivi Real Estate | Calle Almendralejo de Jarales 5 Mijas Costa, 29640

Tel: +34 672 816 975

Email: sales@vivi-realestate.com | Web: www.vivi-realestate.com