



# Detached Villa in Los Almendros

Price € 1,350,000

Bedrooms	2
Bathrooms	2
Build Size	133 m <sup>2</sup>
Terrace	51 m <sup>2</sup>
Plot Size	6026 m <sup>2</sup>

## SETTING

- ✓ Close To Golf
- ✓ Close To Forest
- ✓ Urbanisation

## ORIENTATION

- ✓ South

## CONDITION

- ✓ Fair
- ✓ Renovation Required
- ✓ Restoration Required

## CLIMATE CONTROL

- ✓ Fireplace

## VIEWS

- ✓ Mountain
- ✓ Garden

## FEATURES

- ✓ Covered Terrace
- ✓ Private Terrace
- ✓ Wood Flooring

## KITCHEN

- ✓ Fully Fitted

## GARDEN

- ✓ Private

## SECURITY

- ✓ Gated Complex

## PARKING

- ✓ More Than One
- ✓ Private

## UTILITIES

- ✓ Electricity
- ✓ Drinkable Water

## CATEGORY

- ✓ Investment
- ✓ Resale

---

Luxury Renovation Project in Puerto del Almendro, Benahavís. Build your dream villa in the heart of one of the Costa del Sol's most exclusive green oasis.

Discover Puerto del Almendro, an ultra-private gated community nestled in the lush, rolling hills of Benahavís, just 10 minutes from Puerto Banús and 15 minutes from Marbella, with world-class golf courses, Michelin-starred restaurants and elite international schools nearby and more...

With unrestricted renovation potential, this is one of the rarest investment opportunities in southern Spain — perfect for discerning buyers, luxury developers and eco-conscious investors seeking to create a custom-built, modern villa with panoramic views, smart home technology and sustainable design.

Property Features:

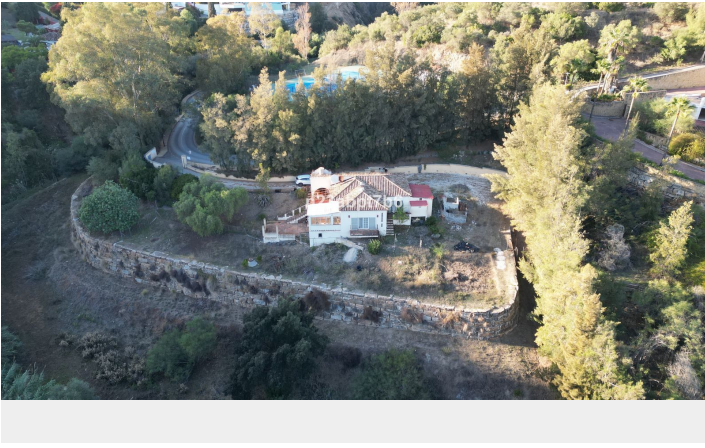
- \* Expansion potential: add more M2 of built area (subject to local regulations) to create a luxury 4-6-bedroom villa with your own taste and style.
- \* A long retention wall in place, that will save a large extra cost of build it.
- \* Prime location, zero competition – Puerto del Almendro is one of the least saturated and most exclusive gated communities in Benahavís, offering unparalleled privacy, security and prestige compared to mass-market developments. Walk to nature and drive to luxury: enjoy the proximity to many world famous golf courses, Puerto Banús and Marbella's Golden beaches.
- \* High ROI potential: Benahavís has seen a 42% increase in property values since 2020.
- \* Malaga International airport and Gibraltar airport are about 50 minutes drive.

Puerto del Almendro is a gated community located in one of the greenest and most tranquil areas of Benahavís, on the Ronda road.

[View Property Online](#)

# GALLERY





---

ViVi Real Estate | Calle Almendralejo de Jarales 5 Mijas Costa, 29640

Tel: +34 672 816 975

Email: [sales@vivi-realestate.com](mailto:sales@vivi-realestate.com) | Web: [www.vivi-realestate.com](http://www.vivi-realestate.com)