

# Residential Plot in Estepona

Price **€ 2,100,000**

Plot Size

**5095 m<sup>2</sup>**

## VIEWS

- ✓ Sea
- ✓ Mountain

Premium urban plots of over 5,000 m<sup>2</sup>, with 180° panoramic views of the Mediterranean - La Panera, Selwo (Estepona, New Golden Mile)

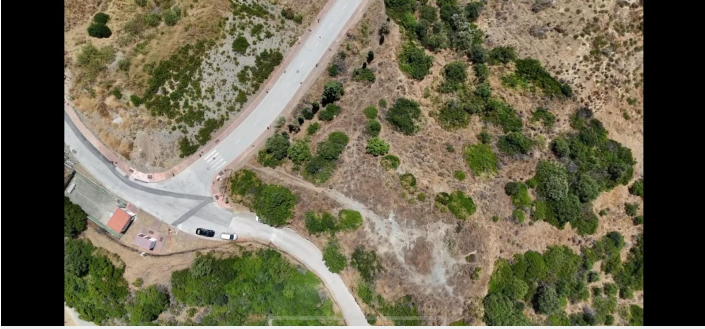
Discover the most exclusive plots on the Costa del Sol: more than half a hectare of elevated land, facing south-southwest, within the established luxury development of La Panera. From every point on the property, uninterrupted sea views stretch from Gibraltar to the African coast—a blue backdrop that turns every sunrise and sunset into a private spectacle. The setting combines the tranquility of nature with proximity to all amenities: just a 5-minute drive to the beaches and promenade of Estepona, 10 minutes to the historic center and marina, and 15 minutes to Puerto Banús.

Imagine designing your dream mansion on over 5,000 m<sup>2</sup> of sun-drenched land overlooking the most coveted coastline of the Costa del Sol. In La Panera, a boutique development of only 27 villas, these two unique plots offer absolute privacy, top-tier infrastructure, and building allowances that enable the creation of a contemporary residence of >1,000 m<sup>2</sup> with cascading gardens and an infinity pool overlooking the Mediterranean. Just five minutes from the beach and surrounded by golf courses, gourmet restaurants, and international schools, the location combines the glamour of Marbella with the charm of Estepona. With neighboring villas valued at over five million euros, the investment is secure: build today and enjoy a five-star lifestyle—or capitalize on the highest segment of the market.

Sold together.

[View Property Online](#)

## GALLERY



Vivi Real Estate | Calle Almendralejo de Jarales 5 Mijas Costa, 29640

Tel: +34 672 816 975

Email: [sales@vivi-realestate.com](mailto:sales@vivi-realestate.com) | Web: [www.vivi-realestate.com](http://www.vivi-realestate.com)