



# Penthouse in Marbella

Price **€ 2,450,000**

Bedrooms	4
Bathrooms	4
Build Size	218 m <sup>2</sup>
Terrace	103 - 127 m <sup>2</sup>
Plot Size	218 m <sup>2</sup>

## SETTING

- ✓ Close To Golf
- ✓ Close To Town
- ✓ Close To Shops
- ✓ Close To Schools
- ✓ Close To Sea

## ORIENTATION

- ✓ South West

## CONDITION

- ✓ New Construction

## POOL

- ✓ Communal
- ✓ Children`s Pool
- ✓ Indoor
- ✓ Heated

## VIEWS

- ✓ Sea
- ✓ Mountain
- ✓ Panoramic

## FEATURES

- ✓ Fitted Wardrobes
- ✓ Gym
- ✓ Utility Room
- ✓ Private Terrace
- ✓ Sauna
- ✓ Ensuite Bathroom
- ✓ Solarium
- ✓ Storage Room
- ✓ Jacuzzi

## KITCHEN

- ✓ Kitchen-Lounge

## GARDEN

- ✓ Communal
- ✓ Landscaped

## SECURITY

- ✓ Gated Complex
- ✓ Entry Phone
- ✓ 24 Hour Security

## PARKING

- ✓ Garage
- ✓ Communal

## CATEGORY

- ✓ New Development

---

New Development: Prices from €2,450,000 to €2,450,000. [Bedrooms: 4] [Bathrooms: 4] [Built size: 218m2].

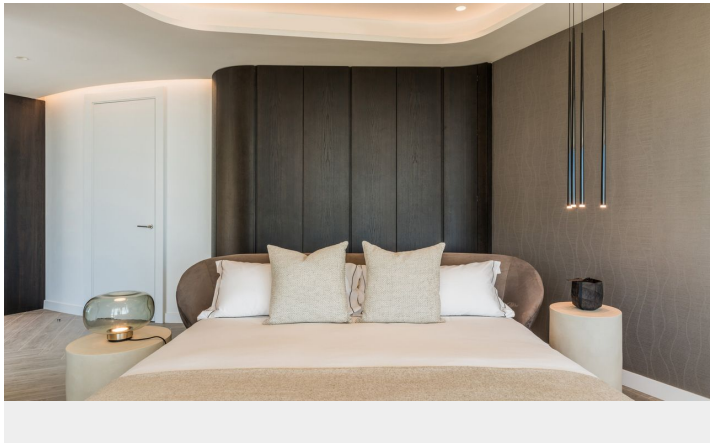
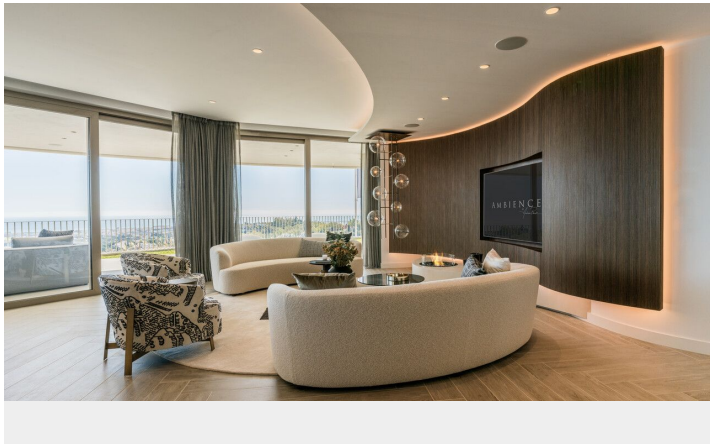
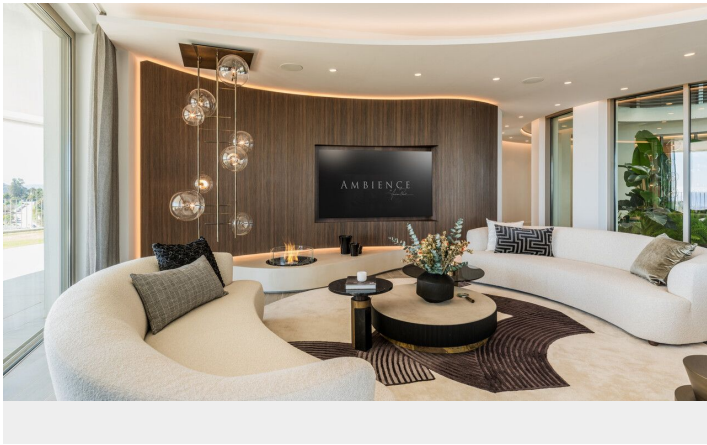
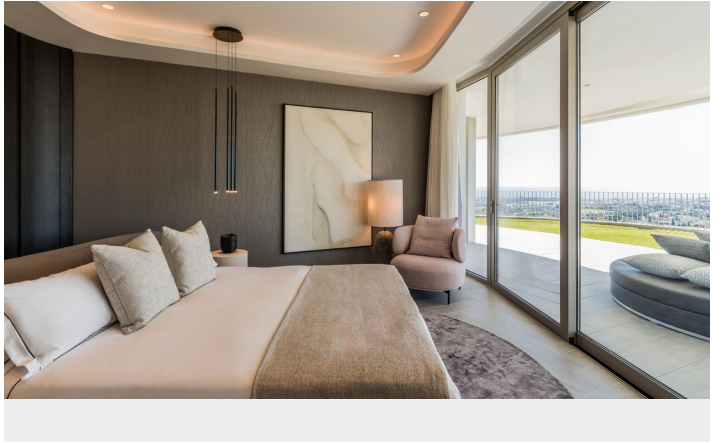
The prestigious residential complex is located near the charming village of Benahavís, designed for those who seek outstanding luxury and comfort.

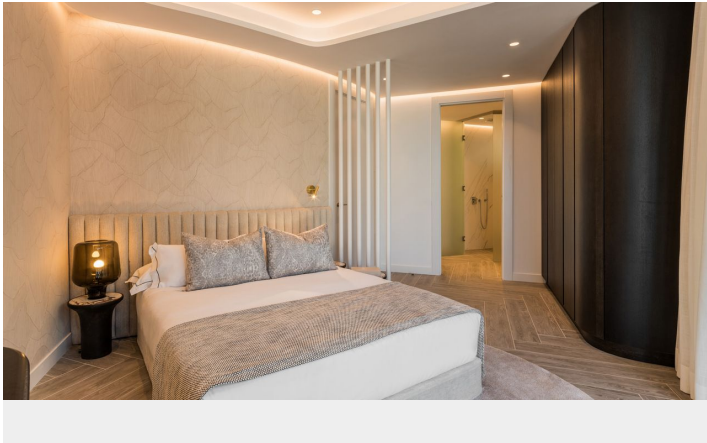
The complex features exquisitely created 2, 3, and 4-bedroom apartments as well as expansive penthouses, all offering breathtaking views of the Mediterranean Sea towards Gibraltar and the coasts of África.

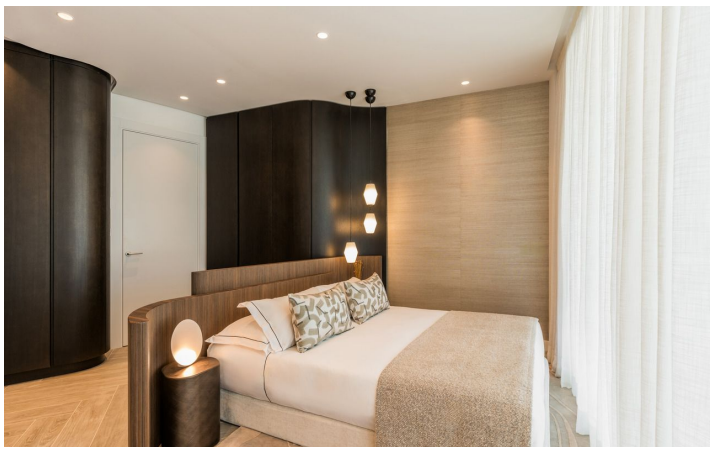
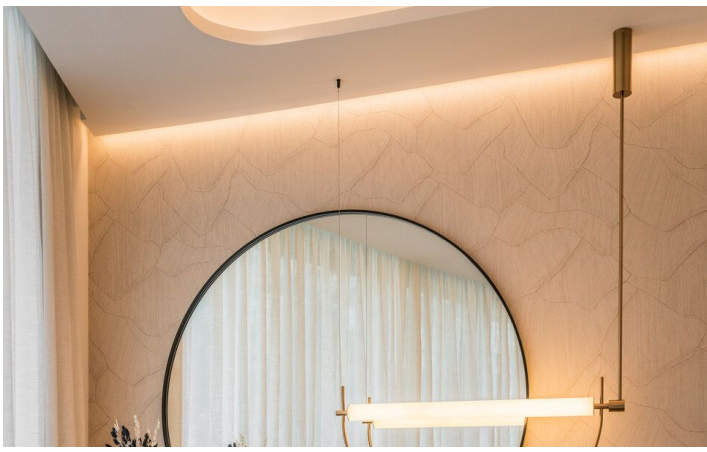
Situated close to the renowned La Quinta Golf Club, the complex offers residents easy access to world-class golfing facilities. The offered amenities are unique, providing a salt water pool with jacuzzi, outdoor garden gym with yoga area, Petanca, chillout area with pit fire and a conference center. The 24-hour security ensures a safe and private living environment.

[View Property Online](#)

# GALLERY







Vivi Real Estate | Calle Almendralejo de Jarales 5 Mijas Costa, 29640

Tel: +34 672 816 975

Email: [sales@vivi-realestate.com](mailto:sales@vivi-realestate.com) | Web: [www.vivi-realestate.com](http://www.vivi-realestate.com)