

Penthouse in La Mairena

Price € 679,000

Bedrooms	3
Bathrooms	2
Build Size	114 m ²
Terrace	114 m ²
Plot Size	228 m ²

SETTING

- ✓ Frontline Golf
- ✓ Close To Schools
- ✓ Mountain Pueblo
- ✓ Close To Forest
- ✓ Close To Golf
- ✓ Urbanisation

ORIENTATION

- ✓ South East
- ✓ South
- ✓ South West

CONDITION

- ✓ Excellent
- ✓ New Construction

POOL

- ✓ Communal

CLIMATE CONTROL

- ✓ Air Conditioning

VIEWS

- ✓ Sea
- ✓ Urban
- ✓ Mountain
- ✓ Forest
- ✓ Panoramic

FEATURES

- ✓ Covered Terrace
- ✓ Private Terrace
- ✓ Double Glazing
- ✓ Lift
- ✓ Ensuite Bathroom
- ✓ Fitted Wardrobes
- ✓ Access for people with reduced mobility

FURNITURE

- ✓ Fully Furnished

KITCHEN

- ✓ Fully Fitted

GARDEN

- ✓ Communal

SECURITY

- ✓ Gated Complex
- ✓ Entry Phone
- ✓ Alarm System

PARKING

✓ Open

✓ Communal

✓ Private

UTILITIES

✓ Electricity

CATEGORY

✓ Resale

Panoramic Sea-View Penthouse on One Level – Seamless Indoor-Outdoor Living

This modern one-level penthouse enjoys breathtaking panoramic sea views and is located within a protected UNESCO biosphere area, ensuring a unique natural setting, preserved surroundings and a sense of tranquility that will remain untouched over time — a truly special environment on the Costa del Sol.

Designed for relaxed Mediterranean living, the home offers a strong connection between indoor and outdoor spaces. While the layout is both comfortable and functional, the property truly stands out for its beautifully maintained interior, presented in immaculate, showhome condition throughout.

The true highlight, however, is the expansive L-shaped terrace, which is as generous as the living area itself and invites you to enjoy life outdoors all year round. The current owners have enhanced part of the terrace with high-quality glass curtains, creating a versatile additional living space that can be enjoyed in all seasons — ideal for cooler evenings while still making the most of the views.

The property offers three bedrooms and two bathrooms, including a master bedroom with en-suite. The open-plan living and kitchen area creates a bright and practical living space, with direct access to the terrace from both the living room and the kitchen — ideal for everyday living, alfresco dining and enjoying the views.

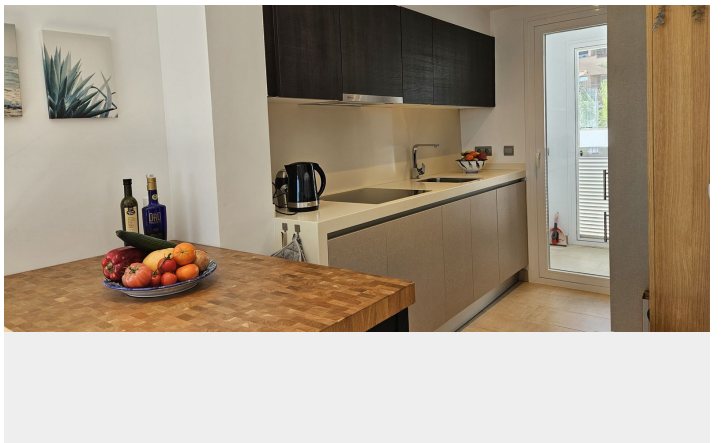
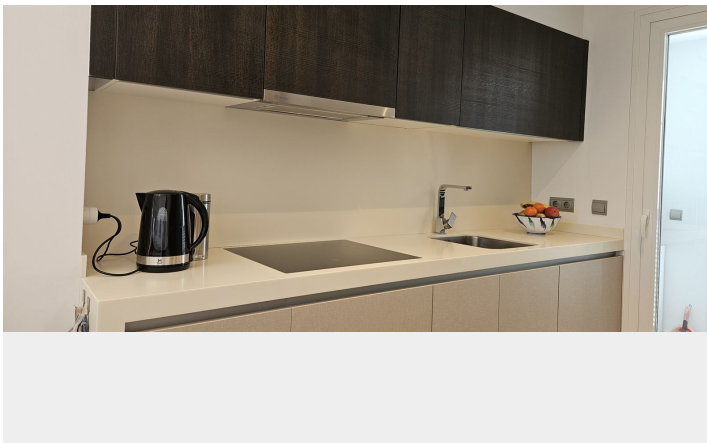
As part of the community, owners benefit from full access to the El Soto Clubhouse facilities, including a golf course, tennis & padle court and a gym — ideal for enjoying an active lifestyle. The clubhouse also features a popular restaurant, available to residents on a pay-per-use basis.

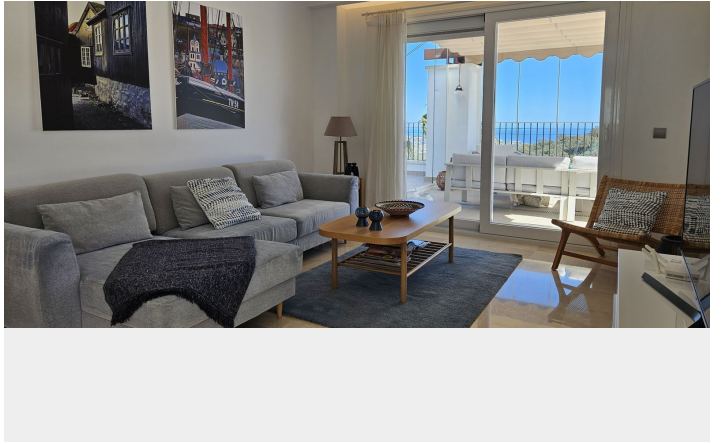
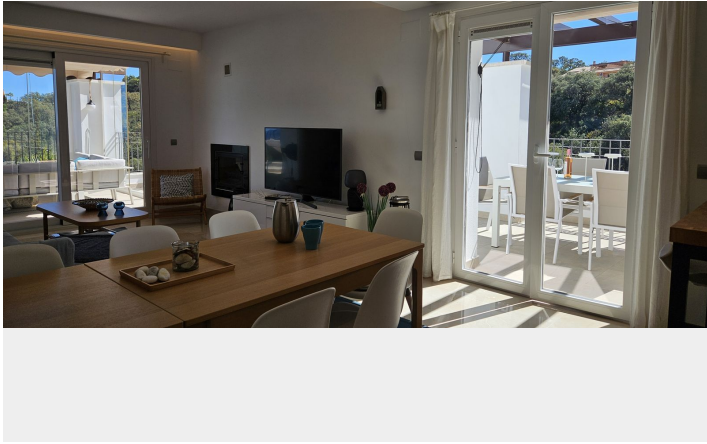
A lovely penthouse with panoramic sea views, exceptional outdoor areas, pristine interiors and access to resort-style facilities — perfect as a holiday home, permanent residence or investment on the Costa del Sol.

[View Property Online](#)

GALLERY







Vivi Real Estate | Calle Almendralejo de Jarales 5 Mijas Costa, 29640

Tel: +34 672 816 975

Email: sales@vivi-realestate.com | Web: www.vivi-realestate.com