



Finca - Cortijo in Las Chapas

Price € 2,700,000

Bedrooms	5
Bathrooms	4.5
Build Size	790 m ²
Plot Size	110790 m ²

SETTING

- ✓ Close To Golf
- ✓ Close To Town
- ✓ Close To Schools
- ✓ Close To Forest

ORIENTATION

- ✓ South

CONDITION

- ✓ Good

POOL

- ✓ Private

CLIMATE CONTROL

- ✓ Air Conditioning
- ✓ Hot A/C
- ✓ Cold A/C
- ✓ Central Heating

VIEWS

- ✓ Sea
- ✓ Mountain
- ✓ Panoramic
- ✓ Garden
- ✓ Pool
- ✓ Forest

FEATURES

- ✓ Covered Terrace
- ✓ Fitted Wardrobes
- ✓ Private Terrace
- ✓ Guest Apartment
- ✓ Storage Room
- ✓ Utility Room
- ✓ Double Glazing
- ✓ Basement

FURNITURE

- ✓ Part Furnished

KITCHEN

- ✓ Fully Fitted

GARDEN

- ✓ Private

SECURITY

- ✓ Safe

PARKING

- ✓ Garage
- ✓ Private
- ✓ Open
- ✓ More Than One

UTILITIES

- ✓ Electricity
- ✓ Drinkable Water

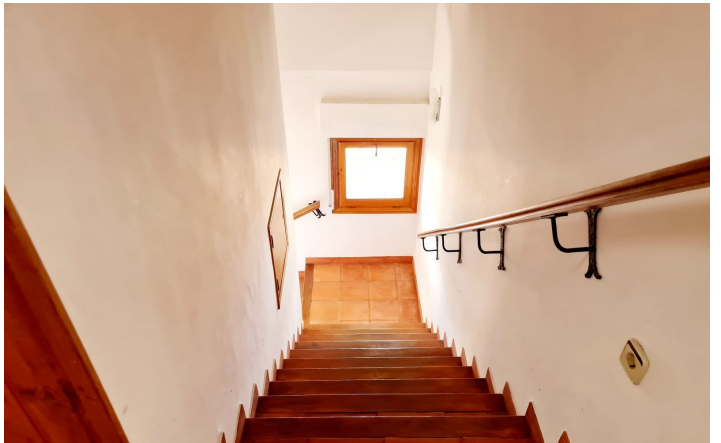
CATEGORY

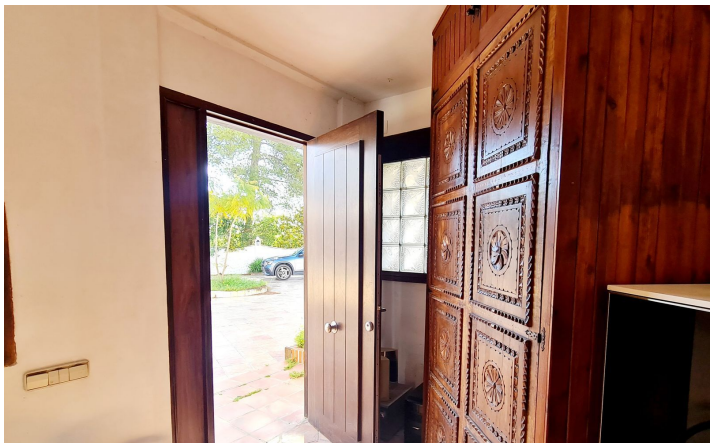
- ✓ Bargain
- ✓ Investment
- ✓ Resale
- ✓ Golf
- ✓ Luxury
- ✓ Holiday Homes
- ✓ Reduced

Country estate in the East of Marbella, for nature lovers. Great opportunity to build a dressage and circuit equestrian center with international competition capacity, in a quiet residential area just 10 minutes from the lively beaches and restaurants of Marbella. The plot has a total area of 110,000 m² and is located in Coto de los Dolores, near the small town of La Mairena in the mountains above Elviria and Las Chapas. There is a four-bedroom house, built in the centre of the plot, with a total area of 475m² with gardens and private pool and an additional one-bedroom house of 315m² with kitchen for guests. Both houses are connected to the town infrastructure. In addition, there are three water wells on the plot for agricultural purposes.

[View Property Online](#)

GALLERY







ViVi Real Estate | Calle Almendralejo de Jarales 5 Mijas Costa, 29640

Tel: +34 672 816 975

Email: sales@vivi-realestate.com | Web: www.vivi-realestate.com