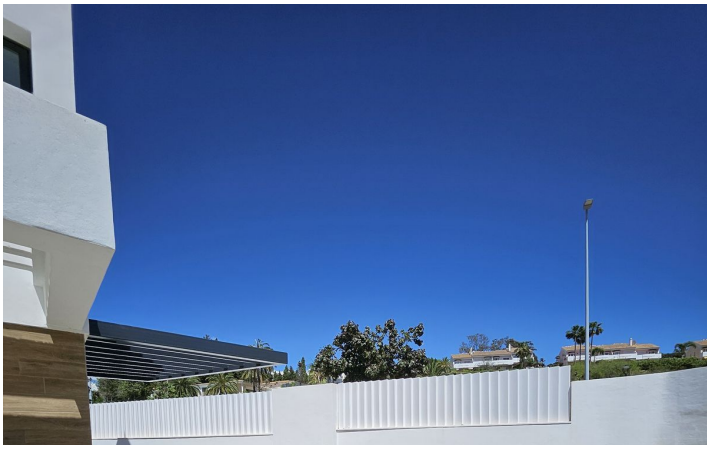


Reference: R5402203



WWW.VIVI-REALESTATE.COM
WWW.VIVI-HOMES.COM





Semi-Detached House in Atalaya

Price € 850,000

Bedrooms	3
Bathrooms	4
Build Size	225 m ²
Terrace	20 m ²
Plot Size	265 m ²

SETTING

- ✓ Commercial Area
- ✓ Urbanisation
- ✓ Close To Golf
- ✓ Close To Shops

ORIENTATION

- ✓ South West

CONDITION

- ✓ Excellent
- ✓ New Construction

POOL

- ✓ Communal

CLIMATE CONTROL

- ✓ Air Conditioning
- ✓ Central Heating
- ✓ Hot A/C
- ✓ U/F Heating
- ✓ Cold A/C
- ✓ U/F/H Bathrooms

VIEWS

- ✓ Mountain
- ✓ Panoramic
- ✓ Golf
- ✓ Garden
- ✓ Country

FEATURES

- ✓ Covered Terrace
- ✓ Solarium
- ✓ Ensuite Bathroom
- ✓ Domotics
- ✓ Fitted Wardrobes
- ✓ WiFi
- ✓ Marble Flooring
- ✓ Fiber Optic
- ✓ Private Terrace
- ✓ Utility Room
- ✓ Double Glazing

FURNITURE

- ✓ Part Furnished
- ✓ Not Furnished

KITCHEN

- ✓ Fully Fitted

GARDEN

- ✓ Communal
- ✓ Easy Maintenance
- ✓ Private
- ✓ Landscaped

SECURITY

- ✓ Gated Complex
- ✓ Safe

PARKING

- ✓ Street
- ✓ Private

UTILITIES

- ✓ Electricity
- ✓ Drinkable Water

CATEGORY

- ✓ Golf
- ✓ Investment
- ✓ Luxury
- ✓ Resale

UNIQUE OPPORTUNITY TO BUY UNIT 17 AND 18 FROM SAME OWNER

Serene Atalaya | 3 Bedroom Semi-Detached Villa with Solarium | Atalaya, Marbella

Discover this exceptional 3 bedroom semi-detached villa in Serene Atalaya F2, one of the most sought-after new developments on the Costa del Sol by Spain's leading developer Metrovacesa.

Set in the prestigious Atalaya area, bordering Marbella, Estepona and Benahavís, this beautifully designed villa offers the perfect blend of modern architecture, natural light and indoor-outdoor living. The property features 3 spacious bedrooms, 3 bathrooms, an open-plan kitchen with top-brand appliances, generous terrace, private garden and a stunning rooftop solarium — ideal for enjoying the legendary Andalusian sunshine year-round.

The villa's desirable west-facing orientation ensures sun from morning until sunset, while the elevated position on a gentle slope affords magnificent open views stretching towards the Mediterranean. Large windows throughout flood every room with natural light and seamlessly connect the interior spaces with the beautiful outdoor areas.

Serene Atalaya F2 is a gated community featuring two saltwater swimming pools — one for adults and one for children with beach-style access — set within beautifully landscaped communal gardens. The development holds an A energy efficiency and A CO2 emissions certification, reflecting the highest standards of sustainable modern construction.

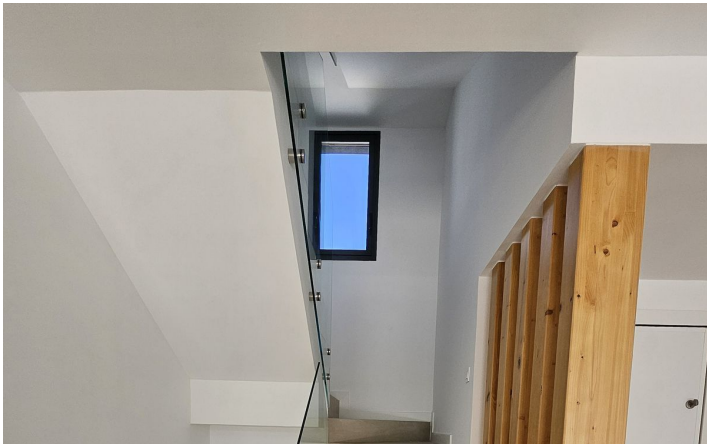
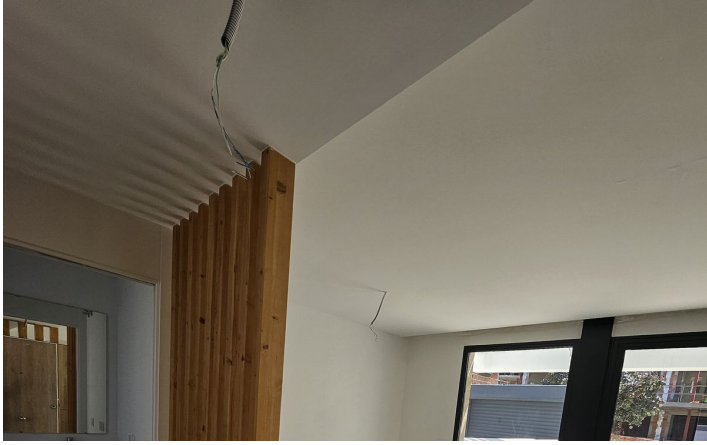
Located directly next to Atalaya Golf & Country Club, with Puerto Banús just minutes away and easy access to Marbella's beaches, restaurants, international schools and motorway connections, this is an outstanding opportunity for families and investors alike seeking quality, comfort and lifestyle on the Costa del Sol.

Key features:

3 bedrooms · 3 bathrooms · Private garden · Rooftop solarium · Gated community · 2 communal pools · Garage & storage · A energy rating · Next to Atalaya Golf · Minutes to Puerto Banús & Marbella

[View Property Online](#)

GALLERY







Vivi Real Estate | Calle Almendralejo de Jarales 5 Mijas Costa, 29640

Tel: +34 672 816 975

Email: sales@vivi-realestate.com | Web: www.vivi-realestate.com