



# Detached Villa in Benalmadena

Price € 1,275,000

Bedrooms	5
Bathrooms	4
Build Size	364 m <sup>2</sup>
Terrace	255 m <sup>2</sup>
Plot Size	1267 m <sup>2</sup>

## SETTING

- ✓ Close To Schools

## ORIENTATION

- ✓ South West
- ✓ West

## CONDITION

- ✓ Recently Renovated

## POOL

- ✓ Private

## CLIMATE CONTROL

- ✓ Air Conditioning
- ✓ Hot A/C

## VIEWS

- ✓ Sea
- ✓ Mountain
- ✓ Pool

## FEATURES

- ✓ Fitted Wardrobes
- ✓ Private Terrace
- ✓ Ensuite Bathroom
- ✓ Barbeque
- ✓ Double Glazing
- ✓ Fiber Optic

## FURNITURE

- ✓ Fully Furnished

## KITCHEN

- ✓ Fully Fitted

## GARDEN

- ✓ Private

## PARKING

- ✓ Street
- ✓ Private

## UTILITIES

- ✓ Electricity

## CATEGORY

✓ Holiday Homes

✓ Luxury

✓ Resale

---

Renovated detached Villa with beautiful sea and mountain views in Torremuelle, Benalmádena. Walking distance to a train station providing direct links to Malaga airport and centre. Local beaches are around a 20 minute walk.

### Property Highlights:

Bedrooms: 5 generously proportioned bedrooms all with air conditioning

Bathrooms: 4 modern bathrooms (including 2 en-suites)

Brand new luxury modern kitchen fitted with Bosch appliances plus separate utility room

Large open plan lounge/dining room with doors leading directly onto a large terrace which benefits from sea views

Outdoor Features: Large private swimming pool, various expansive terraces offering over 200m<sup>2</sup> of outside space for dining and relaxation

Views: Stunning, panoramic sea views and beautiful mountain views

Orientation: Prime South West orientation ensuring excellent winter sun and late evening sun in summer until sunset

Condition: Fully renovated

Set within a tranquil and exclusive enclave, this villa is a haven of peace and luxury. The recent, comprehensive renovation has created a contemporary living space, with an emphasis on brightness and style. Step outside and there are 3 large terraces, the largest has an outside kitchen, bbq and dining areas and on the lower one there is a large sparkling private pool with more sunbathing areas.

The exceptional, sun-drenched orientation is a key feature, capturing the best of the Mediterranean sun throughout the day and into the late evening during the summer months, while also providing excellent warmth during the winter.

### Location and Amenities:

The villa is ideally located in upper Torremuelle benefitting from wonderful sea views. Torremuelle is a highly desirable residential area known for its tranquility, natural beauty and excellent transport links.

Transport Hub: A 10-minute walk leads directly to the local Torremuelle train station (RENFE C1 line), providing swift and easy access to Málaga Airport, Central Málaga and Fuengirola, making travel a breeze.

Beaches: Just 3 minutes by car or a 20 minute walk to various beautiful beaches.

Local Charm: Enjoy the convenience of walking distance to the charming, traditional Spanish village of Benalmádena Pueblo and its many amenities, including local shops, restaurants and bars.

Three International private schools are within a few minutes drive, one within walking distance. State primary and secondary schools are also close by.

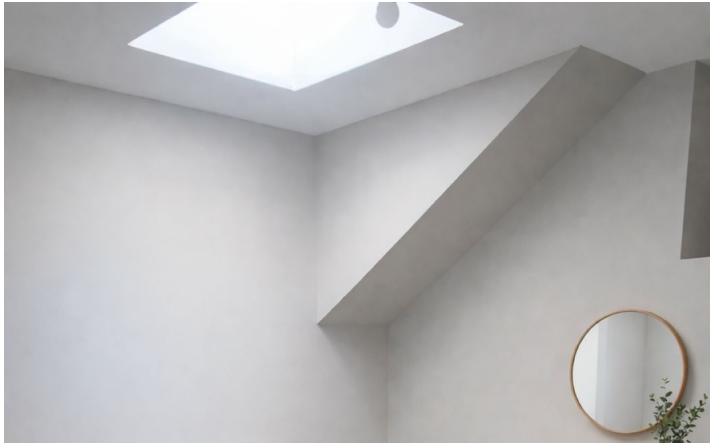
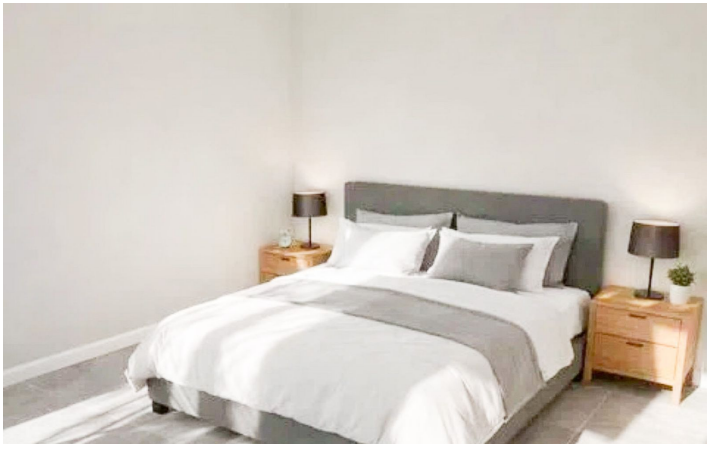
New racket centre within walking distance offering 7 padel courts, 2 tennis courts, snack bar, swimming pool, pro shop, physiotherapy and sport massage services

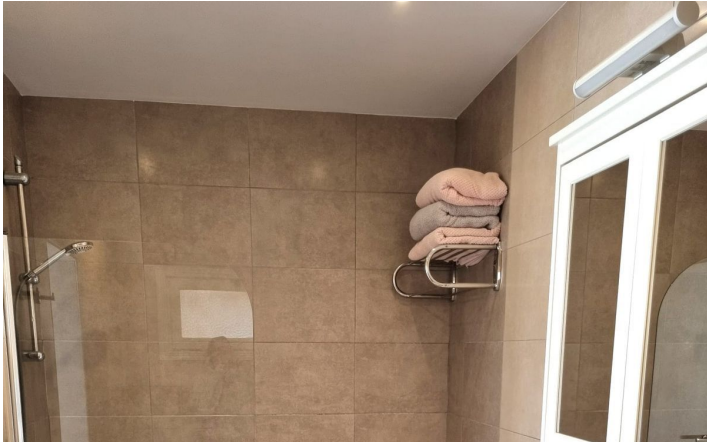
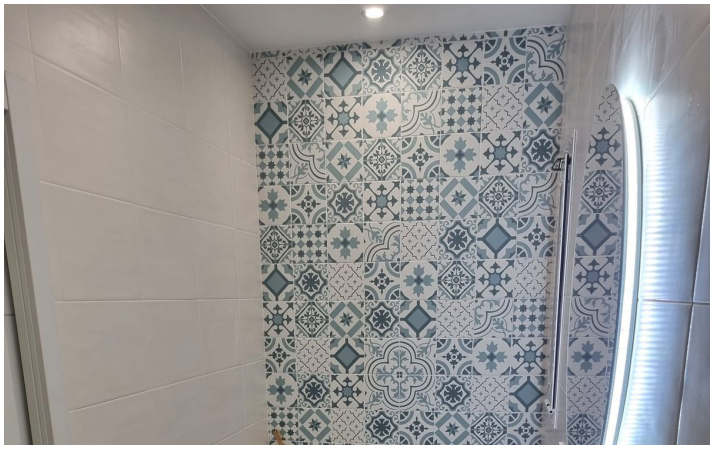
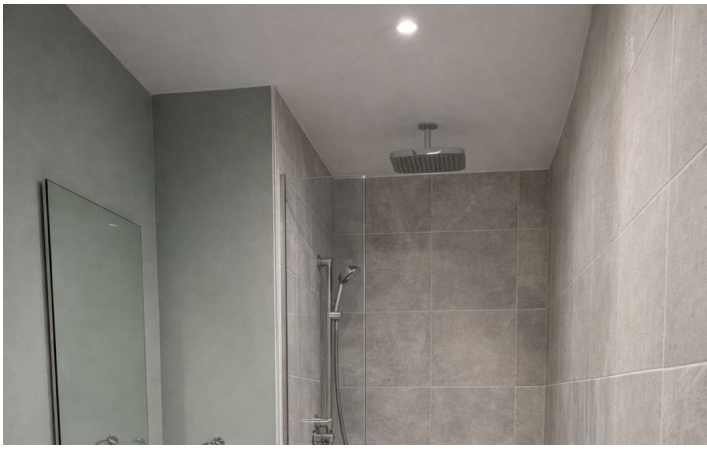
This property offers a blend of privacy, luxury, stunning natural beauty, and excellent convenience, making it the perfect setting for your dream Spanish home.

[View Property Online](#)

# GALLERY







---

Vivi Real Estate | Calle Almendralejo de Jarales 5 Mijas Costa, 29640

Tel: +34 672 816 975

Email: [sales@vivi-realestate.com](mailto:sales@vivi-realestate.com) | Web: [www.vivi-realestate.com](http://www.vivi-realestate.com)