

# Penthouse Duplex in Benalmadena

Price € 549,000

Bedrooms	2
Bathrooms	2
Build Size	94 m <sup>2</sup>
Terrace	142 m <sup>2</sup>
Plot Size	236 m <sup>2</sup>

## SETTING

- ✓ Frontline Golf
- ✓ Close To Port
- ✓ Close To Schools
- ✓ Urbanisation
- ✓ Port
- ✓ Close To Sea
- ✓ Close To Forest
- ✓ Close To Golf
- ✓ Close To Town
- ✓ Close To Marina

## ORIENTATION

- ✓ South West

## CONDITION

- ✓ Recently Renovated

## POOL

- ✓ Communal
- ✓ Children`s Pool

## CLIMATE CONTROL

- ✓ Air Conditioning
- ✓ Central Heating
- ✓ Hot A/C
- ✓ Cold A/C

## VIEWS

- ✓ Sea
- ✓ Panoramic
- ✓ Mountain
- ✓ Pool
- ✓ Golf

## FEATURES

- ✓ Covered Terrace
- ✓ Near Transport
- ✓ Satellite TV
- ✓ Paddle Tennis
- ✓ Utility Room
- ✓ Marble Flooring
- ✓ Barbeque
- ✓ Restaurant On Site
- ✓ Near Church
- ✓ Lift
- ✓ Private Terrace
- ✓ WiFi
- ✓ Tennis Court
- ✓ Ensuite Bathroom
- ✓ Jacuzzi
- ✓ Double Glazing
- ✓ Courtesy Bus
- ✓ Fiber Optic
- ✓ Fitted Wardrobes
- ✓ Solarium
- ✓ Gym
- ✓ Storage Room
- ✓ Access for people with reduced mobility
- ✓ Bar
- ✓ 24 Hour Reception
- ✓ Near Mosque

## FURNITURE

- ✓ Optional

## KITCHEN

- ✓ Fully Fitted

## GARDEN

- ✓ Communal
- ✓ Landscaped
- ✓ Easy Maintenance

## SECURITY

- ✓ Gated Complex
- ✓ Alarm System
- ✓ Safe

## PARKING

- ✓ Garage
- ✓ Covered
- ✓ More Than One
- ✓ Private

## UTILITIES

- ✓ Electricity
- ✓ Drinkable Water
- ✓ Telephone

## CATEGORY

- ✓ Bargain
- ✓ Beachfront
- ✓ Cheap
- ✓ Distressed
- ✓ Golf
- ✓ Investment
- ✓ Luxury
- ✓ Resale

---

Exclusive duplex penthouse with panoramic sea and mountain views in Benalmádena, Costa del Sol!

It stands out for its spaciousness, privacy and extraordinary outdoor areas, set within one of the most highly regarded and well-established residential complexes in the area.

The property has a built area of 94.22 m<sup>2</sup>, plus 77.38 m<sup>2</sup> of the two main terraces and 65 m<sup>2</sup> of private solarium, giving a total usable area of 236 m<sup>2</sup>.

It comprises 2 bedrooms and 2 full bathrooms. The master bedroom features an en-suite bathroom with a jacuzzi and a walk-in wardrobe, whilst the second bedroom opens directly onto a private terrace with lovely unobstructed views.

The separate kitchen enjoys plenty of natural light and is a functional space designed for everyday living. The living-dining room connects directly to a spacious main terrace, divided into two distinct areas: an outdoor area with a storage room and barbecue area, and a covered area enclosed by glass panels, currently fitted out as an elegant chill-out space, ideal for enjoying at any time of year.

As a major added bonus, the property offers a spectacular private sun terrace of 65 m<sup>2</sup>, accessible via an external staircase. A true space for leisure and relaxation, it includes an area with sun loungers, a drinks bar, a fridge and a covered area with wooden cladding where an inflatable hot tub has been installed, creating the perfect setting for unwinding or entertaining guests.

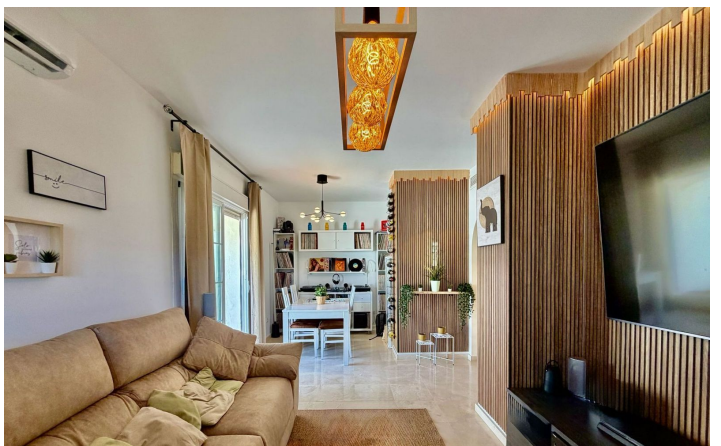
Also included are two large parking spaces in a row, totalling 56 m<sup>2</sup>, and two spacious storage rooms, providing a highly valuable extra in terms of convenience and storage.

One of the most well-equipped and sought-after residential developments in Benalmádena, surrounded by extensive green spaces and swimming pools. Just a few metres away is the Pitch & Putt golf course, a social club with a restaurant and café, a gym, padel and tennis courts, as well as a range of sports and leisure activities available all year round. Excellent location next to Vithas Xanit Hospital and with easy access to the motorway

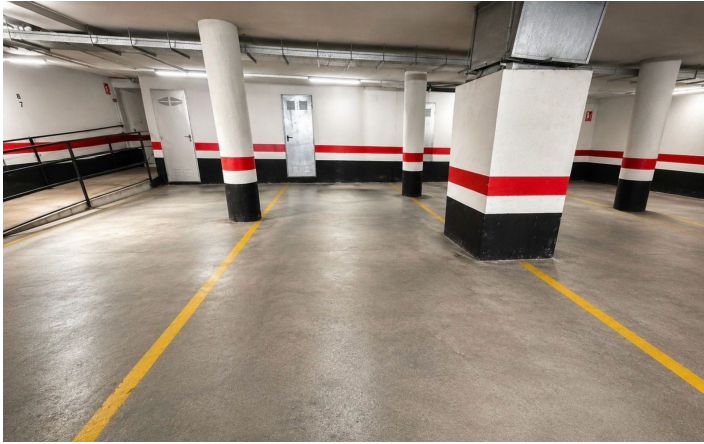
A rare find on the market due to its spacious terraces, privacy and fittings, ideal as a main residence, a second home or an investment property.

[View Property Online](#)

# GALLERY







---

Vivi Real Estate | Calle Almendralejo de Jarales 5 Mijas Costa, 29640

Tel: +34 672 816 975

Email: [sales@vivi-realestate.com](mailto:sales@vivi-realestate.com) | Web: [www.vivi-realestate.com](http://www.vivi-realestate.com)