

# Detached Villa in Torremuelle

Price **€ 1,800,000**

Bedrooms	4
Bathrooms	3
Build Size	305 m <sup>2</sup>
Plot Size	2049 m <sup>2</sup>

## SETTING

- ✓ Suburban
- ✓ Close To Sea
- ✓ Close To Schools

## ORIENTATION

- ✓ South

## CONDITION

- ✓ Renovation Required

## POOL

- ✓ Private

## CLIMATE CONTROL

- ✓ Hot A/C
- ✓ Cold A/C
- ✓ Fireplace

## VIEWS

- ✓ Garden

## FEATURES

- ✓ Lift
- ✓ Fitted Wardrobes
- ✓ Private Terrace
- ✓ Satellite TV
- ✓ Gym
- ✓ Sauna
- ✓ Ensuite Bathroom
- ✓ Access for people with reduced mobility
- ✓ Marble Flooring
- ✓ Barbeque
- ✓ Double Glazing
- ✓ Staff Accommodation

## FURNITURE

- ✓ Optional

## KITCHEN

- ✓ Fully Fitted

## GARDEN

- ✓ Private

## SECURITY

- ✓ Gated Complex

## PARKING

- ✓ Garage
- ✓ More Than One

## UTILITIES

- ✓ Electricity
  - ✓ Drinkable Water
  - ✓ Telephone
  - ✓ Photovoltaic solar panels
- 

Set in one of Benalmádena's most desirable residential areas, this substantial detached villa offers an exceptional opportunity in the heart of the Costa del Sol. Combining generous living spaces, sea views, and excellent accessibility, the property is currently enjoyed as a spacious family home but also offers exciting potential as a boutique guest house, B&B, wellness retreat, or multi-generational residence.

Designed to maximise natural light throughout, the villa features a lift serving multiple levels, separate staff accommodation, and a versatile layout that can easily adapt to a variety of uses. The elevated position allows for pleasant views towards the Mediterranean, while the generous proportions create a sense of space and privacy rarely found so close to the coast.

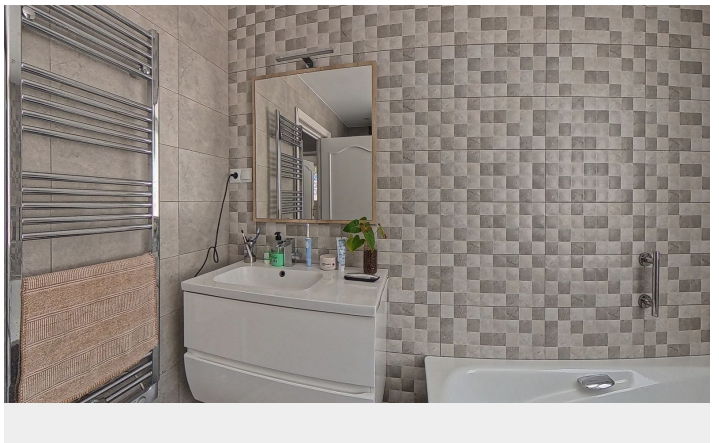
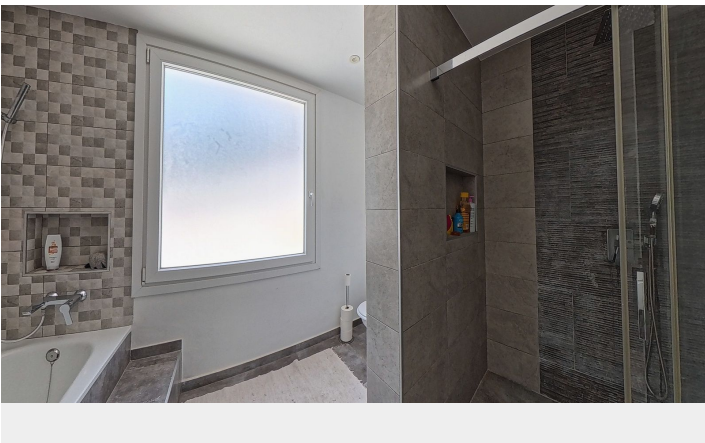
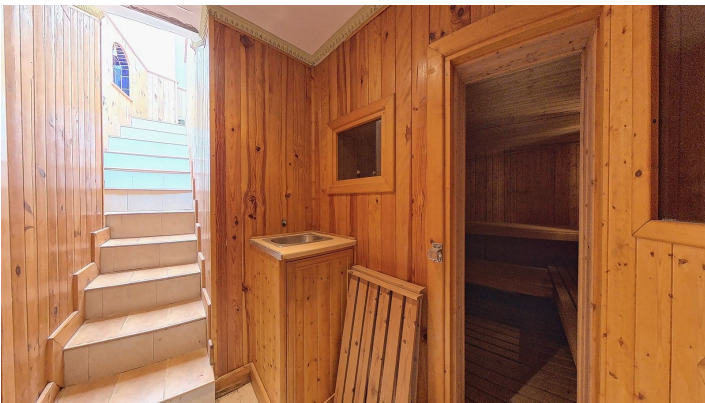
Located in the sought-after Torremuelle area, the property enjoys a peaceful residential setting surrounded by attractive villas and established communities. Residents benefit from easy access to nearby beaches, green spaces, a wide selection of restaurants, supermarkets, international schools, and everyday amenities. The renowned Torrequebrada Golf is also just a short drive away.

One of Torremuelle's greatest attractions is its strategic location. Excellent road and rail connections provide convenient access to both Málaga city centre and Málaga-Costa del Sol Airport, making it an ideal choice for permanent living, holiday use, or investment.

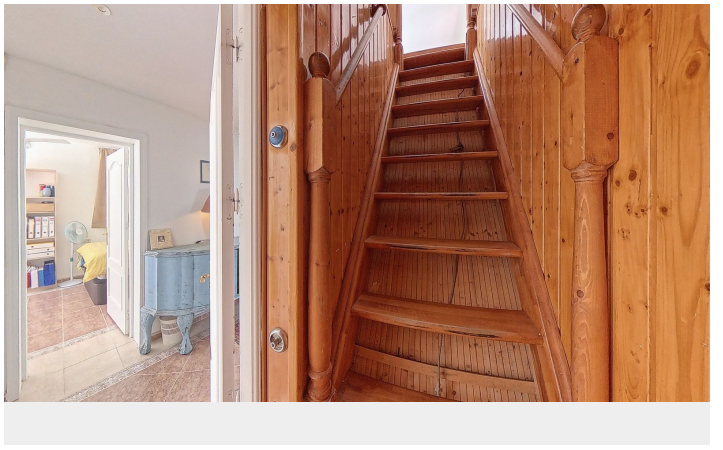
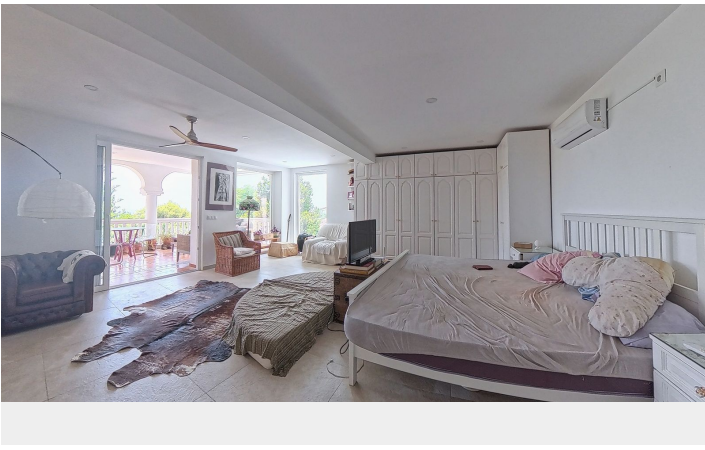
Offering space, flexibility, and a prime Costa del Sol location, this is a property with enormous potential for those seeking a distinguished home or a lifestyle business opportunity.

[View Property Online](#)

# GALLERY







---

ViVi Real Estate | Calle Almendralejo de Jarales 5 Mijas Costa, 29640

Tel: +34 672 816 975

Email: [sales@vivi-realestate.com](mailto:sales@vivi-realestate.com) | Web: [www.vivi-realestate.com](http://www.vivi-realestate.com)