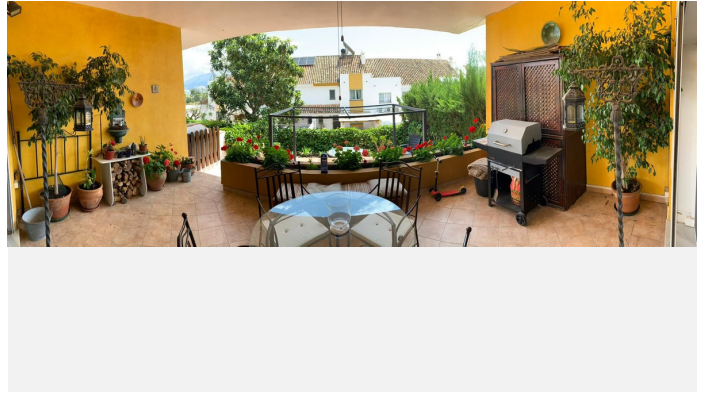




WWW.VIVI-REALESTATE.COM
WWW.VIVI-HOMES.COM



RÆKKEHUS 3 BEDROOMS 3 BATHROOMS IN ATALAYA

📍 Atalaya

REF# V4661272 **440.000 €**

BEDS	BATHS	BUILT	PLOT	TERRACE
3	3	161 m ²	108 m ²	40 m ²

Beautiful semi-detached house in the area of Atalaya. Ideal for families.

The property has spacious rooms, square living room with access to a terrace facing EAST. Fireplace and air conditioning.

Large entrance porch with jacuzzi and parking for 2 cars. Cistern.

On the first floor, 3 bedrooms with 2 bathrooms. All exterior. The house has EAST-WEST orientation.

In the basement there is a large games room, storage room and other uses. The community has beautiful consolidated gardens and swimming pool.

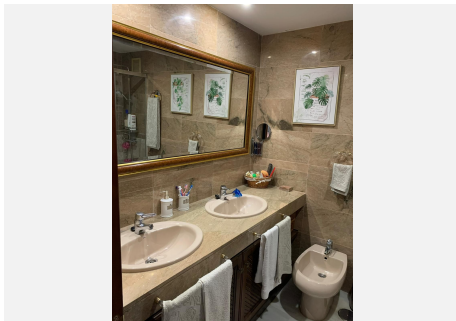
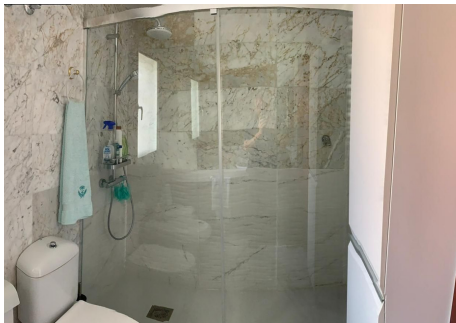
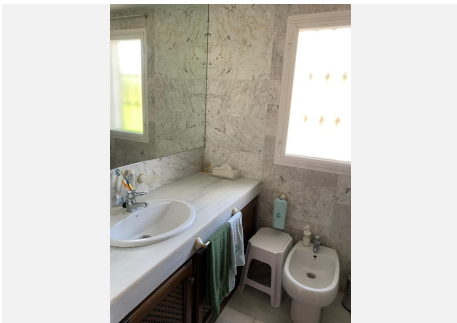
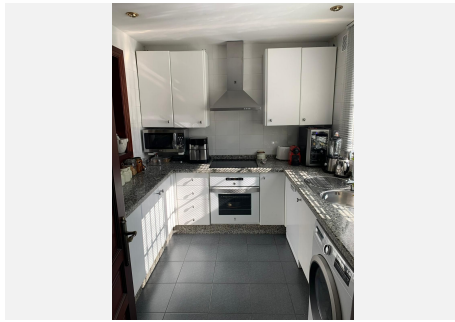
Only 55 neighbours.

Very well communicated with motorway and very close to the Atalaya School.

Translated with DeepL.com (free version)



WWW.VIVI-REALESTATE.COM
WWW.VIVI-HOMES.COM





WWW.VIVI-REALESTATE.COM
WWW.VIVI-HOMES.COM

