



WWW.VIVI-REALESTATE.COM
WWW.VIVI-HOMES.COM



HUS 6 BEDROOMS 6 BATHROOMS IN THE GOLDEN MILE

📍 The Golden Mile

REF# V4766305 **6.400.000 €**

BEDS

6

BATHS

6

BUILT

647 m²

PLOT

1441 m²

TERRACE

284 m²

Sophisticated independent villa located in a prestigious urbanization on the Golden Mile – Lomas de Marbella Club. It is one of the most popular luxury residential areas in Marbella, maintaining its elegant and original appearance, with large and perfect green areas, 24-hour security, quality of life and architecture. The urbanization is located 10 minutes from the center of Marbella, 40 km from Malaga.

International Airport, 50 km from the AVE station and 85 km from Gibraltar Airport.

Its location north of the Golden Mile, in front of Puente Romano and near the Royal Mosque with its impressive Andalusian Arab architecture, makes it a privileged area. On the other hand, the urbanization is close to a legendary 5* hotel, Michelin-starred restaurants, numerous golf courses and international schools, Marbella and Puerto Banús. Wide variety of fashion boutiques, restaurants and nightlife.



WWW.VIVI-REALESTATE.COM
WWW.VIVI-HOMES.COM





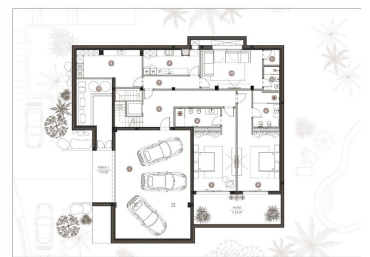
WWW.VIVI-REALESTATE.COM
WWW.VIVI-HOMES.COM



DETACHED VILLAS

BASEMENT FLOOR

NAME	BUILT
Garage	24,20 m ²
Reception	30,00 m ²
Bedroom 1	20,70 m ²
Bedroom 2	27,00 m ²
Bedroom 3	23,20 m ²
Bedroom 4	2,70 m ²
Storage	4,00 m ²
Laundry	12,00 m ²
W.C. Bathroom	10,00 m ²
W.C. Living Area/Bathroom	17,75 m ²
W.C. Kitchen	10,00 m ²
W.C. Bedroom	2,20 m ²
W.C. Bedroom 2	3,00 m ²
W.C. Terrace/Bath	10,00 m ²
BASEMENT FLOOR	133,85 m²
TOTAL HOUSE AREA	538,00 m²



DETACHED VILLAS

FIRST FLOOR

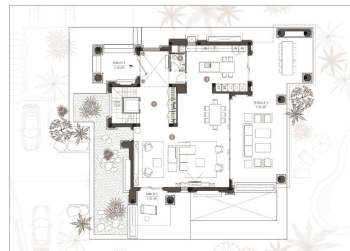
NAME	BUILT
Hallway	16,10 m ²
Living 1	12,20 m ²
Bedroom 1	14,00 m ²
Bedroom 2	4,20 m ²
W.C. Bedroom	10,20 m ²
W.C. Bedroom 2	14,20 m ²
W.C. Living Area	12,20 m ²
W.C. Kitchen	12,20 m ²
W.C. Bedroom	12,20 m ²
W.C. Bedroom 2	12,20 m ²
W.C. Bedroom 3	4,20 m ²
FIRST FLOOR	133,85 m²
TOTAL HOUSE AREA	538,00 m²



DETACHED VILLAS

GROUND FLOOR

NAME	BUILT
Hall Corridor	14,00 m ²
Living Area	12,20 m ²
W.C. Living	12,20 m ²
W.C. Kitchen	12,20 m ²
W.C. Bedroom	2,20 m ²
GROUND FLOOR	133,85 m²
TOTAL HOUSE AREA	538,00 m²



DETACHED VILLAS

ROOF TERRACE

NAME	BUILT
Roof	4,10 m ²
W.C.	12,20 m ²
W.C.	1,70 m ²
ROOF TERRACE	18,00 m²
TOTAL HOUSE AREA	538,00 m²

