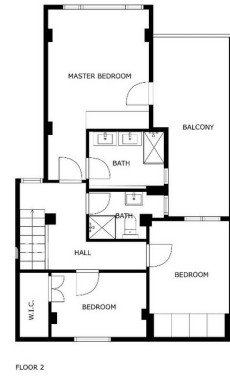




WWW.VIVI-REALESTATE.COM
WWW.VIVI-HOMES.COM



LEJLIGHED PÅ MELLEEMSTE ETAGE 3 BEDROOMS 2 BATHROOMS IN NUEVA ANDALUCÍA

📍 Nueva Andalucía

REF# V4728418 **530.000 €**

BEDS

3

BATHS

2

BUILT

239 m²

PLOT

100 m²

A rare to the market corner apartment conveniently located in Nueva Andalucía, close to the famous Puerto Banus marina with its signature shops and famous restaurants. Central to all amenities, walking distance to several golf courses, and just a very short drive to Marbella.

This bright and cosy corner apartment has east orientation and simply stunning views towards the iconic La Concha mountain. The community is very well established and is fully gated, with entrances from two different streets.

The apartment is well distributed over two floors, the entrance leads from the terrace into the open plan living room and ample kitchen area. There is a guest WC and outside patio area on the first level, with potential to create another terrace. Upstairs there are three bedrooms, the master bedroom is ensuite, has built-in wardrobes and spectacular views towards the mountain and over the community area. There is an



WWW.VIVI-REALESTATE.COM
WWW.VIVI-HOMES.COM

