



Penthouse in Atalaya

Price € 700,000

| | |
|------------|--------|
| Bedrooms | 3 |
| Bathrooms | 3 |
| Build Size | 144 m² |
| Terrace | 156 m² |
| Plot Size | 300 m² |

SETTING

- ✓

Close To Shops
- ✓

Close To Town
- ✓

Close To Schools
- ✓

Urbanisation

CONDITION

- ✓

Excellent
- ✓

Good

VIEWS

- ✓

Mountain
- ✓

Golf

FEATURES

- ✓

Covered Terrace
- ✓

Lift
- ✓

Fitted Wardrobes
- ✓

Private Terrace
- ✓

Solarium
- ✓

Gym
- ✓

Sauna
- ✓

Storage Room
- ✓

Basement

FURNITURE

- ✓

Fully Furnished

KITCHEN

- ✓

Fully Fitted

GARDEN

- ✓

Communal

SECURITY

- ✓

Gated Complex

PARKING

- ✓

Underground
- ✓

Private

CATEGORY

- ✓

Golf

This elegant penthouse is located in the exclusive gated community of Benatalaya, in the Atalaya-Capanes Sur area of Benahavís, at the entrance of Estepona's New Golden Mile. Surrounded by top golf courses and offering high-end facilities, this property is ideal for buyers seeking quality, privacy, and exceptional views.

Key Features:

- 3 en-suite bedrooms
- 3 full bathrooms
- Fully furnished
- Fully fitted modern kitchen
- Grand private terrace with panoramic views of the golf course, countryside, and the Mediterranean Sea
- 2 underground parking spaces
- Gated complex with 24-hour security
- Access to 5 outdoor pools, indoor heated pool, gym, spa, Jacuzzi, sauna, and hydro-massage
- Tennis court located just 300 meters away

About Benatalaya:

Benatalaya is a high-end residential complex built on a tiered hillside, offering impressive views of its surroundings. The community features approximately 25,000 m² of beautifully landscaped gardens, modern facilities, and secure, controlled access. It consists of low-rise apartment buildings, each with underground parking and storage.

Location:

Located just minutes from San Pedro de Alcántara, Puerto Banús, and Marbella, with easy access to shopping, restaurants, golf, international schools, and beaches.

Contact us today to arrange a viewing.

Penthouse, Atalaya, Costa del Sol.

3 Bedrooms, 3 Bathrooms, Built 144 m², Terrace 156 m².

Setting : Close To Shops, Close To Town, Close To Schools, Urbanisation.

Condition : Excellent, Good.

Views : Mountain, Golf.

Features : Covered Terrace, Lift, Fitted Wardrobes, Private Terrace, Solarium, Gym, Sauna, Storage Room, Basement.

Furniture : Fully Furnished.

Kitchen : Fully Fitted.

Garden : Communal.

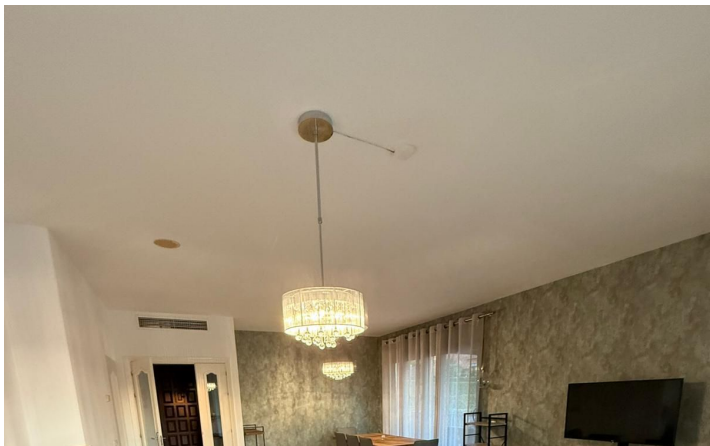
Security : Gated Complex.

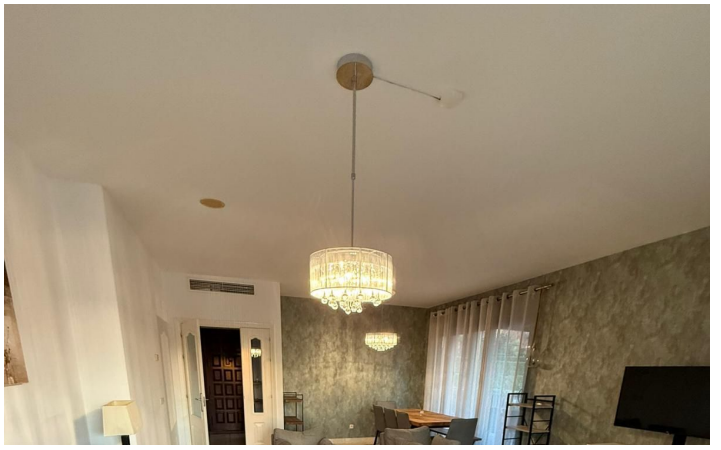
Parking : Underground, Private.

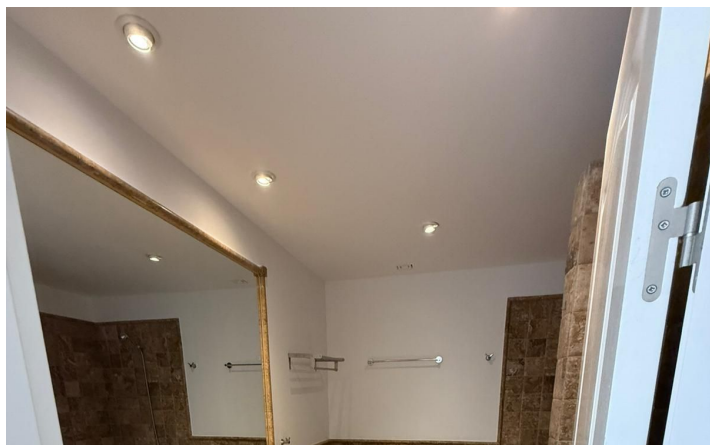
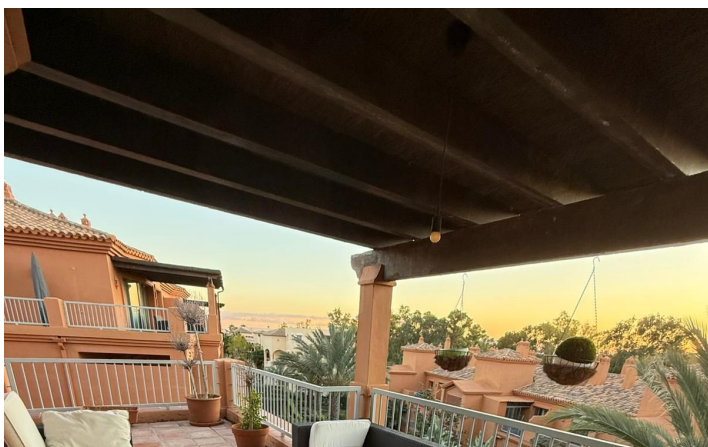
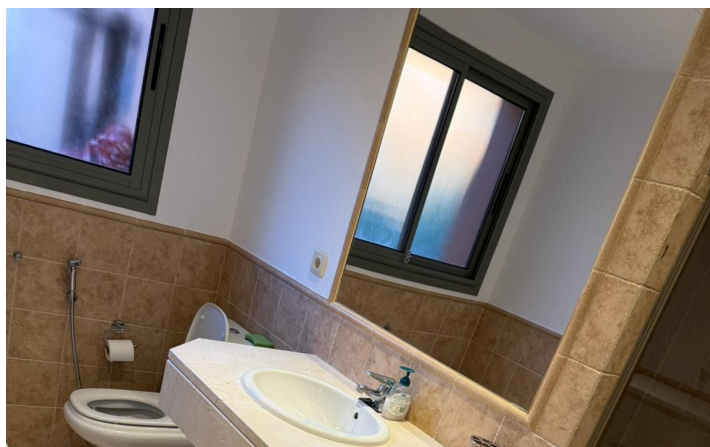
Category : Golf.

[View Property Online](#)

GALLERY







Vivi Real Estate | Calle Almendralejo de Jarales 5 Mijas Costa, 29640
Tel: +34 672 816 975
Email: sales@vivi-realestate.com | Web: www.vivi-realestate.com