



# Detached Villa in Coín

Price € 850,000

|            |        |
|------------|--------|
| Bedrooms   | 3      |
| Bathrooms  | 2      |
| Build Size | 215 m² |
| Plot Size  | 824 m² |

## SETTING

- ✓ Close To Shops
- ✓ Close To Town

## ORIENTATION

- ✓ South

## CONDITION

- ✓ Excellent

## POOL

- ✓ Private

## CLIMATE CONTROL

- ✓ Air Conditioning

## VIEWS

- ✓ Mountain
- ✓ Country
- ✓ Urban
- ✓ Street

## FEATURES

- ✓ Covered Terrace
- ✓ Lift
- ✓ Fitted Wardrobes
- ✓ Near Transport
- ✓ Private Terrace
- ✓ Storage Room
- ✓ Utility Room
- ✓ Ensuite Bathroom

## FURNITURE

- ✓ Optional

## KITCHEN

- ✓ Fully Fitted

## GARDEN

- ✓ Private
- ✓ Landscaped
- ✓ Easy Maintenance

## PARKING

- ✓ Garage
- ✓ Street
- ✓ Private

## UTILITIES

- ✓ Electricity
- ✓ Drinkable Water

## CATEGORY

✓ Off Plan

---

Connect with nature in these beautiful 3-storey villas on the outskirts of Coín. The large floor to ceiling window on the ground floor provides so much light that you could easily forget if you are inside or out, in the living room or on the terrace. It is a feeling of total continuity. In every space of the home, you can feel the connection with the natural environment, the garden, the terrace, the landscape, whilst taking in the breathtaking views.

The design is inspired by the transparent waters of a crystalline river and helps you appreciate the beauty and the connection with the natural environment in every corner of the home. Its cubic and modular shape provides large open spaces that help you lead a comfortable and relaxed life.

The Basement level provides both vehicle and pedestrian access to the house, parking area, machine room and the lift (elevator).

The Ground Floor has the living room, kitchen-diner, and guest WC, plus a covered terrace and swimming pool outside.

The Top Floor is where the bedrooms are, all with fitted wardrobes. The main bedroom has an ensuite bathroom, dressing room and covered terrace. The other two bedrooms have fitted wardrobes and a covered terrace with access to a shared bathroom.

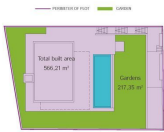
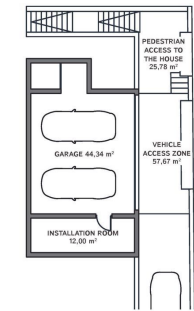
The garden will be landscaped with decorative plants, further adding to the appeal of the property.

The design of the villa will be adjusted to the client's taste. The location of the property can be chosen from the amongst the currently available plots and the house fixtures can be chosen from one of three different standard packages, though this can also be personalised according to the client's preference.

[View Property Online](#)

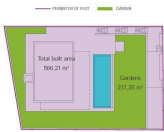
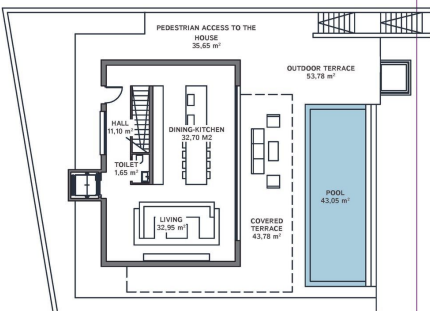
GALLERY

BASEMENT



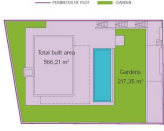
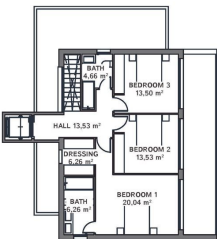
|                          |           |
|--------------------------|-----------|
| GENERAL:                 |           |
| Plot                     | 600.00 m² |
| Built area               | 215.75 m² |
| Contributed area         | 200.42 m² |
| Total built area         | 566.21 m² |
| Garden                   | 217.25 m² |
| Pool                     | 35.75 m²  |
| Access ways              | 140.71 m² |
| Outdoor terrace          | 95.78 m²  |
| Covered Parking Spaces   | 2 lot     |
| Uncovered Parking Spaces | 1 lot     |

GROUND FLOOR



|                          |           |
|--------------------------|-----------|
| GENERAL:                 |           |
| Plot                     | 600.00 m² |
| Built area               | 215.75 m² |
| Contributed area         | 200.42 m² |
| Total built area         | 566.21 m² |
| Garden                   | 217.25 m² |
| Pool                     | 35.75 m²  |
| Access ways              | 140.71 m² |
| Outdoor terrace          | 95.78 m²  |
| Covered Parking Spaces   | 2 lot     |
| Uncovered Parking Spaces | 1 lot     |

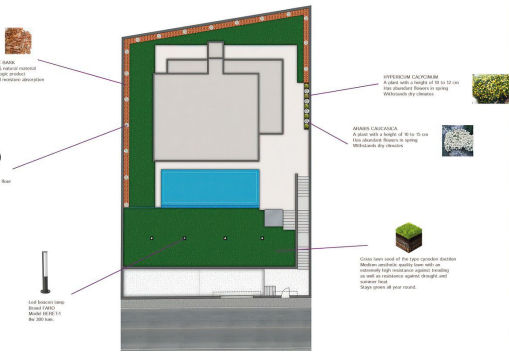
TOP FLOOR



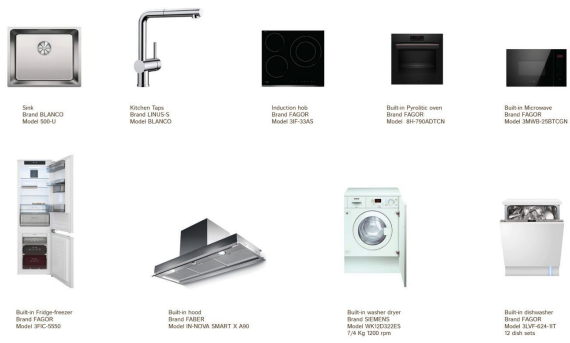
|                          |           |
|--------------------------|-----------|
| GENERAL:                 |           |
| Plot                     | 600.00 m² |
| Built area               | 215.75 m² |
| Contributed area         | 200.42 m² |
| Total built area         | 566.21 m² |
| Garden                   | 217.25 m² |
| Pool                     | 35.75 m²  |
| Access ways              | 140.71 m² |
| Outdoor terrace          | 95.78 m²  |
| Covered Parking Spaces   | 2 lot     |
| Uncovered Parking Spaces | 1 lot     |

| OUTDOOR AND INDOOR LIGHTING   |   |   |  | GOLD PLUS  |   |
|---|---|---|--|--|---|
| LIVING ROOM AND BEDROOMS  | HALL AND STEPS  | KITCHENS, BATHROOMS AND TOILETS   | TERRACES   | ACCESS AND OUTDOORS  | OTHER ROOMS   |
| <br>Recessed lamp ceiling<br>Brand FALCO<br>Model HYDE<br>24w 3000 lum.<br><br><br>Emergency lamp<br>Brand DALIALUX<br>Model ZNER | <br>Recessed lamp ceiling<br>Brand FALCO<br>Model HYDE<br>24w 3000 lum.<br><br><br>Emergency lamp<br>Brand DALIALUX<br>Model ZNER | <br>Kitchen and Bath<br>Ceiling lamp<br>Brand MANTRA<br>Model SACHIN<br>24w 2400 lum.<br><br><br>Toilet<br>Recessed lamp ceiling<br>Brand FALCO<br>Model HYDE<br>24w 300 lum.<br><br><br>Emergency lamp<br>Brand DALIALUX<br>Model ZNER | <br>Wall lamp<br>Brand MANTRA<br>Model KANIANCHI<br>24w 780 lum.<br><br><br>Ceiling<br>Monochrome LED strip<br>Incorporated in the aluminum<br>profile 1200 mm | <br>Recessed lamp wall<br>Brand MANTRA<br>Model SACHIN-R<br>24w 400 lum.<br><br><br>Emergency lamp<br>Brand DALIALUX<br>Model ZNER | <br>Ceiling lamp<br>Brand DALIALUX<br>Model OUTDOOR<br>24w 2400 lum.<br><br><br>Ceiling lamp<br>Brand DALIALUX<br>Model ARRA 7L<br><br><br>Emergency lamp<br>Brand DALIALUX<br>Model ZNER |

GARDENING



KITCHENS



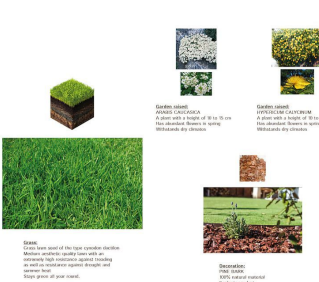
GARDENING

Feeling the aroma and color of a flower every dawn is joy, love, pleasure.

In Villa A La Carti we have designed the gardening with the necessary aspect of how to achieve the beauty, joy and pleasure of nature in the living spaces. Plants, flowers and trees have been chosen to give you a sense of the confidence and harmony of nature. Flowers are beautiful, aromatic and healthy, but they require care. We have selected different plants to bring you joy at different times of the year.

ILLUMINATION AND IRRIGATION

VEGETATION



---

ViVi Real Estate | Calle Almendralejo de Jarales 5 Mijas Costa, 29640

Tel: +34 672 816 975

Email: [sales@vivi-realestate.com](mailto:sales@vivi-realestate.com) | Web: [www.vivi-realestate.com](http://www.vivi-realestate.com)