

# Penthouse Duplex in Benalmadena Costa

Price **€ 1,975,000**

Bedrooms	4
Bathrooms	4
Build Size	313 m²
Terrace	59 m²
Plot Size	372 m²

## SETTING

- ✓ Port
- ✓ Close To Sea
- ✓ Close To Marina
- ✓ Close To Golf
- ✓ Close To Town
- ✓ Front Line Beach Complex
- ✓ Close To Port
- ✓ Marina

## ORIENTATION

- ✓ East
- ✓ South West
- ✓ South East
- ✓ West
- ✓ South

## CONDITION

- ✓ Excellent
- ✓ Recently Renovated

## POOL

- ✓ Communal

## CLIMATE CONTROL

- ✓ Air Conditioning
- ✓ Hot A/C

## VIEWS

- ✓ Sea
- ✓ Port
- ✓ Panoramic

## FEATURES

- ✓ Covered Terrace
- ✓ Near Transport
- ✓ WiFi
- ✓ Marble Flooring
- ✓ Fiber Optic
- ✓ Lift
- ✓ Private Terrace
- ✓ Ensuite Bathroom
- ✓ Jacuzzi
- ✓ Fitted Wardrobes
- ✓ Solarium
- ✓ Access for people with reduced mobility
- ✓ Double Glazing

## FURNITURE

- ✓ Part Furnished

## KITCHEN

- ✓ Fully Fitted

## GARDEN

- ✓ Private

## SECURITY

- ✓ Gated Complex
- ✓ Entry Phone

## PARKING

- ✓ Underground
- ✓ Garage

## UTILITIES

- ✓ Electricity
- ✓ Drinkable Water

## CATEGORY

- ✓ Luxury
  - ✓ Resale
- 

For sale this front line luxurious four-bedroom duplex penthouse in the famous Puerto Marina in Benalmádena Costa.

This stunning penthouse has been reformed to the highest standard mixing modern with contemporary living, it is one of the best penthouses front line Port that you will ever get the chance to buy. Entering the property, you have a spacious hallway that leads into a living space. On this floor natural light flows into the property effortlessly and you will also find the sleek marble kitchen and breakfast bar, accompanied by an open plan dining space.

This level also has spacious terraces where you and your family can sit and enjoy the tranquillity of this amazing property, with the most amazing open views looking over the Marina and to the sea.

The property 4 double bedrooms, 3 with their own ensuite bathrooms, giving the privacy and comfort for everybody. The bathrooms are designed and have modern finishes.

The master suite is a great on its own, with all the space and a walk-in closet that is sure to please design and style lovers.

This corner penthouse is very light, thanks to its corner location and southwest orientation. You will enjoy natural light throughout the day, especially in the living room, where you can relax and have the spectacular views of the sea. Imagine enjoying picturesque sunsets from here!

One of the specialties of this property is its private solarium which is accessed from the living room, via a spiral staircase which takes you up to the private roof terrace, which is amazing for its views and the size of it. Here you can enjoy the sun all day long, relax in the chill-out area and take advantage of the outdoor kitchen to prepare delicious meals al fresco. This space is perfect for socializing with friends and family while taking in the stunning panoramic views.

Includes part of the furniture and garage space, it has everything to start enjoying now!

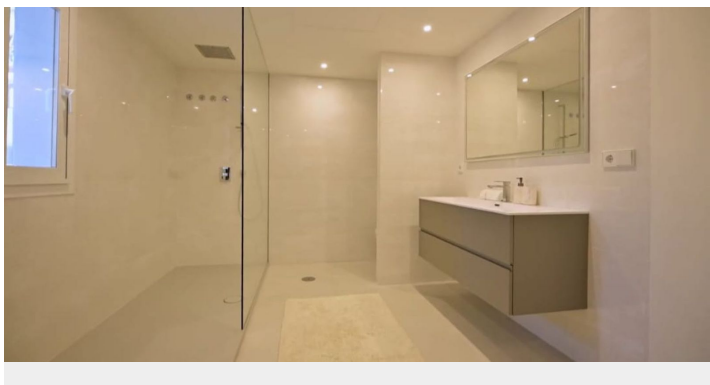
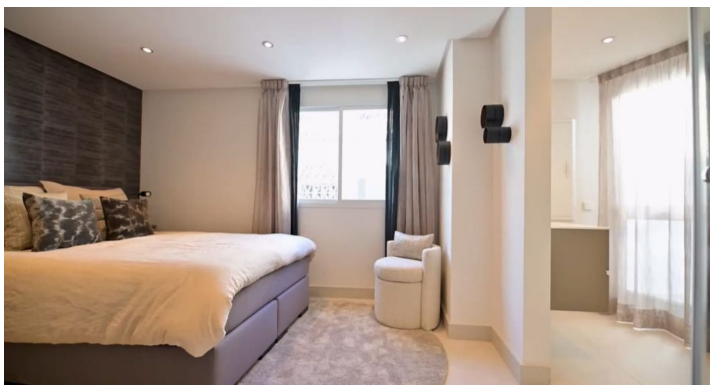
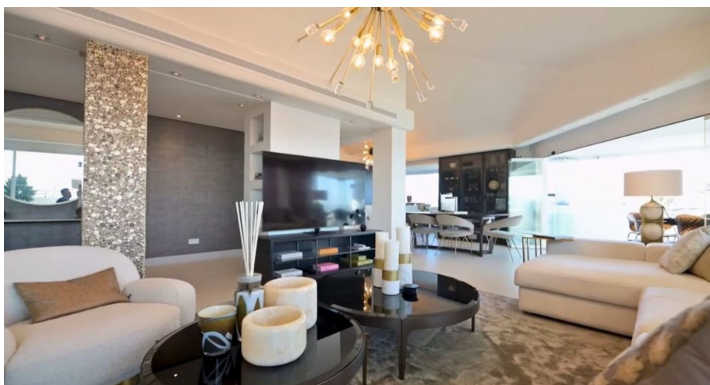
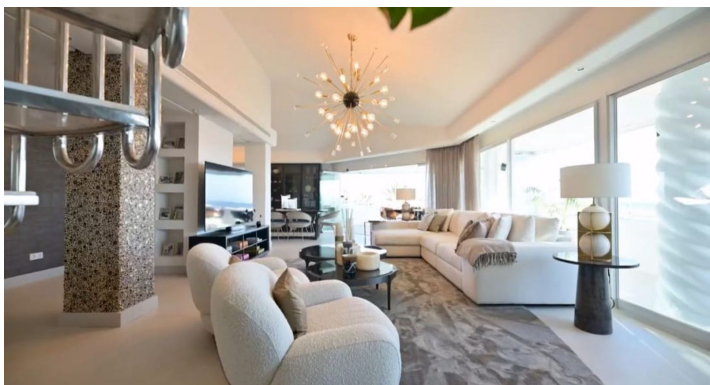
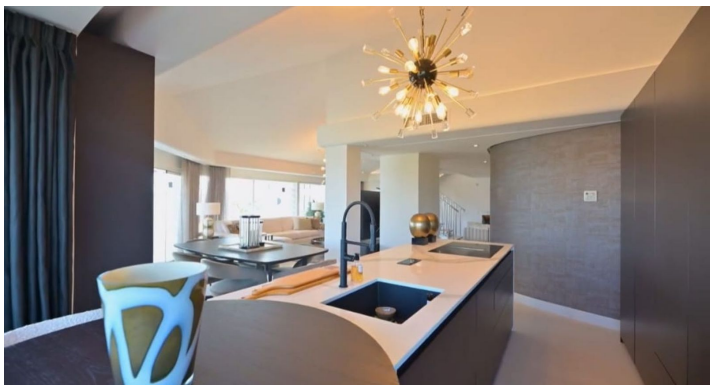
The location in Puerto Marina, Benalmádena, adds even more value to this magnificent home. As you will find here haute cuisine restaurants, luxury boutiques and entertainment options.

Welcome to book your viewings with us!

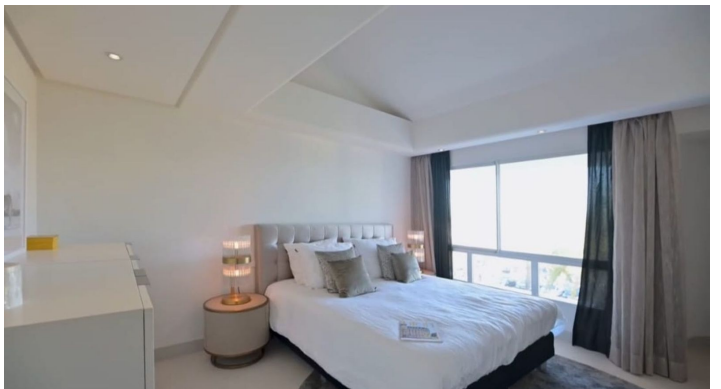
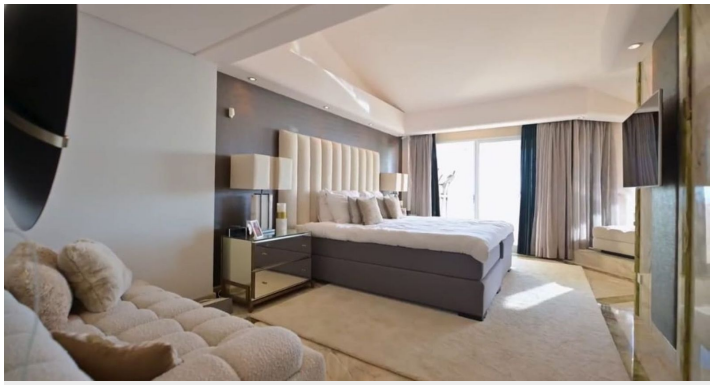
[View Property Online](#)

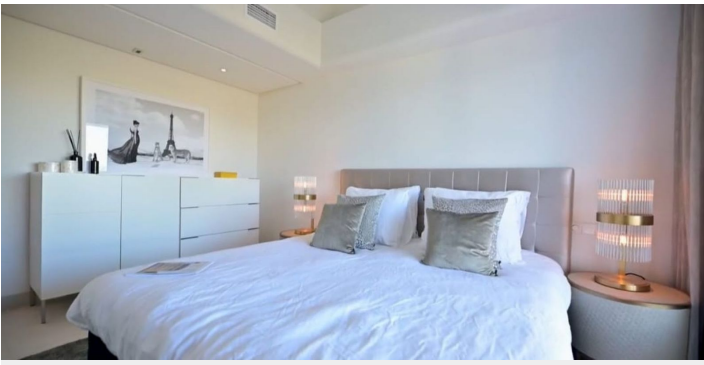


GALLERY









---

ViVi Real Estate | Calle Almendralejo de Jarales 5 Mijas Costa, 29640  
Tel: +34 672 816 975  
Email: [sales@vivi-realestate.com](mailto:sales@vivi-realestate.com) | Web: [www.vivi-realestate.com](http://www.vivi-realestate.com)