



Detached Villa in Benalmadena Pueblo

Price **€ 3,000,000**

Bedrooms	10
Bathrooms	10
Build Size	658 m²
Terrace	100 m²
Plot Size	3538 m²

SETTING

- ✓ Mountain Pueblo
- ✓ Close To Shops
- ✓ Close To Schools

ORIENTATION

- ✓ South

POOL

- ✓ Private

CLIMATE CONTROL

- ✓ Air Conditioning

VIEWS

- ✓ Sea
- ✓ Garden

FEATURES

- ✓ Fitted Wardrobes
- ✓ Marble Flooring

GARDEN

- ✓ Private

PARKING

- ✓ Garage
- ✓ More Than One

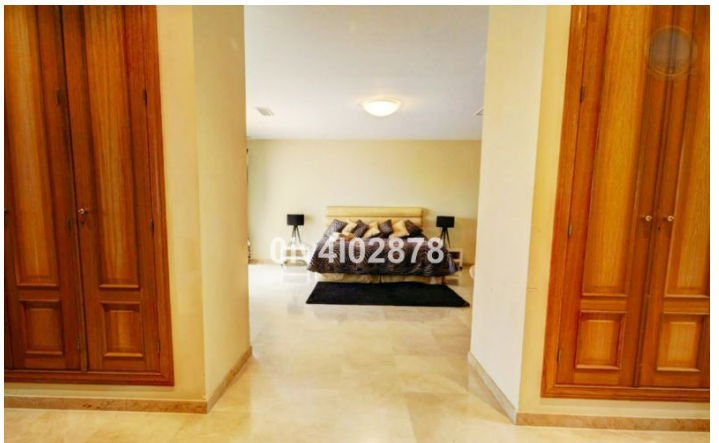
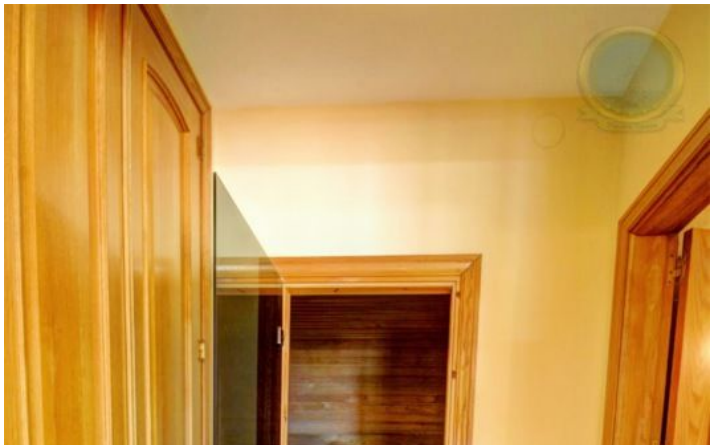
Special opportunity to acquire a very large property with separate outbuildings and very generous grounds, all within close proximity to the charming Pueblo of Benalmádena. Fitted with champagne marble finish and underfloor heating,facilitated by solar panels. On entering the grounds of the villa, one cant help but notice the established gardens and trees along with the charming outdoor areas surrounded by lovely views to country and sea. On entering the main house on ground floor there is a hall, which leads to large lounge-diner (access to terrace), formal independent dining room (access to terrace),cloakroom, independent kitchen (access to large patio/utility area, tv room, 2 bedrooms (one en suite and both with access to terrace). On upper floor, most bedrooms have access to main terrace. Very large main bedroom suite with lounge ,shower/bathroom, walk in wardrobe area, and sauna. Three further bedrooms,all with en suite bathrooms.

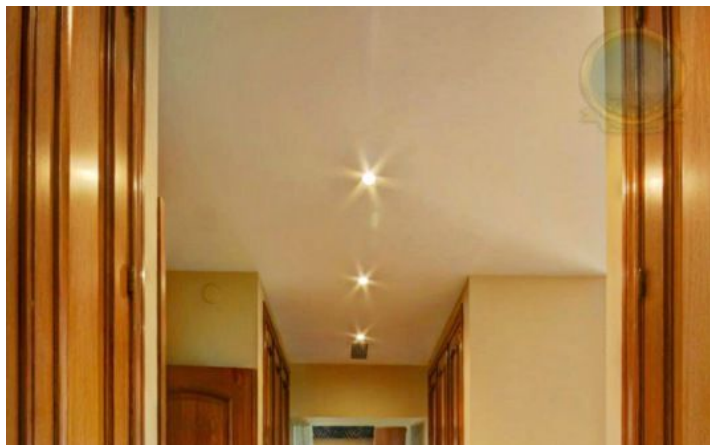
Outbuilding No1 : 3 bedroom independent house with 2 bathrooms, Outbuilding No2: independent 1 bed unit with bathroom. In addition there is an independent garage with storage room, a large swimming pool of 64m2, with adjacent porche area of 31m2. Further to this there are large grounds upon which there is probably sufficient space for a tennis court. Viewings are highly recommended!

[View Property Online](#)

GALLERY







Vivi Real Estate | Calle Almendralejo de Jarales 5 Mijas Costa, 29640
Tel: +34 672 816 975
Email: sales@vivi-realestate.com | Web: www.vivi-realestate.com