





# Detached Villa in Sotogrande

Price € 20,000,000

Bedrooms	16
Bathrooms	16
Build Size	2887 m²
Terrace	700 m²
Plot Size	54382 m²

SETTING

- ✓ Close To Golf
- ✓ Close To Schools
- ✓ Close To Port
- ✓ Close To Marina
- ✓ Close To Town

ORIENTATION

- ✓ South

CONDITION

- ✓ Recently Renovated

POOL

- ✓ Private
- ✓ Indoor
- ✓ Heated

CLIMATE CONTROL

- ✓ Air Conditioning
- ✓ Central Heating
- ✓ Fireplace

VIEWS

- ✓ Sea
- ✓ Garden
- ✓ Port
- ✓ Forest
- ✓ Country

FEATURES

- ✓ Covered Terrace
- ✓ Gym
- ✓ Guest Apartment
- ✓ Utility Room
- ✓ Lift
- ✓ Sauna
- ✓ Guest House
- ✓ Marble Flooring
- ✓ Private Terrace
- ✓ Tennis Court
- ✓ Storage Room
- ✓ Jacuzzi

FURNITURE

- ✓ Fully Furnished

KITCHEN

- ✓ Fully Fitted

GARDEN

- ✓ Private
- ✓ Landscaped

PARKING

- ✓ Garage
- ✓ More Than One

## CATEGORY

✓ Investment

✓ Luxury

✓ Reduced

Secure in its seclusion, this Palace is one of the most exceptional private residences of the Mediterranean Coast. In a peaceful setting in an exotic private park, the estate is located only three kilometres from the beach and close to world famous golf courses, polo grounds, marinas and international airports. Conceived and executed as an artistic entity, the Palace boasts extraordinary architectural and artistic detail, influenced by Italian Renaissance architecture, and giving the estate the effect of timelessness and serenity.

Extensive outdoor terraces with water features are connected by lush surrounding gardens and forests covering over 60.000 square meters (14.5 acres). The magnificent Neo-Classical reception rooms of the Main Residence are well proportioned, practical and relaxing in their splendour. Six of the bedrooms, including the Master Suite, are incorporated into a Tower overlooking the formal gardens, park, and countryside beyond. A separate cottage with three additional guest suites, is located at some distance from the Main House, surrounded by an exuberant and lush Romantic Garden.

The Palace has a Moorish section, reflecting the long and rich heritage of Moorish Spain. A magnificent Moorish Room, with a double cupola 9 metres high, and a set of jewel-like bedchambers above provide a refreshing contrast to the rest of the House. There is also an extensive section containing Moorish baths and other entertainment rooms.

There also is a separate guest house, staff quarters and workshop/storage facilities. Optional: Additional Urban land of 28.042 m2 to develop 140 Residences with 22.500m2 of total construction . Estimated time frame for building licence: 3 years .

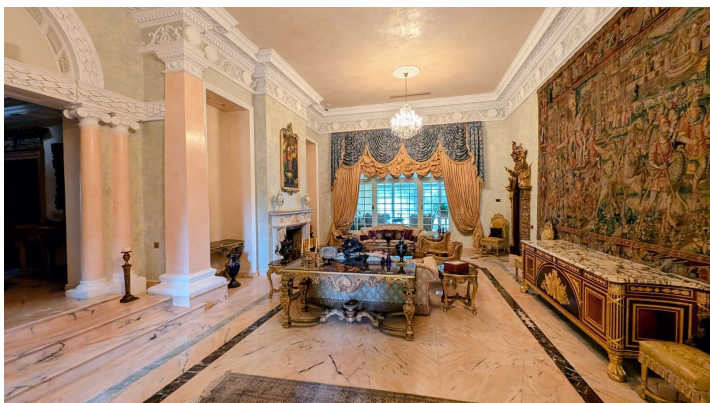
Additional 109.000m2 with a project of 80 Luxury Bungalows of latest ecological standard for 5\* Resort Hotel use. Concept: Total silence, live in nature, anti stress, anti aging, rehabilitation, retreat.

Plans and more extensive information upon request

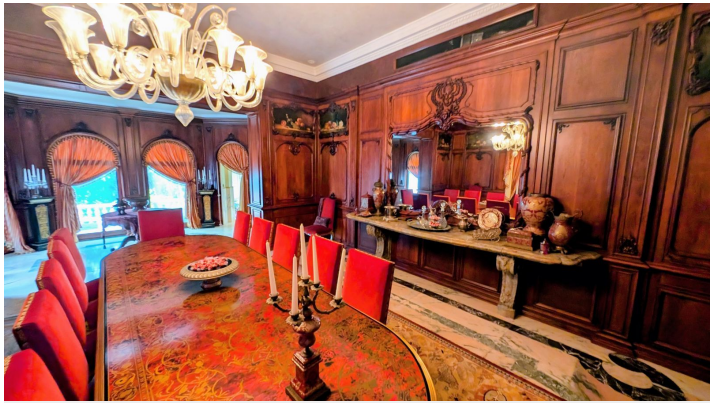
[View Property Online](#)



GALLERY











---

Vivi Real Estate | Calle Almendralejo de Jarales 5 Mijas Costa, 29640  
Tel: +34 672 816 975  
Email: [sales@vivi-realestate.com](mailto:sales@vivi-realestate.com) | Web: [www.vivi-realestate.com](http://www.vivi-realestate.com)