

# Townhouse in Riviera del Sol

Price **€ 1,475,815**

Bedrooms	3
Bathrooms	2
Build Size	268 - 387 m²
Terrace	140 - 291 m²

## SETTING

- ✓ Close To Golf
- ✓ Close To Shops
- ✓ Urbanisation

## ORIENTATION

- ✓ South

## CONDITION

- ✓ New Construction

## POOL

- ✓ Communal

## CLIMATE CONTROL

- ✓ Hot A/C
- ✓ Cold A/C
- ✓ U/F Heating

## VIEWS

- ✓ Sea
- ✓ Mountain
- ✓ Panoramic
- ✓ Garden
- ✓ Pool

## FEATURES

- ✓ Fitted Wardrobes
- ✓ Private Terrace
- ✓ Solarium
- ✓ Gym
- ✓ Games Room
- ✓ Storage Room
- ✓ Ensuite Bathroom
- ✓ Double Glazing
- ✓ Basement

## KITCHEN

- ✓ Fully Fitted

## GARDEN

- ✓ Communal

## SECURITY

- ✓ Gated Complex
- ✓ Electric Blinds
- ✓ Entry Phone

## PARKING

- ✓ Underground
- ✓ Garage
- ✓ Covered
- ✓ Private

## UTILITIES

- ✓ Electricity
- ✓ Drinkable Water
- ✓ Gas

## CATEGORY

✓ Off Plan

✓ New Development

---

New Development: Prices from €1,475,815 to €2,128,830. [Bedrooms: 3] [Bathrooms: 2] [Built size: 268m2 - 387m2]. This exclusive project with an elegant Scandinavian design blends harmoniously with the surrounding nature. The architecture of the townhouses follows seamlessly the undulating shapes of the waves.

### BEAUTY. PASSION. PERFECTION.

South facing unique energy efficient homes, with beautiful panoramic sea views and breathtaking sunsets, makes living here enjoyable and fun under the sun.

### THE HIGHEST STANDARD

All the materials are of the highest quality, with well-known brands, modern gourmet kitchens, designer bathrooms, underfloor heating in the whole house and high energy efficiency are details that make the difference.

Enjoy panoramic sea views and lovely sunsets on the roof top terrace of your new home.

The complex is next to a green area, which will be designed using beautiful trees and a little park where you can walk and enjoy the fresh sea breeze. The landscaping blends perfectly into the area.

### RIVIERA DEL SOL

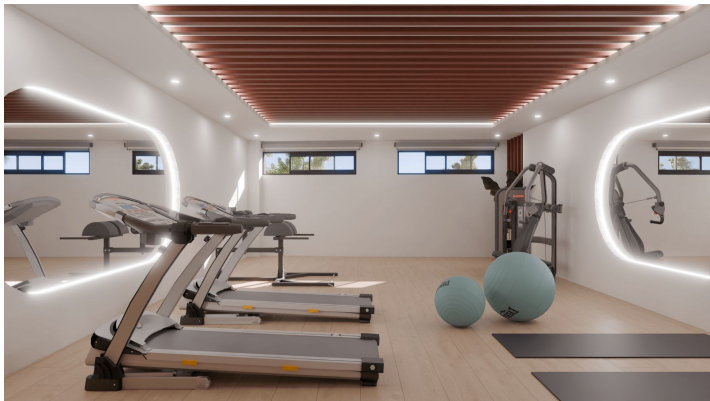
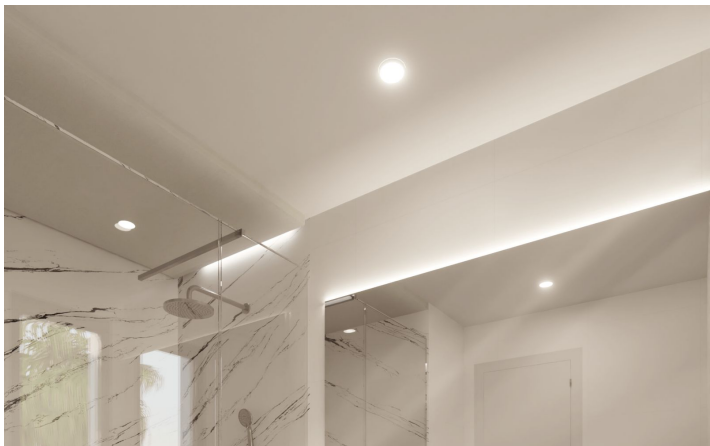
This charming area has everything you could ask for. A car always comes in handy for travelling to Marbella or Malaga. Located next to Marbella and just a 20 minutes drive to Puerto Banus.

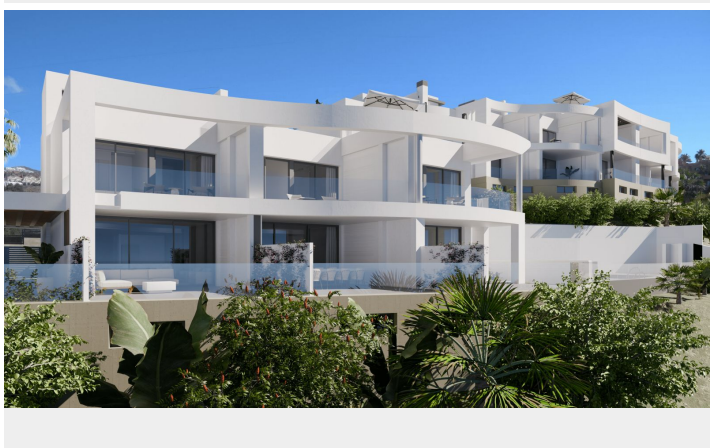
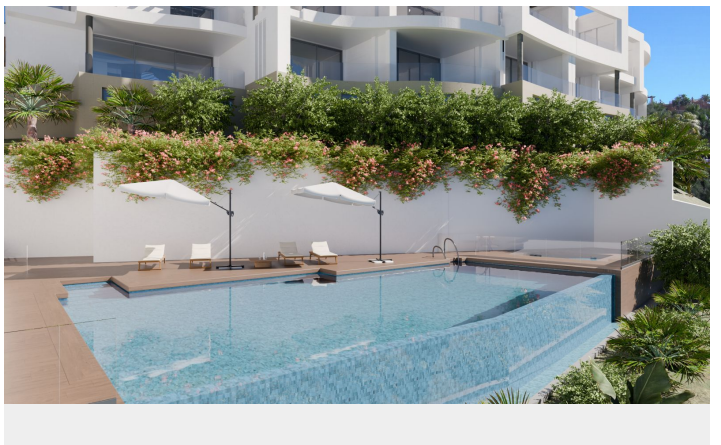
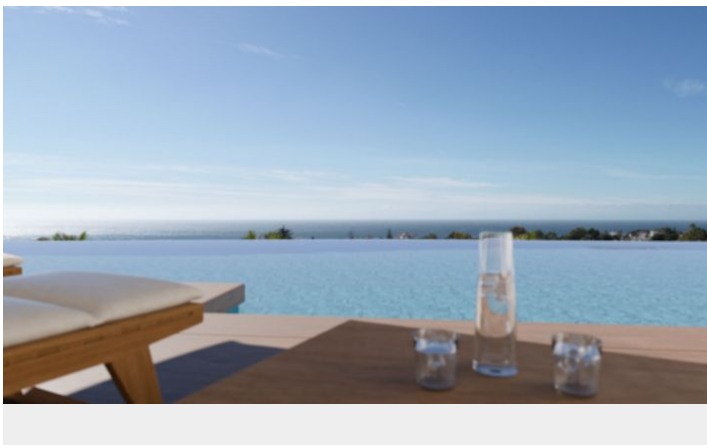
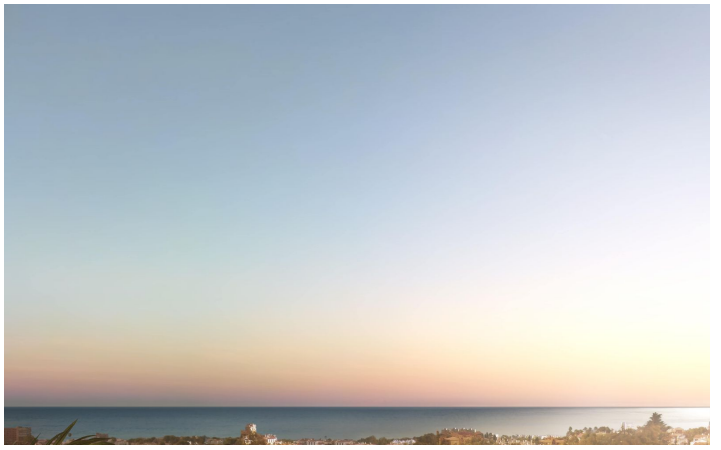
Airport is only 25 minutes away. The beach, Malaga and all nice restaurants are within easy reach. Plus, you have a golf course, tennis, padel and a childrens playground nearby.

[View Property Online](#)

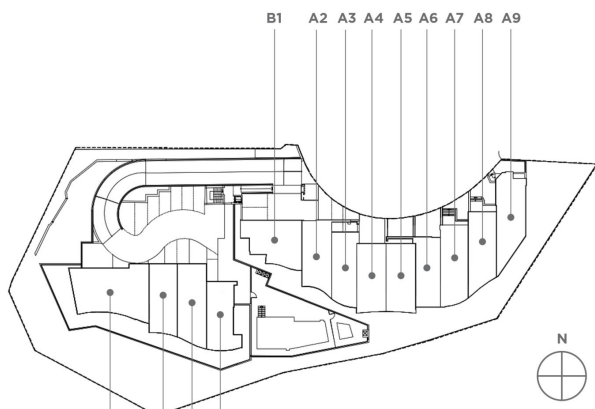


GALLERY









ViVi Real Estate | Calle Almendralejo de Jarales 5 Mijas Costa, 29640

Tel: +34 672 816 975

Email: [sales@vivi-realestate.com](mailto:sales@vivi-realestate.com) | Web: [www.vivi-realestate.com](http://www.vivi-realestate.com)