

Duplex in Aloha

Price € 630,000

Bedrooms	3
Bathrooms	2.5
Build Size	143 m²
Terrace	32 m²
Plot Size	175 m²

SETTING

- ✓ Commercial Area
- ✓ Close To Golf
- ✓ Close To Port
- ✓ Close To Shops
- ✓ Close To Sea
- ✓ Close To Schools
- ✓ Urbanisation

ORIENTATION

- ✓ East

CONDITION

- ✓ Renovation Required

POOL

- ✓ Communal
- ✓ Heated
- ✓ Children`s Pool

CLIMATE CONTROL

- ✓ Air Conditioning

VIEWS

- ✓ Mountain
- ✓ Panoramic

FEATURES

- ✓ Covered Terrace
- ✓ Fitted Wardrobes
- ✓ Near Transport
- ✓ Private Terrace
- ✓ Ensuite Bathroom
- ✓ Access for people with reduced mobility
- ✓ Double Glazing
- ✓ 24 Hour Reception

FURNITURE

- ✓ Fully Furnished

KITCHEN

- ✓ Fully Fitted

GARDEN

- ✓ Communal

SECURITY

- ✓ Gated Complex
- ✓ 24 Hour Security

PARKING

✓ Underground

CATEGORY

✓ Golf

✓ Holiday Homes

✓ Investment

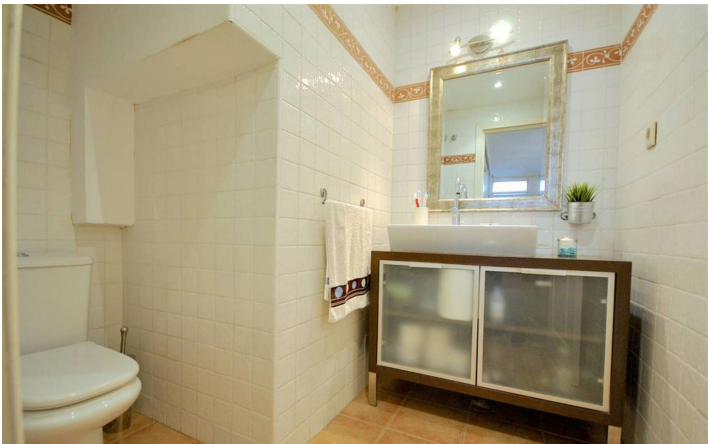
New on the market in the prestigious La Maestranza residential area in Aloha, a few minutes' walk from Puerto Banús and surrounded by all kinds of amenities.

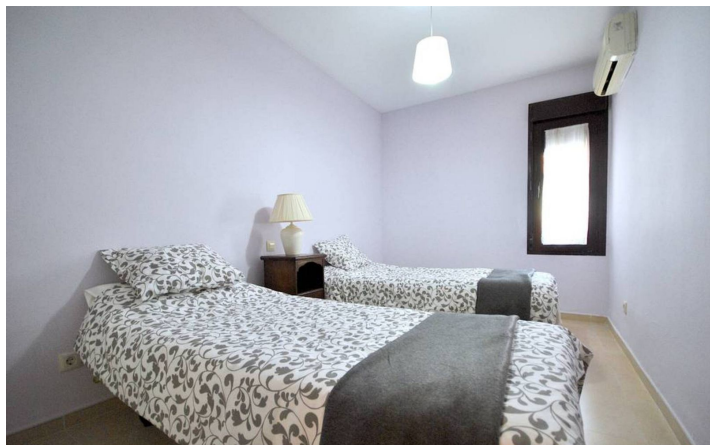
This fantastic ground floor duplex in its original condition, ideal for a renovation project, has a floor area of 143 square metres on two floors plus 32 square metres of terraces. On the ground floor there is a spacious living room, a toilet and the kitchen, which can be added to the living room or converted into a 4th bedroom. On the upper floor there are 3 spacious bedrooms, one of them with an en-suite bathroom and a terrace. This property has enormous potential for tourist rentals, as the development is in high demand among international clients due to its proximity to Puerto Banús and because, being a gated community with two swimming pools, it is an ideal location for both family tourism and golf enthusiasts. The property also has an underground parking space.

Do not hesitate to request a viewing.

[View Property Online](#)

GALLERY





Vivi Real Estate | Calle Almendralejo de Jarales 5 Mijas Costa, 29640
Tel: +34 672 816 975
Email: sales@vivi-realestate.com | Web: www.vivi-realestate.com