



Ground Floor Apartment in Estepona

Price € 725,000

Bedrooms	3
Bathrooms	3
Build Size	130 m ²
Plot Size	130 m ²

SETTING

- ✓ Beachside
- ✓ Close To Town
- ✓ Close To Schools

POOL

- ✓ Communal

CLIMATE CONTROL

- ✓ Air Conditioning

VIEWS

- ✓ Garden
- ✓ Pool

FEATURES

- ✓ Covered Terrace
- ✓ Fitted Wardrobes
- ✓ Near Transport
- ✓ Storage Room
- ✓ Double Glazing
- ✓ Restaurant On Site

FURNITURE

- ✓ Fully Furnished

Fully renovated and beautifully presented, this home immediately impresses with a welcoming entrance hall that leads to a spacious, separate kitchen with an adjoining laundry area. From here, you step into a bright and airy open-plan living and dining space, enhanced by large windows that open onto a generous wrap-around, south-facing terrace.

Partially covered, the terrace offers flexible outdoor living options—perfect for relaxing in the lounge area, enjoying al fresco dining, or soaking up the sun on loungers.

The master bedroom boasts an en-suite bathroom and direct access to the terrace, creating a private and tranquil retreat. Two additional bedrooms and two further bathrooms provide ample space for family and guests.

A practical storage room completes the property, adding to its overall comfort and convenience.

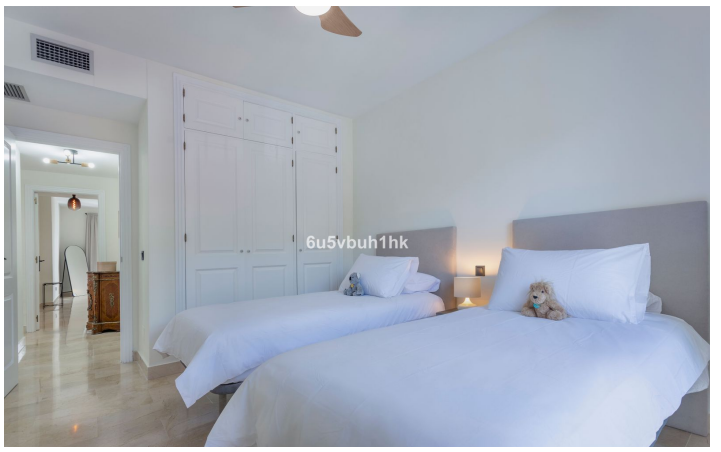
El Presidente is renowned for its beautifully maintained, spacious communal gardens, featuring three swimming pools, paddle courts, and numerous decorative fountains, creating a peaceful and resort-style living environment.

Located beachside on the prestigious New Golden Mile, this property enjoys an exceptional setting just a 10-minute drive from both Puerto Banús and Estepona. Luxury beach clubs are right on your doorstep, while a wide range of amenities, including shops, bars, restaurants, a supermarket, and a gym, are all within easy walking distance.

[View Property Online](#)

GALLERY







Vivi Real Estate | Calle Almendralejo de Jarales 5 Mijas Costa, 29640

Tel: +34 672 816 975

Email: sales@vivi-realestate.com | Web: www.vivi-realestate.com