

Middle Floor Apartment in Puerto Banús

Price € 749,000

Bedrooms	2
Bathrooms	2
Build Size	126 m ²
Plot Size	126 m ²

SETTING

- ✓ Suburban
- ✓ Close To Shops
- ✓ Close To Schools
- ✓ Beachside
- ✓ Close To Sea
- ✓ Close To Marina
- ✓ Close To Port
- ✓ Close To Town
- ✓ Urbanisation

ORIENTATION

- ✓ South West
- ✓ West

CONDITION

- ✓ Good

POOL

- ✓ Communal

CLIMATE CONTROL

- ✓ Air Conditioning
- ✓ Central Heating
- ✓ Hot A/C
- ✓ Cold A/C

VIEWS

- ✓ Sea
- ✓ Mountain
- ✓ Panoramic

FEATURES

- ✓ Covered Terrace
- ✓ Near Transport
- ✓ Paddle Tennis
- ✓ Marble Flooring
- ✓ Lift
- ✓ Private Terrace
- ✓ Utility Room
- ✓ Double Glazing
- ✓ Fitted Wardrobes
- ✓ WiFi
- ✓ Ensuite Bathroom
- ✓ 24 Hour Reception

KITCHEN

- ✓ Fully Fitted

SECURITY

- ✓ Gated Complex
- ✓ Entry Phone
- ✓ 24 Hour Security

PARKING

- ✓ Underground
- ✓ Garage
- ✓ Covered

UTILITIES

- ✓ Electricity
- ✓ Drinkable Water

CATEGORY

✓ Beachfront

✓ Holiday Homes

✓ Luxury

Just a two-minute walk from the beach, this apartment in Medina Garden, Puerto Banus, is the ideal place for a family vacation. This wonderful apartment can accommodate up to 5 people. It offers 2 bedrooms and 2 bathrooms, a well-equipped kitchen with a separate laundry room with a washing machine, a spacious living room, and a large terrace with dining and sitting areas with stunning sea and mountain views. It is not only the incredible views of Gibraltar and the African coast that give this apartment its privileged location, but the amazing views of the "Pueblos Blancos" at night, as their lights spread like a Bethlehem all over the mountains in the area. The southern Spanish climate makes this terrace the perfect place to sit with a glass of wine and some tapas in the evening, enjoy a cozy breakfast or brunch, or just relax with a good book with the sounds of the sea and seagulls in the background. The apartment has two elevators and a convenient underground parking space with direct access to the apartment. It also has central air conditioning.

The apartment is part of a quiet and very well-maintained community with tall subtropical trees and plants, Andalusian-style fountains, a large swimming pool with access to showers and toilets, and even a paddle tennis court.

It is amazing how this tranquil oasis can be so close to a myriad of amenities, just a stroll away. The Ocean Club (luxury day resort) is just across the street, as well as a walkway to the Puerto Banus boardwalk, which is only a five-minute walk from this Medina Garden apartment. The Marbella Casino is across the road, as well as a large open-air market that brings together hundreds of traders every Saturday. There is easy access to several pharmacies, supermarkets, and stores without the need to take the car. There is also public transportation in the area. The charming Old Town in Marbella centre is only a 10-minute drive away.

Indoor built area: 69m².

Terrace: 25m².

Parking space: 25m².

Storage room: 7m².

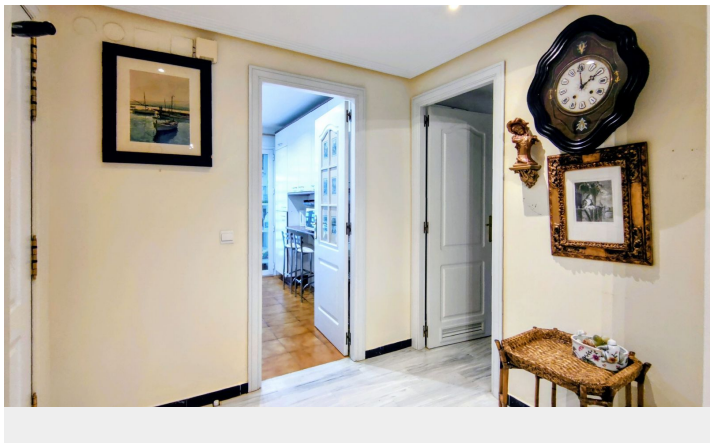
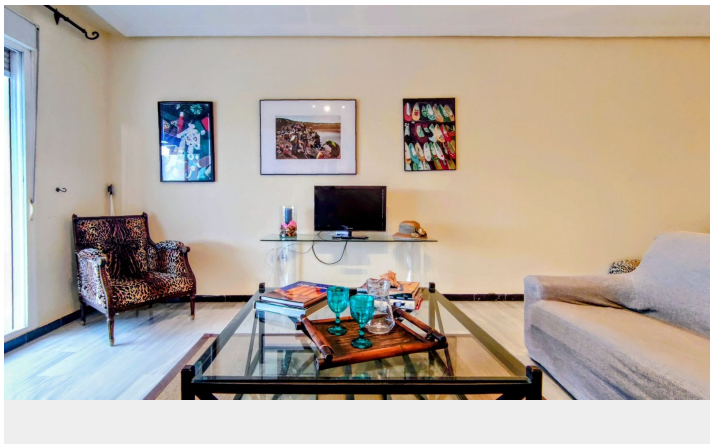
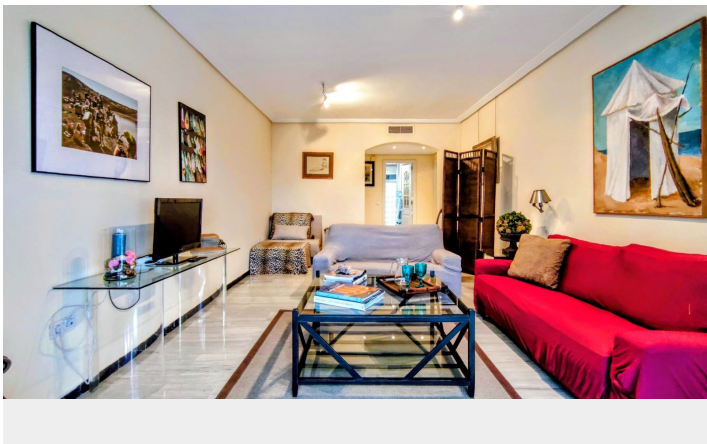
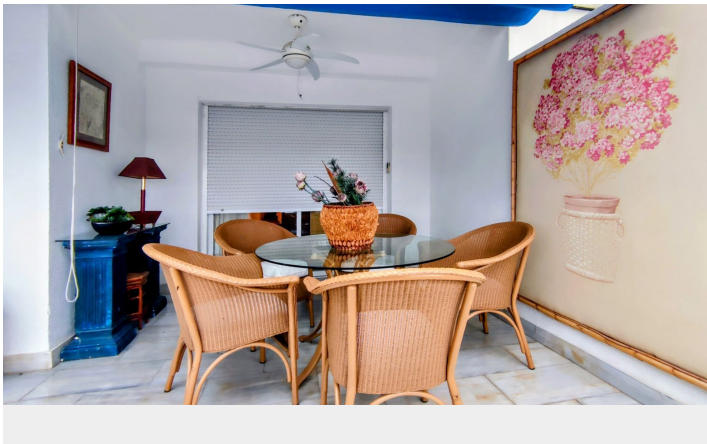
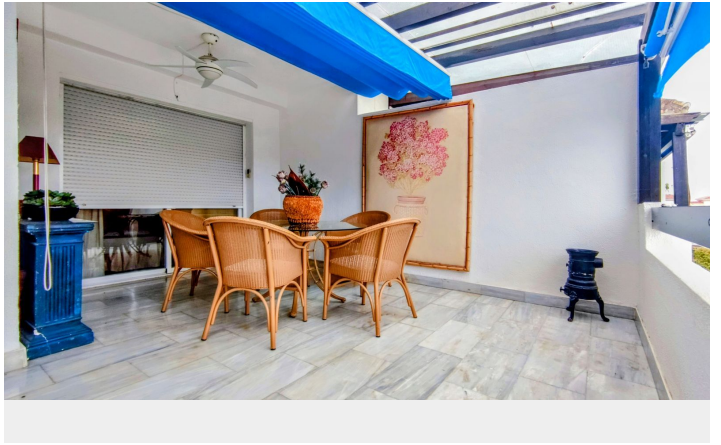
Total: 126m².

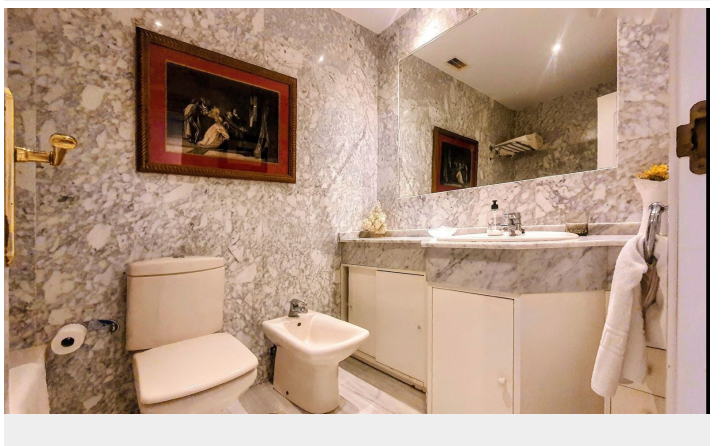
Community fees: €240 per month.

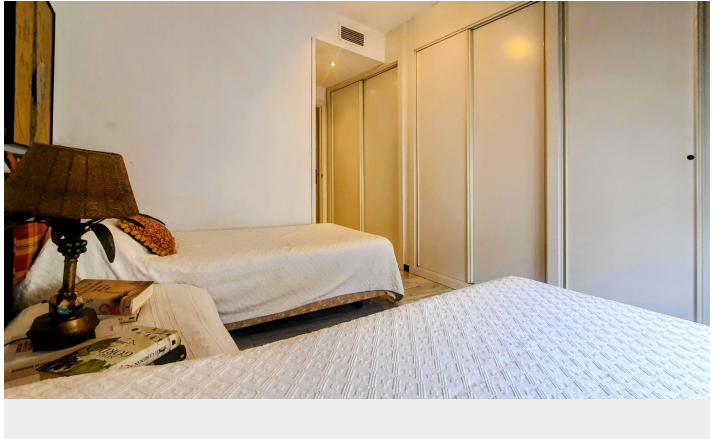
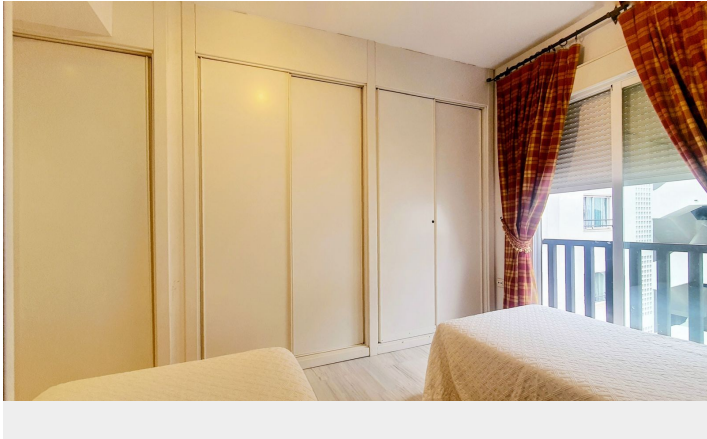
IBI fees: €590 per year.

[View Property Online](#)

GALLERY







Vivi Real Estate | Calle Almendralejo de Jarales 5 Mijas Costa, 29640

Tel: +34 672 816 975

Email: sales@vivi-realestate.com | Web: www.vivi-realestate.com