



Penthouse Duplex in San Pedro de Alcántara

Price € 769,000

Bedrooms	3
Bathrooms	2
Build Size	125 m ²
Terrace	81 m ²
Plot Size	206 m ²

SETTING

- ✓ Beachside
- ✓ Close To Shops
- ✓ Close To Schools

POOL

- ✓ Communal

CLIMATE CONTROL

- ✓ Air Conditioning
- ✓ Central Heating

VIEWS

- ✓ Mountain

FEATURES

- ✓ Covered Terrace
- ✓ Lift
- ✓ Fitted Wardrobes
- ✓ Near Transport
- ✓ Private Terrace
- ✓ Solarium
- ✓ Double Glazing

SECURITY

- ✓ Electric Blinds

This beautiful penthouse is located in one of the most desirable and up-and-coming areas of San Pedro Alcántara, just 700 metres from the beach and the Promenade that connects Puerto Banús and Marbella. A privileged location where everything is within walking distance - restaurants, shops, leisure areas - yet offering a peaceful and well-kept environment.

On the main floor, the property features a bright and spacious living-dining area with an open-plan contemporary kitchen, creating the perfect space to enjoy and entertain. This level also includes two bedrooms: the master suite, generous in size and with its own en-suite bathroom, and a second bedroom with a separate full bathroom that serves the rest of the home. From the main terrace, you can enjoy the sun and the relaxed coastal atmosphere all year round.

Upstairs, you'll find a large private solarium together with a third room, ideal as a guest bedroom, home office or chill-out area. A versatile space, perfect for unwinding, entertaining friends, or simply watching the sunset.

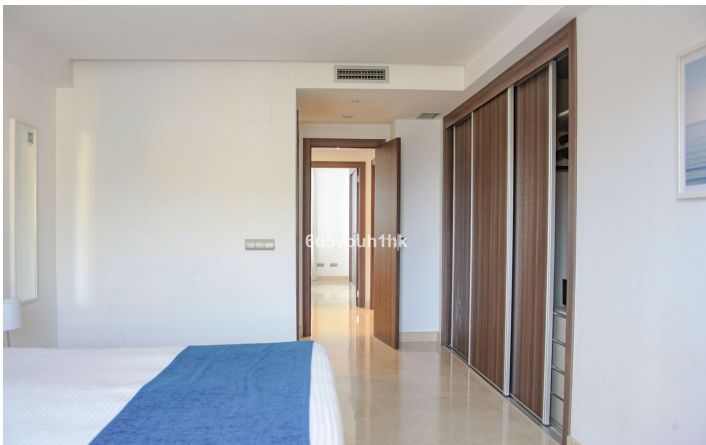
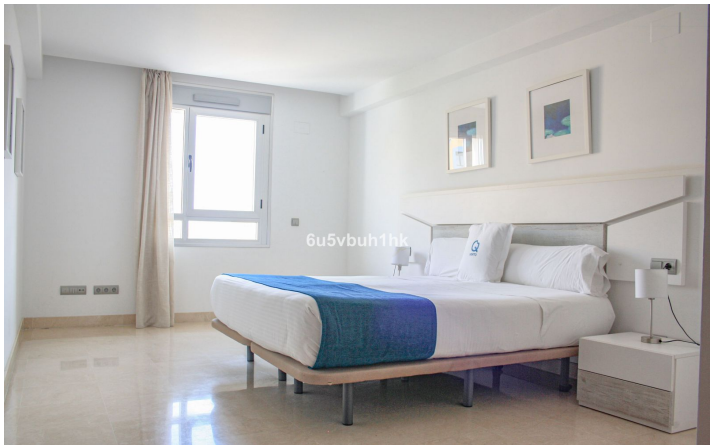
The complex offers a communal swimming pool and a serene atmosphere. In addition, the penthouse includes two parking spaces in the same building.

A home designed for those who value having everything close by, without giving up peace, privacy and the authentic Mediterranean lifestyle.

[View Property Online](#)

GALLERY







Vivi Real Estate | Calle Almendralejo de Jarales 5 Mijas Costa, 29640

Tel: +34 672 816 975

Email: sales@vivi-realestate.com | Web: www.vivi-realestate.com