



Detached Villa in Benahavís

Price € 5,150,000

Bedrooms	5
Bathrooms	6
Build Size	1174 m ²
Terrace	513 m ²
Plot Size	6368 m ²

SETTING

- ✓ Frontline Golf
- ✓ Close To Golf
- ✓ Town
- ✓ Close To Town
- ✓ Mountain Pueblo
- ✓ Urbanisation

ORIENTATION

- ✓ South

CONDITION

- ✓ Excellent
- ✓ New Construction

POOL

- ✓ Private

CLIMATE CONTROL

- ✓ Air Conditioning
- ✓ U/F Heating
- ✓ Hot A/C
- ✓ U/F/H Bathrooms
- ✓ Cold A/C

VIEWS

- ✓ Sea
- ✓ Panoramic
- ✓ Mountain
- ✓ Garden
- ✓ Country
- ✓ Pool

FEATURES

- ✓ Covered Terrace
- ✓ Sauna
- ✓ Private Terrace
- ✓ Gym

KITCHEN

- ✓ Fully Fitted

GARDEN

- ✓ Private

SECURITY

- ✓ Gated Complex
- ✓ 24 Hour Security

PARKING

- ✓ Garage
- ✓ Private

In the exclusive gated community of Benahavis, Marbella Club Golf Resort, stands a newly built contemporary villa offering captivating sea views. Boasting 24-hour security, a golf course, restaurant, and an equestrian center, this residence is crafted with premium materials, featuring an open-plan design, abundant natural light, double-height ceilings, and expansive windows.

The entrance level welcomes you with a spacious living room adorned with a stunning fireplace, complemented by book-matched marble. The open-plan layout seamlessly connects to the Gaggenau-equipped kitchen. Both areas have access to the terrace through pocket Schuco doors, providing panoramic views of the Mediterranean Sea, Gibraltar, and the Moroccan coastline on clear days. Additionally, this level features a small swimming pool separate from the main pool and garden.

On the right side of the entrance, two en-suite bedrooms and a garage, capable of accommodating 3-4 cars and a golf buggy, are located. Noteworthy is the garage's glass wall, allowing you to admire your collection from outside.

Ascending to the upper level, the main bedroom awaits with an en-suite bathroom, bathtub, shower, walk-in wardrobe, and a private terrace with magnificent views. A walkway overlooking the living room leads to two more en-suite bedrooms with terrace access.

Descending to the lower level, a versatile space serves as a laundry, wine cellar, or additional storage. The area also houses a cinema room and spa featuring a sauna, steam room, and shower. A guest toilet on this level provides access to the main garden, swimming pool area, and a covered outdoor kitchen.

Luxurious features abound throughout, including pocket doors, hot/cold air conditioning, underfloor heating, and an elevator connecting all floors. Nestled in one of the premier gated communities, Marbella Club Golf Resort ensures security with guards at the entrance and additional barriers on all streets. Villa Bentayga, the epitome of luxury living, enjoys the exclusivity of being in a private area with only two current villas and an additional gate.

[View Property Online](#)

GALLERY

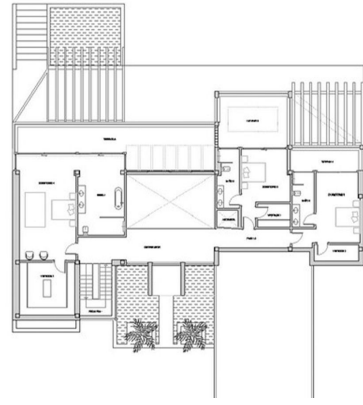




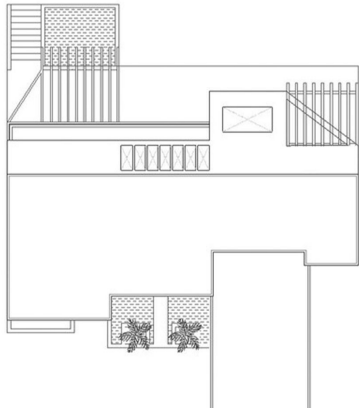
Room	Area (m ²)	Volume (m ³)
Living Room	30.00	10.00
Bedroom	20.00	6.67
Bathroom	10.00	3.33
Kitchen	15.00	5.00
Pool	10.00	3.33
Lawn	100.00	33.33
Stairs	5.00	1.67
Other	5.00	1.67
Total	195.00	65.00



RESUMEN DE CARACTERÍSTICAS	
Superficie Construida	1.200 m ²
Superficie Útil	1.000 m ²
Superficie Total	1.500 m ²
Planta	1
Planta	2
Planta	3
Planta	4
Planta	5
Planta	6
Planta	7
Planta	8
Planta	9
Planta	10
Planta	11
Planta	12
Planta	13
Planta	14
Planta	15
Planta	16
Planta	17
Planta	18
Planta	19
Planta	20
Planta	21
Planta	22
Planta	23
Planta	24
Planta	25
Planta	26
Planta	27
Planta	28
Planta	29
Planta	30
Planta	31
Planta	32
Planta	33
Planta	34
Planta	35
Planta	36
Planta	37
Planta	38
Planta	39
Planta	40
Planta	41
Planta	42
Planta	43
Planta	44
Planta	45
Planta	46
Planta	47
Planta	48
Planta	49
Planta	50
Planta	51
Planta	52
Planta	53
Planta	54
Planta	55
Planta	56
Planta	57
Planta	58
Planta	59
Planta	60
Planta	61
Planta	62
Planta	63
Planta	64
Planta	65
Planta	66
Planta	67
Planta	68
Planta	69
Planta	70
Planta	71
Planta	72
Planta	73
Planta	74
Planta	75
Planta	76
Planta	77
Planta	78
Planta	79
Planta	80
Planta	81
Planta	82
Planta	83
Planta	84
Planta	85
Planta	86
Planta	87
Planta	88
Planta	89
Planta	90
Planta	91
Planta	92
Planta	93
Planta	94
Planta	95
Planta	96
Planta	97
Planta	98
Planta	99
Planta	100



RESUMEN DE CARACTERÍSTICAS	
Superficie Construida	1.200 m ²
Superficie Útil	1.000 m ²
Superficie Total	1.500 m ²
Planta	1
Planta	2
Planta	3
Planta	4
Planta	5
Planta	6
Planta	7
Planta	8
Planta	9
Planta	10
Planta	11
Planta	12
Planta	13
Planta	14
Planta	15
Planta	16
Planta	17
Planta	18
Planta	19
Planta	20
Planta	21
Planta	22
Planta	23
Planta	24
Planta	25
Planta	26
Planta	27
Planta	28
Planta	29
Planta	30
Planta	31
Planta	32
Planta	33
Planta	34
Planta	35
Planta	36
Planta	37
Planta	38
Planta	39
Planta	40
Planta	41
Planta	42
Planta	43
Planta	44
Planta	45
Planta	46
Planta	47
Planta	48
Planta	49
Planta	50
Planta	51
Planta	52
Planta	53
Planta	54
Planta	55
Planta	56
Planta	57
Planta	58
Planta	59
Planta	60
Planta	61
Planta	62
Planta	63
Planta	64
Planta	65
Planta	66
Planta	67
Planta	68
Planta	69
Planta	70
Planta	71
Planta	72
Planta	73
Planta	74
Planta	75
Planta	76
Planta	77
Planta	78
Planta	79
Planta	80
Planta	81
Planta	82
Planta	83
Planta	84
Planta	85
Planta	86
Planta	87
Planta	88
Planta	89
Planta	90
Planta	91
Planta	92
Planta	93
Planta	94
Planta	95
Planta	96
Planta	97
Planta	98
Planta	99
Planta	100



ViVi Real Estate | Calle Almendralejo de Jarales 5 Mijas Costa, 29640
 Tel: +34 672 816 975
 Email: sales@vivi-realestate.com | Web: www.vivi-realestate.com