

# Semi-Detached House in Atalaya

Price € 749,000

Bedrooms	2
Bathrooms	2
Build Size	112 m <sup>2</sup>
Terrace	47 m <sup>2</sup>
Plot Size	159 m <sup>2</sup>

## SETTING

- ✓ Beachside
- ✓ Close To Port
- ✓ Close To Shops
- ✓ Close To Sea
- ✓ Close To Town
- ✓ Close To Schools

## CONDITION

- ✓ Excellent
- ✓ Recently Renovated

## CLIMATE CONTROL

- ✓ Air Conditioning

## VIEWS

- ✓ Sea
- ✓ Mountain
- ✓ Panoramic

## FEATURES

- ✓ Lift
- ✓ Fitted Wardrobes
- ✓ Near Transport
- ✓ Private Terrace
- ✓ Solarium
- ✓ Storage Room
- ✓ Wood Flooring
- ✓ Jacuzzi
- ✓ Double Glazing

## KITCHEN

- ✓ Partially Fitted
- ✓ Kitchen-Lounge

## SECURITY

- ✓ Electric Blinds

## PARKING

- ✓ Private

MODERN 3 BED FOR SALE OR RENT IN ATALAYA, ESTEPONA

Rent: €4,995/month | Sale: €745,000

Modern semi-detached villa in Atalaya, within easy reach of Atalaya Golf and El Paraíso Golf. The property is west-facing, set on a private plot, and includes private parking.

The main living space is open plan, combining kitchen, dining, and lounge, with direct access to a spacious terrace and open views over the surrounding area.

On the ground floor there is a guest bathroom. Upstairs, there are three bedrooms: a master bedroom with en-suite, a second bedroom with access to a terrace, and a third bedroom that shares a bathroom.

The house is equipped with underfloor heating and air conditioning powered by an aerothermal system, along with double-glazed aluminium windows and porcelain flooring throughout.

Residents have access to a communal swimming pool.

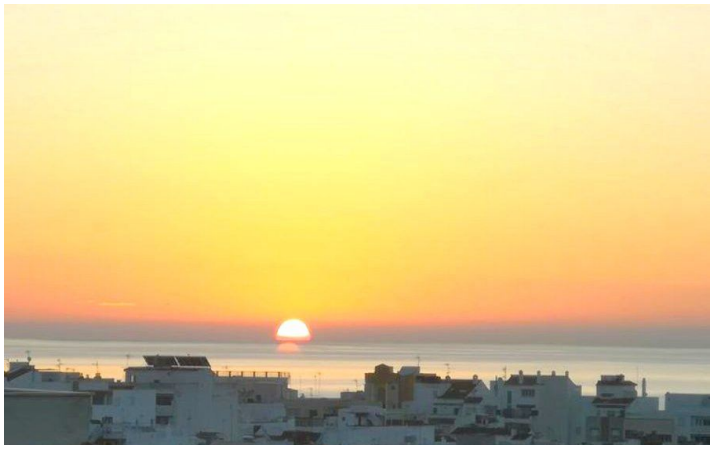
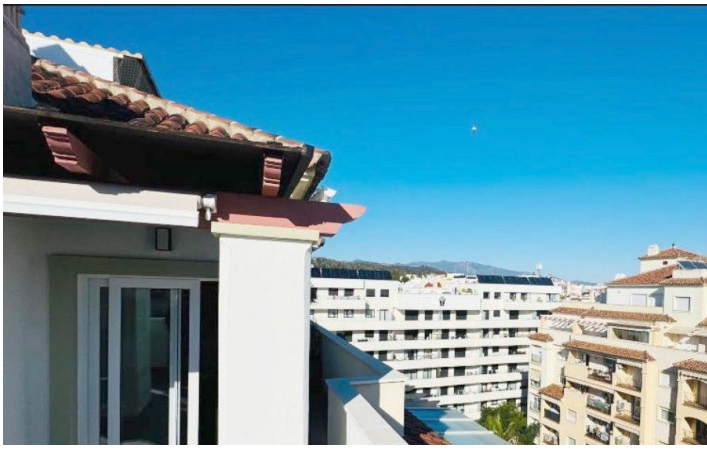
The location is convenient, around 2 km from shops and restaurants, 4 km from the beach, and 6 km from San Pedro, with easy connections to Marbella, Puerto Banús, and Estepona

[View Property Online](#)

# GALLERY







---

Vivi Real Estate | Calle Almendralejo de Jarales 5 Mijas Costa, 29640

Tel: +34 672 816 975

Email: [sales@vivi-realestate.com](mailto:sales@vivi-realestate.com) | Web: [www.vivi-realestate.com](http://www.vivi-realestate.com)