



Semi-Detached House in Nueva Andalucía

Price € 7,300,000

Bedrooms	4
Bathrooms	6
Build Size	610 m ²
Terrace	222 m ²
Plot Size	2332 m ²

SETTING

- ✓ Frontline Golf
- ✓ Village
- ✓ Close To Town
- ✓ Urbanisation
- ✓ Suburban
- ✓ Mountain Pueblo
- ✓ Close To Schools
- ✓ Country
- ✓ Close To Golf
- ✓ Close To Forest

ORIENTATION

- ✓ South
- ✓ South West

CONDITION

- ✓ Excellent
- ✓ New Construction

POOL

- ✓ Private
- ✓ Heated

CLIMATE CONTROL

- ✓ Air Conditioning
- ✓ Fireplace
- ✓ Hot A/C
- ✓ U/F Heating
- ✓ Cold A/C
- ✓ U/F/H Bathrooms

VIEWS

- ✓ Sea
- ✓ Panoramic
- ✓ Mountain
- ✓ Pool
- ✓ Country
- ✓ Forest

FEATURES

- ✓ Covered Terrace
- ✓ Private Terrace
- ✓ Storage Room
- ✓ Access for people with reduced mobility
- ✓ Double Glazing
- ✓ Restaurant On Site
- ✓ Near Church
- ✓ Lift
- ✓ Solarium
- ✓ Utility Room
- ✓ Bar
- ✓ Domotics
- ✓ Day Care
- ✓ Fiber Optic
- ✓ Fitted Wardrobes
- ✓ WiFi
- ✓ Ensuite Bathroom
- ✓ Barbeque
- ✓ 24 Hour Reception
- ✓ Stables

FURNITURE

- ✓ Fully Furnished
- ✓ Optional

KITCHEN

- ✓ Fully Fitted

GARDEN

- ✓ Private
- ✓ Landscaped
- ✓ Easy Maintenance

SECURITY

- ✓ Gated Complex
- ✓ Entry Phone
- ✓ Alarm System
- ✓ 24 Hour Security

PARKING

- ✓ Garage
- ✓ Covered
- ✓ Open
- ✓ More Than One
- ✓ Private
- ✓ EV charge point

UTILITIES

- ✓ Electricity
- ✓ Drinkable Water
- ✓ Telephone
- ✓ Photovoltaic solar panels
- ✓ Solar water heating

CATEGORY

- ✓ Golf
- ✓ Investment
- ✓ Luxury
- ✓ Off Plan
- ✓ With Planning Permission
- ✓ Contemporary

Contemporary Semi-Detached Villa in Atalaya Río Verde

Located in the prestigious Atalaya Río Verde community, this exceptional semi-detached villa combines contemporary design, premium finishes, and a superb location in one of Nueva Andalucía's most desirable residential areas. Just minutes from top golf courses, beaches, fine dining, Puerto Banús, and Aloha College, it offers an ideal balance of privacy, comfort, and convenience.

Completed in December 2023, the property spans 703 m² built, including 415 m² of interior living space, 288 m² of terraces, and a 92 m² private garden. Spread over four levels, connected by both staircase and private lift, the home is designed to maximize natural light and create a seamless indoor-outdoor lifestyle.

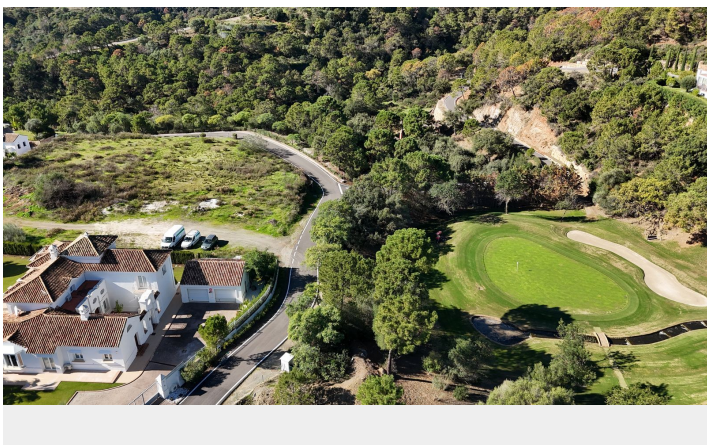
The entrance opens into an elegant hallway with water features, leading to a spacious open-plan living and dining area framed by floor-to-ceiling windows and extending onto a generous terrace. The designer kitchen, equipped with Gaggenau appliances, blends sleek aesthetics with practical functionality. An interior patio with a mature olive tree adds warmth and character to the living space.

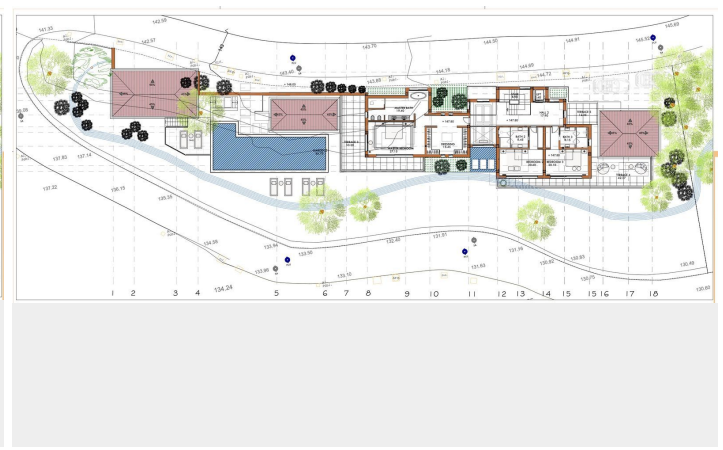
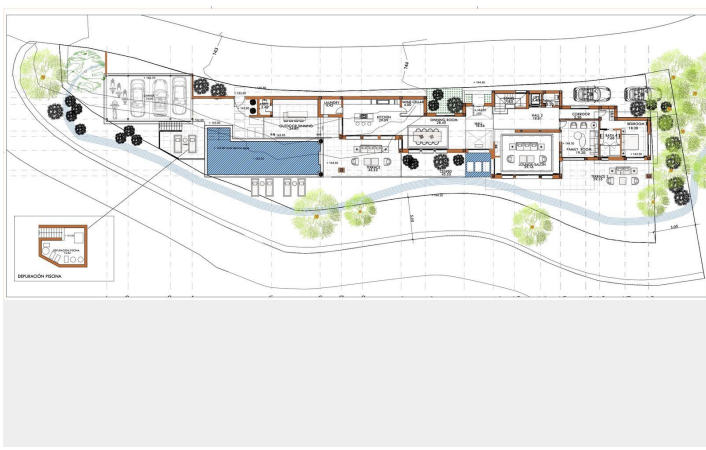
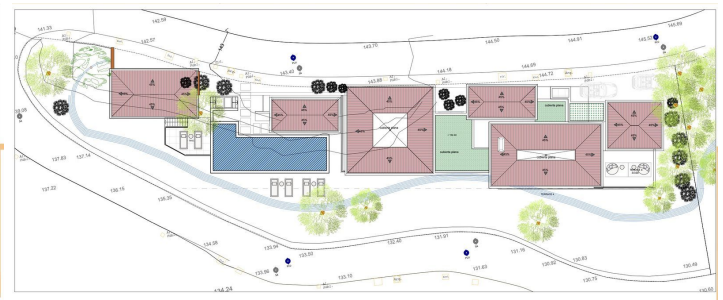
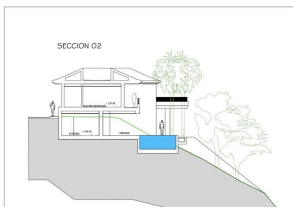
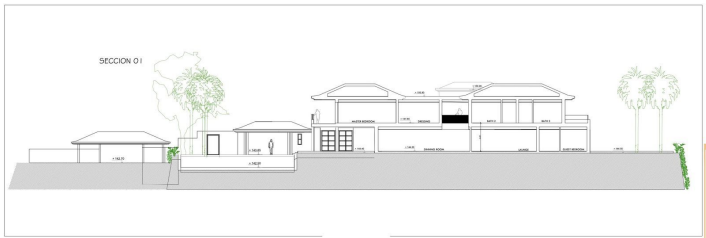
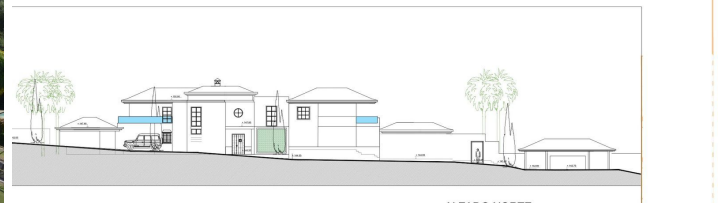
The first floor features three en-suite bedrooms with oak flooring, Porcelanosa marble finishes, and abundant natural light, including a luxurious principal suite with walk-in wardrobe and open views. The lower level offers a fourth bedroom and a private cinema, adding versatility and comfort for family living or entertaining.

Crowning the villa is a stunning rooftop solarium with a swimming pool, outdoor kitchen, and open-air cinema, enjoying panoramic views of the Mediterranean, La Concha, and the surrounding landscape. Fully furnished and decorated, with a private garage for three cars, security, communal pool, and landscaped gardens, this property represents a turnkey residence in one of Marbella's most sought-after locations.

[View Property Online](#)

GALLERY





Vivi Real Estate | Calle Almendralejo de Jarales 5 Mijas Costa, 29640

Tel: +34 672 816 975

Email: sales@vivi-realestate.com | Web: www.vivi-realestate.com