

Middle Floor Apartment in Benalmadena Pueblo

Price € 529,000

Bedrooms	3
Bathrooms	2
Build Size	111 m ²
Terrace	9 m ²
Plot Size	120 m ²

SETTING

- ✓ Close To Shops
- ✓ Close To Town
- ✓ Close To Schools

ORIENTATION

- ✓ South East
- ✓ South

CONDITION

- ✓ Excellent
- ✓ Good
- ✓ Recently Renovated
- ✓ Recently Refurbished

POOL

- ✓ Communal

CLIMATE CONTROL

- ✓ Air Conditioning

VIEWS

- ✓ Sea
- ✓ Mountain

FEATURES

- ✓ Covered Terrace
- ✓ Lift
- ✓ Fitted Wardrobes
- ✓ Near Transport
- ✓ Private Terrace
- ✓ Storage Room
- ✓ Ensuite Bathroom
- ✓ Double Glazing

KITCHEN

- ✓ Fully Fitted

GARDEN

- ✓ Communal

SECURITY

- ✓ Gated Complex
- ✓ Entry Phone

PARKING

- ✓ Underground
- ✓ Garage
- ✓ Covered
- ✓ Private

CATEGORY

✓ Holiday Homes

✓ Luxury

✓ Contemporary

FULLY RENOVATED CORNER APARTMENT with SEA VIEWS in Benalmádena Pueblo

Discover this fantastic corner property, completely refurbished using top-quality materials and featuring a modern, functional design, ready to move into. Located in one of the most sought-after areas of Benalmádena Pueblo, it perfectly combines tranquillity, comfort, and proximity to all amenities.

Prime location

Just 500 metres from the village centre, with bars, restaurants and shops only a short walk away. In addition, a fully equipped sports centre with gym, swimming pool and football pitches is just 200 metres away.

Outdoor spaces to enjoy

The property boasts a pleasant main terrace of 9 m², south-east facing, offering views of the sea and mountains. There is also a second covered terrace (8 m²), accessed from one of the bedrooms, currently used as a leisure area.

Quality and comfort

Fully refurbished, the apartment offers:

- Ducted air conditioning throughout
- Fitted wardrobes
- Excellent layout and natural light
- Modern design
- Open-plan kitchen with island
- En-suite bathroom

INCLUDES PRIVATE GARAGE

Underground garage included in the price.

Communal areas

The residential complex features a communal swimming pool and well-maintained gardens, ideal for relaxing and enjoying the Costa del Sol's climate.

Layout

Entrance hall, bathroom, kitchen and a spacious living-dining room with access to the main terrace. From the living room, a hallway leads to bedroom 2, bedroom 3 with a private terrace and the master bedroom with en-suite bathroom.

Key details

Built size: 111 m²

Terraces: 9 m² + 8 m²

Floor: 1st (building with only 2 floors)

Orientation: South-east

Year of construction: 2004

Rubbish tax: €172/year

Distances

-School: 20 m

-Restaurants and bars: 100 m

-Bus stop: 200 m

-Sports centre: 200 m

-Benalmádena Pueblo centre: 500 m

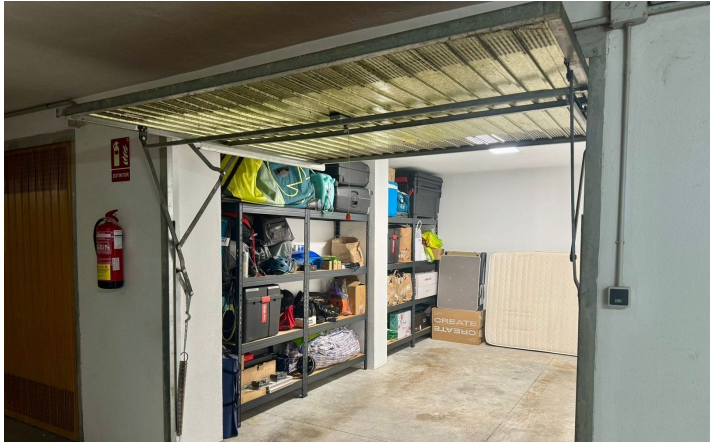
-Airport: 15.2 km

[View Property Online](#)

GALLERY







ViVi Real Estate | Calle Almendralejo de Jarales 5 Mijas Costa, 29640

Tel: +34 672 816 975

Email: sales@vivi-realestate.com | Web: www.vivi-realestate.com