



Penthouse in Benahavís

Price € 535,000

Bedrooms	3
Bathrooms	2
Build Size	97 m ²
Terrace	157 m ²
Plot Size	254 m ²

SETTING

- ✓ Mountain Pueblo
- ✓ Urbanisation
- ✓ Close To Golf
- ✓ Close To Forest

ORIENTATION

- ✓ South

CONDITION

- ✓ Excellent

POOL

- ✓ Communal

CLIMATE CONTROL

- ✓ Air Conditioning

FEATURES

- ✓ Fitted Wardrobes
- ✓ Double Glazing
- ✓ Private Terrace
- ✓ Ensuite Bathroom

FURNITURE

- ✓ Fully Furnished

KITCHEN

- ✓ Fully Fitted

GARDEN

- ✓ Communal

PARKING

- ✓ Communal

CATEGORY

- ✓ Golf
- ✓ Holiday Homes
- ✓ Investment

Duplex Penthouse with Large Solarium and Panoramic Views in Los Arqueros, Benahavís

Located in the prestigious and peaceful urbanisation of Los Arqueros, Benahavís, this elegant duplex penthouse offers privacy, spacious living, and beautiful open views of the natural surroundings and hills.

The property features 97 m² of built area distributed over two levels, offering a comfortable layout with 3 bedrooms and 2 bathrooms, making it ideal as a permanent residence or holiday home.

The bright living and dining area connects seamlessly with the outdoor spaces, creating a warm and naturally bright atmosphere. One of the property's standout features is its spectacular 157 m² private solarium, perfect for enjoying the Mediterranean climate, creating a chill-out area, or simply relaxing while taking in the panoramic views.

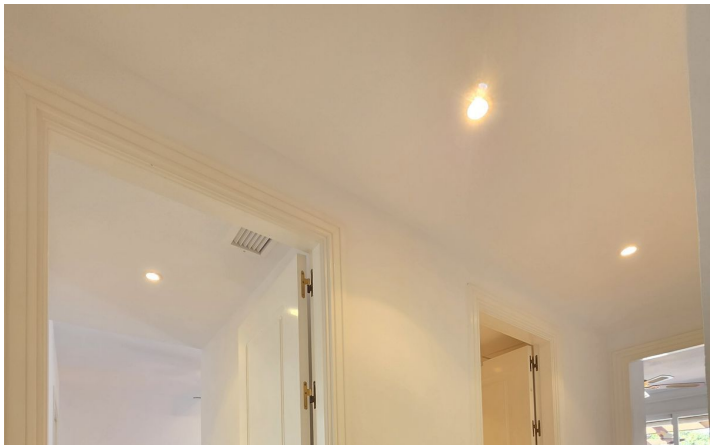
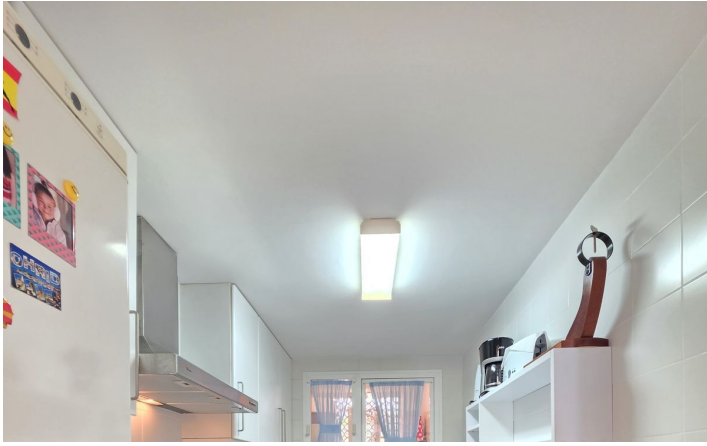
The property also benefits from an assigned communal parking space and is part of a well-maintained residential complex with communal swimming pool and landscaped gardens, all set within a quiet natural environment.

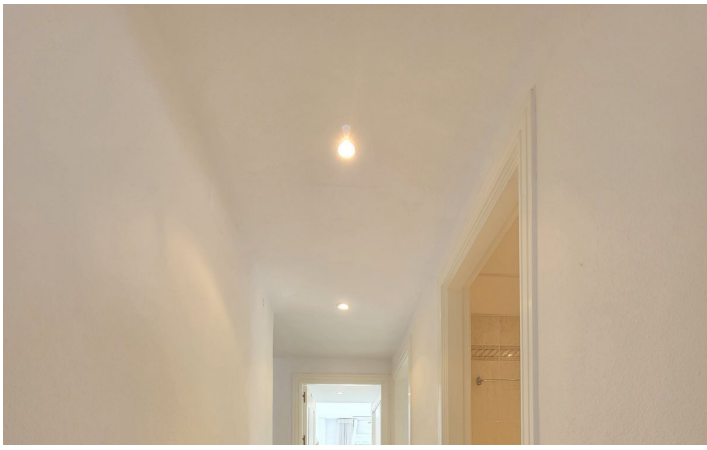
Ideally located just minutes from golf courses, amenities, restaurants, and San Pedro de Alcántara, this penthouse is an excellent opportunity to enjoy the Costa del Sol lifestyle.

[View Property Online](#)

GALLERY







Vivi Real Estate | Calle Almendralejo de Jarales 5 Mijas Costa, 29640

Tel: +34 672 816 975

Email: sales@vivi-realestate.com | Web: www.vivi-realestate.com