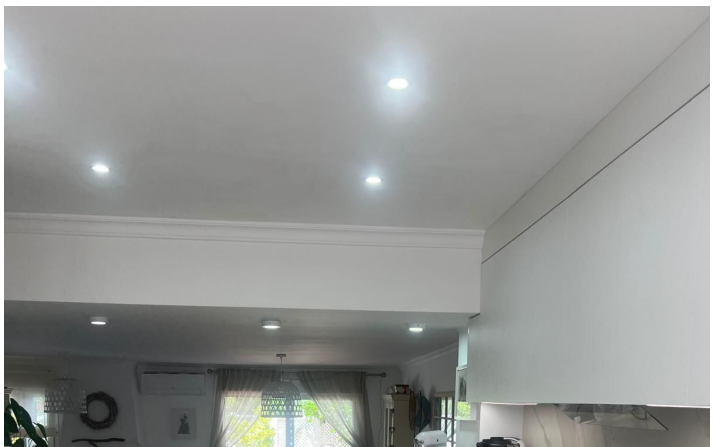
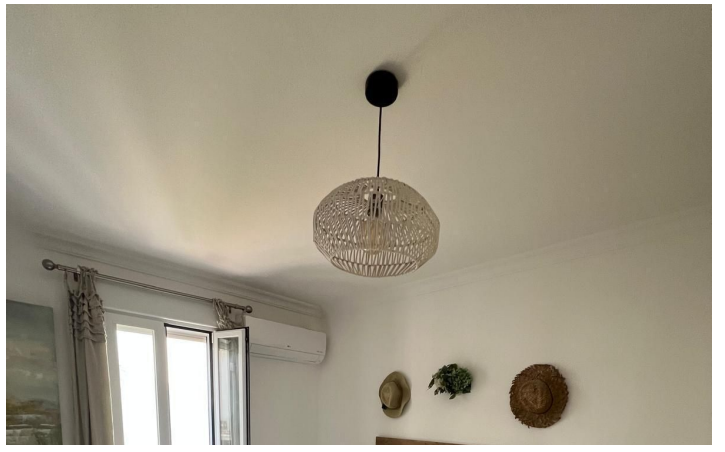


Reference: R5412481



WWW.VIVI-REALESTATE.COM
WWW.VIVI-HOMES.COM





Penthouse in La Cala Golf

Price € 670,000

Bedrooms	3
Bathrooms	3
Build Size	147 m ²
Terrace	40 m ²
Plot Size	187 m ²

SETTING

- ✓ Beachfront
- ✓ Close To Shops
- ✓ Close To Schools
- ✓ Beachside
- ✓ Close To Sea
- ✓ Urbanisation
- ✓ Close To Golf
- ✓ Close To Town
- ✓ Front Line Beach Complex

ORIENTATION

- ✓ South
- ✓ West

CONDITION

- ✓ Excellent
- ✓ Recently Renovated
- ✓ Recently Refurbished

POOL

- ✓ Communal

CLIMATE CONTROL

- ✓ Air Conditioning
- ✓ Fireplace

VIEWS

- ✓ Garden
- ✓ Courtyard

FEATURES

- ✓ Covered Terrace
- ✓ Private Terrace
- ✓ Storage Room
- ✓ Marble Flooring
- ✓ Fiber Optic
- ✓ Fitted Wardrobes
- ✓ Solarium
- ✓ Utility Room
- ✓ Barbeque
- ✓ Near Transport
- ✓ WiFi
- ✓ Ensuite Bathroom
- ✓ Double Glazing

FURNITURE

- ✓ Not Furnished

KITCHEN

- ✓ Fully Fitted

GARDEN

- ✓ Communal
- ✓ Private

SECURITY

- ✓ Gated Complex

PARKING

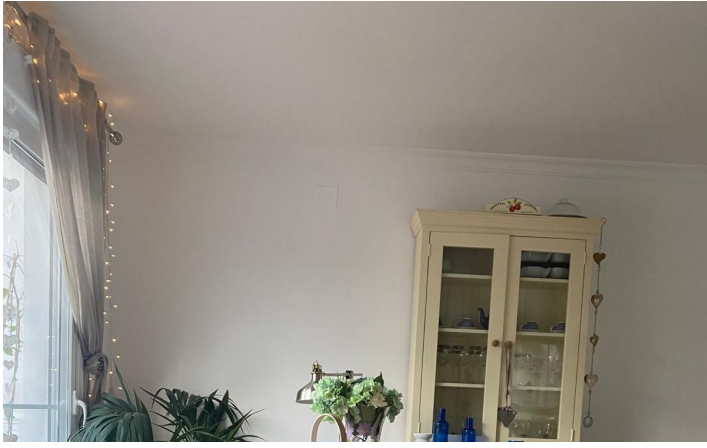
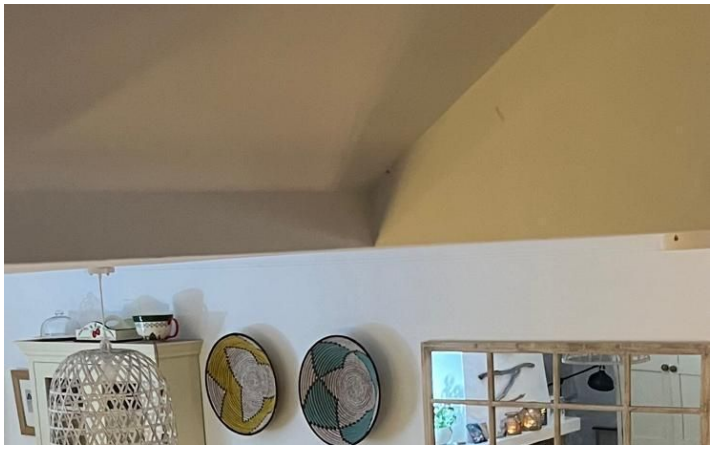
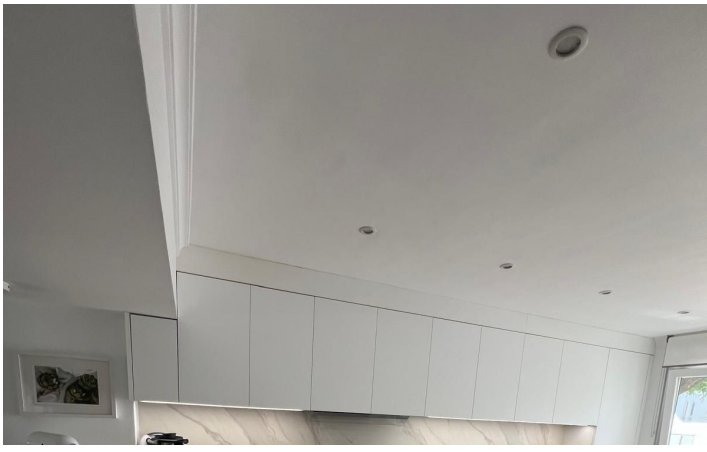
✓ Communal

- Contemporary penthouse with 3 bedrooms & 2 bathrooms.
- One-level design with main living areas and guest room flowing out to a beautiful terrace overlooking the sea.
- Exclusive roof terrace complementing the main terrace with its own private outdoor chill-out area.
- Fantastic open concept kitchen that includes a modern island and an independant laundry room.
- Bright living & dining room, naturally connected to the amazing terrace.
- Spacious main bedroom with large fitted wardrobes, electric shutters and a fabulous en-suite bathroom.
- 2 Double guest bedrooms offering electric shutters and fitted wardrobes.
- The property includes 2 underground garage spaces and a storage room in the basement of the building.
- Gated community with swimming pool for the exclusive use of residents.

[View Property Online](#)

GALLERY







Vivi Real Estate | Calle Almendralejo de Jarales 5 Mijas Costa, 29640

Tel: +34 672 816 975

Email: sales@vivi-realestate.com | Web: www.vivi-realestate.com