

Penthouse Duplex in Benalmadena

Price € 550,000

Bedrooms	2
Bathrooms	2
Build Size	75 m ²
Terrace	61 m ²
Plot Size	136 m ²

SETTING

- ✓ Close To Golf
- ✓ Close To Schools
- ✓ Close To Shops
- ✓ Urbanisation
- ✓ Close To Town

ORIENTATION

- ✓ West

CONDITION

- ✓ Excellent

POOL

- ✓ Communal

CLIMATE CONTROL

- ✓ Air Conditioning
- ✓ Hot A/C
- ✓ Cold A/C

VIEWS

- ✓ Sea
- ✓ Pool
- ✓ Mountain
- ✓ Country

FEATURES

- ✓ Lift
- ✓ Solarium
- ✓ Storage Room
- ✓ Fiber Optic
- ✓ Fitted Wardrobes
- ✓ WiFi
- ✓ Ensuite Bathroom
- ✓ Private Terrace
- ✓ Gym
- ✓ Double Glazing

FURNITURE

- ✓ Part Furnished

KITCHEN

- ✓ Fully Fitted

GARDEN

- ✓ Communal

SECURITY

- ✓ Gated Complex
- ✓ Electric Blinds
- ✓ Entry Phone

PARKING

- ✓ Underground

UTILITIES

- ✓ Electricity
- ✓ Drinkable Water
- ✓ Telephone

CATEGORY

- ✓ Holiday Homes
- ✓ Investment
- ✓ Resale
- ✓ Contemporary

Exclusive duplex penthouse with panoramic sea and mountain views in Benalmádena, Costa del Sol!

It stands out for its spaciousness, privacy and extraordinary outdoor areas, set within one of the most highly regarded and well-established residential complexes in the area.

The property has a built area of 94.22 m², plus 77.38 m² of the two main terraces and 65 m² of private solarium, giving a total usable area of 236 m².

It comprises 2 bedrooms and 2 full bathrooms. The master bedroom features an en-suite bathroom with a jacuzzi and a walk-in wardrobe, whilst the second bedroom opens directly onto a private terrace with lovely unobstructed views.

The separate kitchen enjoys plenty of natural light and is a functional space designed for everyday living. The living-dining room connects directly to a spacious main terrace, divided into two distinct areas: an outdoor area with a storage room and barbecue area, and a covered area enclosed by glass panels, currently fitted out as an elegant chill-out space, ideal for enjoying at any time of year.

As a major added bonus, the property offers a spectacular private sun terrace of 65 m², accessible via an external staircase. A true space for leisure and relaxation, it includes an area with sun loungers, a drinks bar, a fridge and a covered area with wooden cladding where an inflatable hot tub has been installed, creating the perfect setting for unwinding or entertaining guests.

Also included are two large parking spaces in a row, totalling 56 m², and two spacious storage rooms, providing a highly valuable extra in terms of convenience and storage.

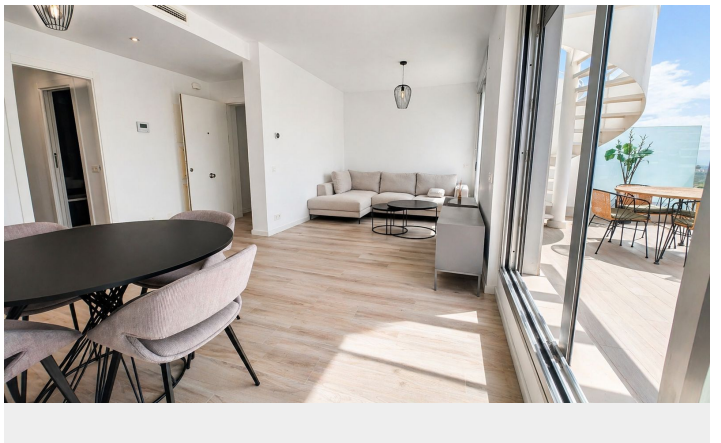
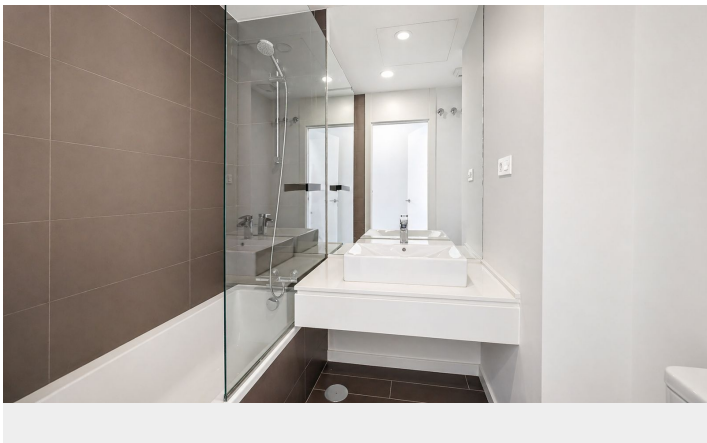
One of the most well-equipped and sought-after residential developments in Benalmádena, surrounded by extensive green spaces and swimming pools. Just a few metres away is the Pitch & Putt golf course, a social club with a restaurant and café, a gym, padel and tennis courts, as well as a range of sports and leisure activities available all year round. Excellent location next to Vithas Xanit Hospital and with easy access to the motorway

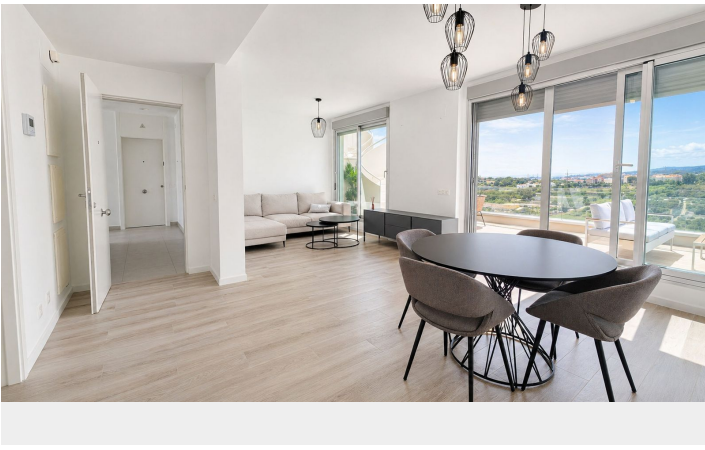
A rare find on the market due to its spacious terraces, privacy and fittings, ideal as a main residence, a second home or an investment property.

[View Property Online](#)

GALLERY







ViVi Real Estate | Calle Almendralejo de Jarales 5 Mijas Costa, 29640

Tel: +34 672 816 975

Email: sales@vivi-realestate.com | Web: www.vivi-realestate.com