

Semi-Detached House in Mijas

Price € 524,700

Bedrooms	4
Bathrooms	3
Build Size	140 m ²
Plot Size	140 m ²

SETTING

- ✓ Urbanisation

ORIENTATION

- ✓ South East
- ✓ South

CONDITION

- ✓ Excellent

POOL

- ✓ Communal

VIEWS

- ✓ Sea
- ✓ Beach
- ✓ Garden
- ✓ Pool
- ✓ Urban

FEATURES

- ✓ Covered Terrace
- ✓ Fitted Wardrobes
- ✓ Private Terrace
- ✓ Paddle Tennis
- ✓ Tennis Court

FURNITURE

- ✓ Fully Furnished

KITCHEN

- ✓ Fully Fitted

GARDEN

- ✓ Communal

SECURITY

- ✓ 24 Hour Security

PARKING

- ✓ Open

UTILITIES

- ✓ Electricity
- ✓ Drinkable Water
- ✓ Telephone
- ✓ Gas

CATEGORY

✓ Resale

Elegant Semi-Detached House with Sea Views and Spacious Terraces in Mijas Costa

Located within a well-maintained residential community just minutes from the beach, this bright semi-detached home offers an excellent combination of space, comfort, and quality of life on the Costa del Sol.

The property is distributed over two levels and features a spacious living and dining area, a large kitchen with room for everyday dining, four bedrooms, two full bathrooms, and a guest toilet. The master bedroom benefits from an en-suite bathroom and pleasant sea views.

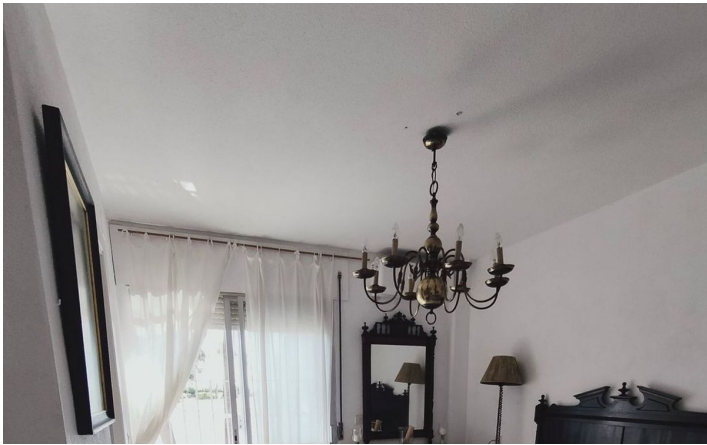
One of the property's main highlights is its outdoor space, including a generous main terrace of approximately 60 m² and an additional terrace, perfect for enjoying the Mediterranean climate throughout the year.

Residents have access to excellent communal facilities, including swimming pools, tennis and paddle courts, landscaped gardens, and leisure areas designed for the enjoyment of the whole family.

Thanks to its prime location close to the beach, restaurants, services, and major transport links, this property is an ideal choice as a permanent residence, holiday home, or investment opportunity in one of the most sought-after areas of Mijas Costa.

[View Property Online](#)

GALLERY





ViVi Real Estate | Calle Almendralejo de Jarales 5 Mijas Costa, 29640

Tel: +34 672 816 975

Email: sales@vivi-realestate.com | Web: www.vivi-realestate.com