





# Detached Villa in Benahavís

Price € 3,450,000

Bedrooms	5
Bathrooms	5
Build Size	725 m <sup>2</sup>
Terrace	100 m <sup>2</sup>
Plot Size	825 m <sup>2</sup>

## SETTING

- ✓ Close To Sea
- ✓ Close To Marina
- ✓ Close To Town
- ✓ Urbanisation
- ✓ Marina

## ORIENTATION

- ✓ South

## CONDITION

- ✓ Excellent

## POOL

- ✓ Private

## CLIMATE CONTROL

- ✓ Air Conditioning
- ✓ Fireplace

## VIEWS

- ✓ Sea
- ✓ Garden
- ✓ Port
- ✓ Pool
- ✓ Panoramic

## FEATURES

- ✓ Covered Terrace
- ✓ Games Room
- ✓ Ensuite Bathroom
- ✓ Fitted Wardrobes
- ✓ Guest Apartment
- ✓ Private Terrace
- ✓ Utility Room

## FURNITURE

- ✓ Fully Furnished

## KITCHEN

- ✓ Fully Fitted

## GARDEN

- ✓ Private

## SECURITY

- ✓ Gated Complex

## PARKING

✓ Garage

## UTILITIES

✓ Electricity

✓ Drinkable Water

✓ Telephone

## CATEGORY

✓ Investment

✓ Luxury

---

Contemporary Designer Villa with Panoramic Sea Views in La Alquería, Benahavís.

Situated in one of Benahavís' most sought-after residential communities, this elegant contemporary villa offers a unique combination of modern architecture, privacy and spectacular panoramic views of the Mediterranean Sea.

Positioned on an elevated south-east facing plot of 1,266 m<sup>2</sup>, the property enjoys complete privacy and an abundance of natural light throughout the day. Designed by renowned architect Carlos Lamas, the villa seamlessly blends contemporary lines with natural stone elements, creating a warm and sophisticated atmosphere.

The villa is distributed over two levels and offers 274 m<sup>2</sup> of built area inside. The upper floor features an impressive entrance hall that immediately frames the breathtaking sea views, a spacious master suite with dressing area and two generous guest bedrooms, all with en-suite bathrooms.

The ground floor has been designed for comfortable modern living and offers an open-plan kitchen with separate laundry area, dining room and a spacious living room with a gas fireplace. An additional room can be used as a guest bedroom or home office, alongside a guest toilet.

Outdoor living is one of the property's highlights, with 208 m<sup>2</sup> of covered and uncovered terraces, a beautifully landscaped low-maintenance garden, a large swimming pool, barbecue area, chill-out spaces and several al fresco dining areas.

La Alquería is ideally located next to Atalaya Golf and within a 10-minute drive of several renowned golf courses. International schools, supermarkets and daily amenities are only 1 km away.

Distances:

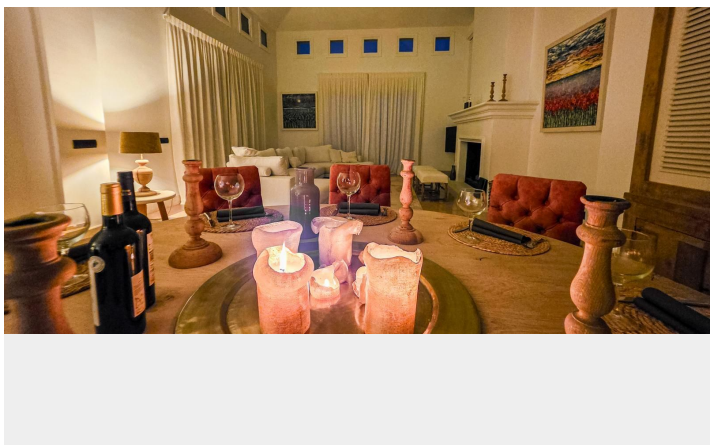
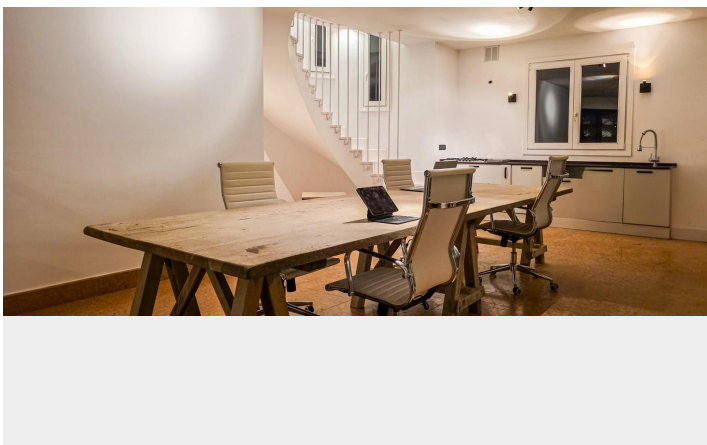
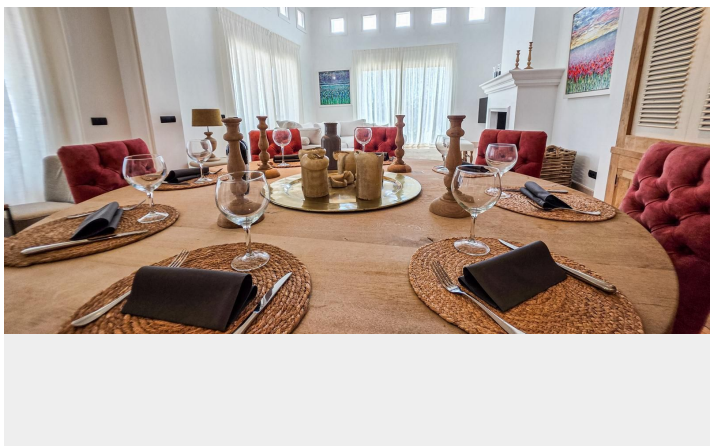
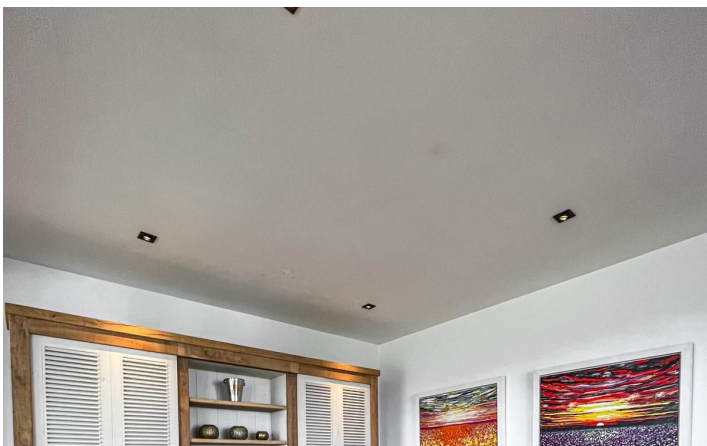
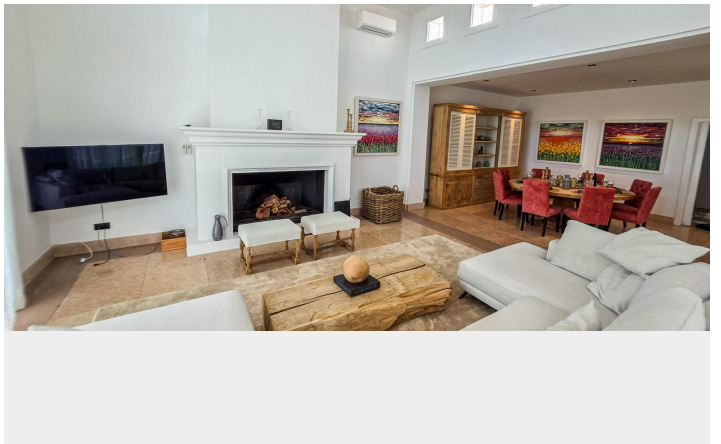
- Beach: 5 km
- Puerto Banús: 10 km
- Marbella town centre: 17 km
- Estepona: 19 km
- Málaga Airport: 65 km

An exceptional property, ideal as a permanent residence, holiday home or investment opportunity in one of the most desirable areas of Benahavís.

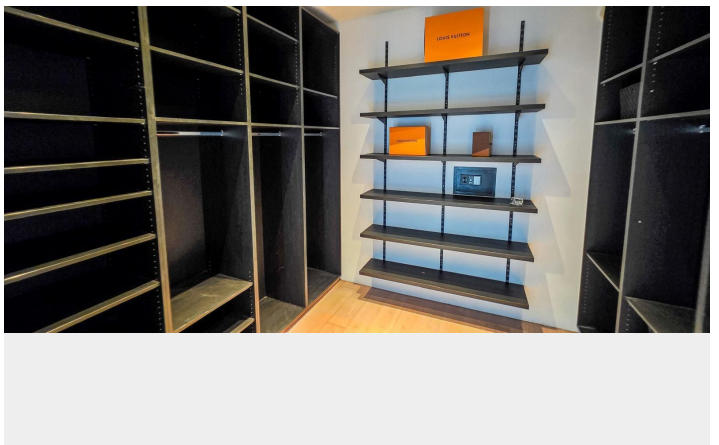
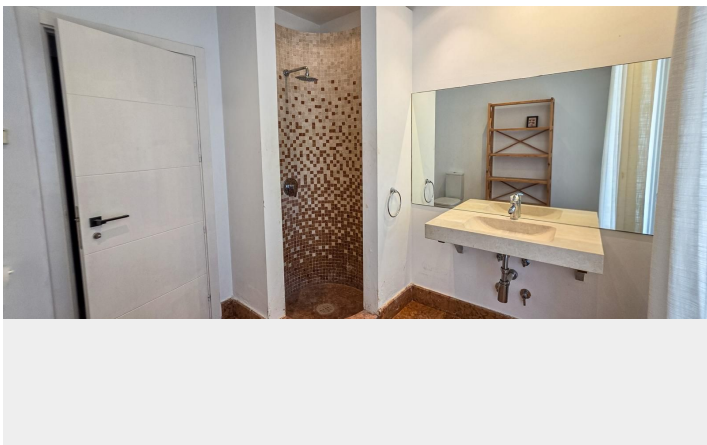
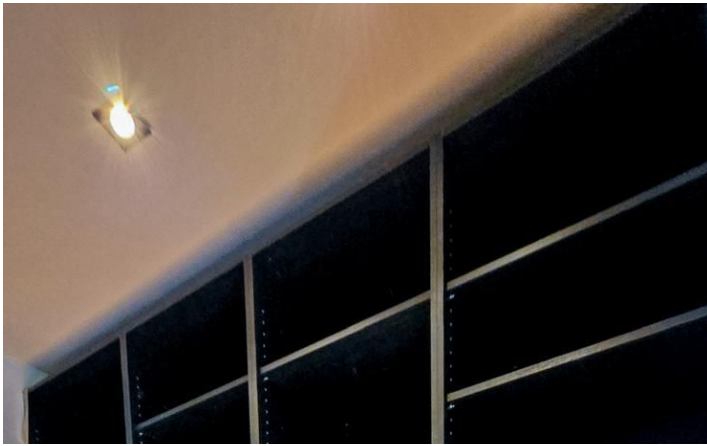
[View Property Online](#)



# GALLERY







Vivi Real Estate | Calle Almendralejo de Jarales 5 Mijas Costa, 29640

Tel: +34 672 816 975

Email: [sales@vivi-realestate.com](mailto:sales@vivi-realestate.com) | Web: [www.vivi-realestate.com](http://www.vivi-realestate.com)