



WWW.VIVI-REALESTATE.COM
WWW.VIVI-HOMES.COM



HAUS 8 SCHLAFRÄUME 9 BÄDER IN BENALMADENA

📍 Benalmadena

REF# V4438249 **12.000.000 €**

BETTEN

8

BÄDER

9

GEBAUT

1400 m²

GRUNDRISS

4500 m²

TERRACE

100 m²

One Level Villa by world-famous architect Frank Lloyd Wright *. Ideal as a family home for her, him and the children. The villa offers an incredible quality of life, plus a range of leisure, hobbies and sports all under one roof. Excellent location in a quiet residential area on a plot of 4500 m² in Rancho Domingo, Benalmadena.

The property consists of :

- a main house on one level (approx 650 sqm) with 4 bedrooms ensuite, guest toilet, kitchen, laundry and indoor pool (salt and heated).
 - small house for nanny or employees with separate Entrance
 - 2 guest apartments
 - Gym
 - Sound studio
 - Tenniscourt
- For Carlovers :
- air-conditioned garage for 16 cars for storage of Oldtimer



- second Garage for 2 Cars
 - third Garage for Bikes
 - outside parking spaces inside the property too easily park another 5 cars
- Garden with different relaxing areas with fountains, outdoor salt water pool, barbeque, playgrounds

About Rancho Domingo :

designed by the world famous architect Frank Lloyd Wright and his pupil Robert Mosher over the 1950's, is now included in the National Heritage. (Patrimonial Cultural y Histórico) In the height of Benalmadena is one of the more historic and established gated urbanisations on the Costa del Sol, where residents enjoy total privacy. International Schools, Hospital, Golf courses

International schools, golf courses, shopping, hospital and the international airport are all within a few minutes' drive.





WWW.VIVI-REALESTATE.COM
WWW.VIVI-HOMES.COM





WWW.VIVI-REALESTATE.COM
WWW.VIVI-HOMES.COM



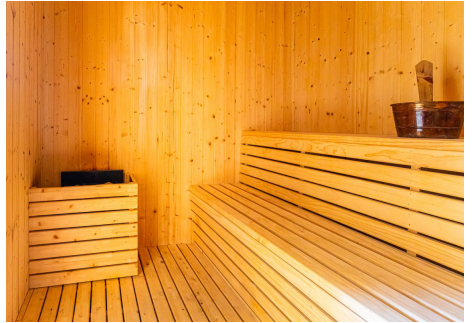


WWW.VIVI-REALESTATE.COM
WWW.VIVI-HOMES.COM



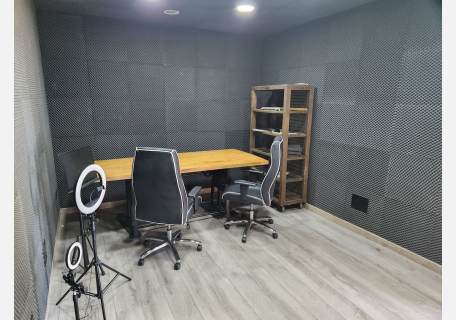
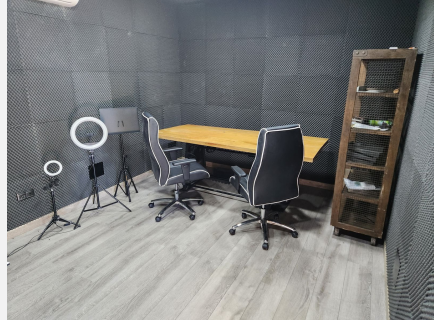


WWW.VIVI-REALESTATE.COM
WWW.VIVI-HOMES.COM





WWW.VIVI-REALESTATE.COM
WWW.VIVI-HOMES.COM





WWW.VIVI-REALESTATE.COM
WWW.VIVI-HOMES.COM

