



WWW.VIVI-REALESTATE.COM
WWW.VIVI-HOMES.COM



HAUS 4 SCHLAFRÄUME 2 BÄDER IN LA CAPELLANIA

📍 La Capellania

REF# V4675537 **1.590.000 €**

BETTEN

4

BÄDER

2

GEBAUT

300 m²

GRUNDRISS

740 m²

TERRACE

78 m²

Villa with breathtaking panoramic sea views in one of the most exclusive and highly sought-after areas in Benalmádena.

Turn this into a beautiful property with renovation. The stunning sea views and privacy is unique! The villa has 4 good size bedrooms and 2 bathrooms, 1 with jacuzzi. Open kitchen and dining room, utility room and a lovely spacious living room with beautiful stone walls and fireplace. Big pool with stunning sea views! The garden can be turned in to a terrace, padel court or whatever you dream about!

The current owner has an approved building license, meaning you can construct a brand new villa on the plot. Contact us for more information about the pre-approved project or get in direct communication with the architect.

The area:

La Capellanía in Benalmádena is known as one of the best residential areas in Costa del Sol! The area is

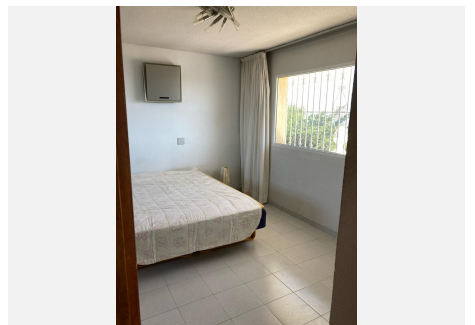
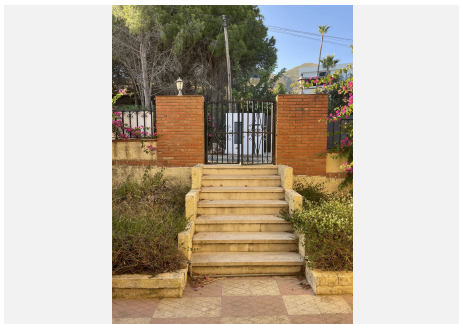
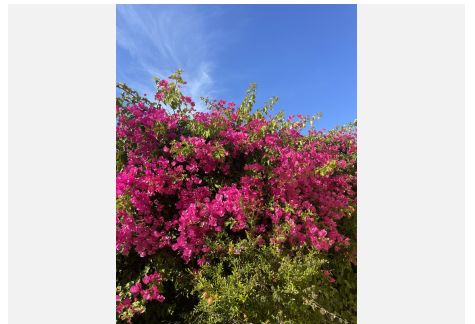
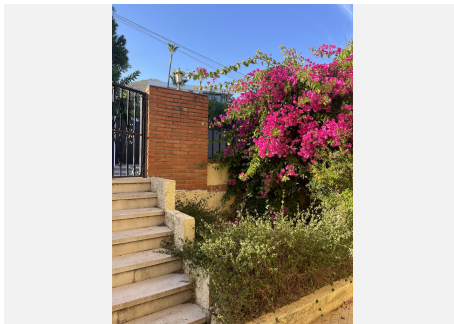
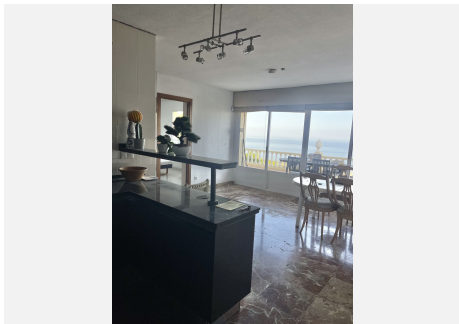
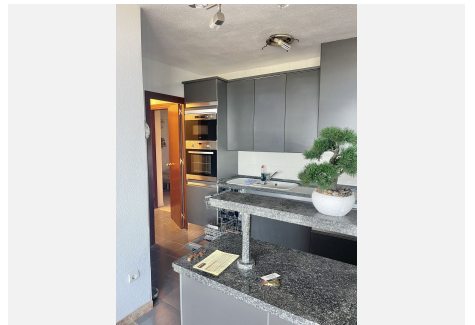
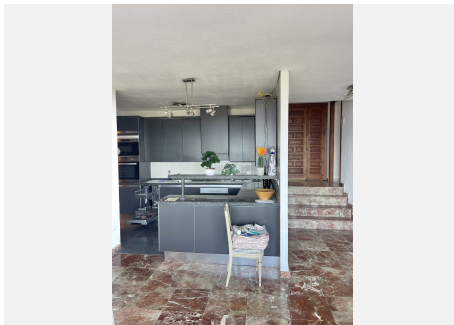


WWW.VIVI-REALESTATE.COM
WWW.VIVI-HOMES.COM

tranquil and well maintained with only 5 Villa's on a one-way street. Less than 5min. drive to local restaurants, Supermarket "Carrefour" and Playa de Carvajal, one of the best beaches on the Coast! 6min. drive to the luxury the 5-star Hilton Hotel & Sports Club, Higuerón, offering paddle courts, fitness facilities, a spa, indoor and outdoor pools, beach volleyball, restaurants, a really nice beach club by the beach, and much more!

Great area for families! There is a wide selection of international and Scandinavian schools nearby. The property is close to both Fuengirola City and Benalmadena Pueblo with many great activities for kids. Only 20min. from the airport.

EASY VIEWINGS! Don't hesitate to contact us for further details!





WWW.VIVI-REALESTATE.COM
WWW.VIVI-HOMES.COM

