



WWW.VIVI-REALESTATE.COM
WWW.VIVI-HOMES.COM



WOHNUNG IM ERDGESCHOSS 3 SCHLAFRÄUME 2 BÄDER IN ELVIRIA

📍 Elviria

REF# V4693612 **1.250.000 €**

BETTEN

3

BÄDER

2

GEBAUT

149 m²

TERRACE

18 m²

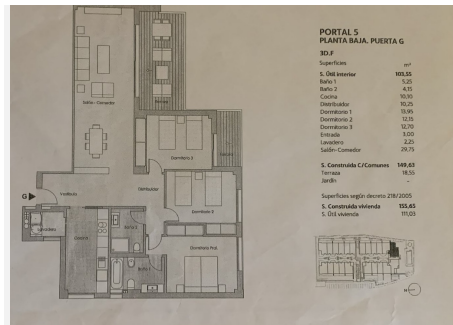
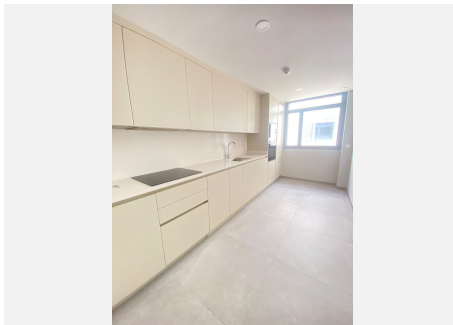
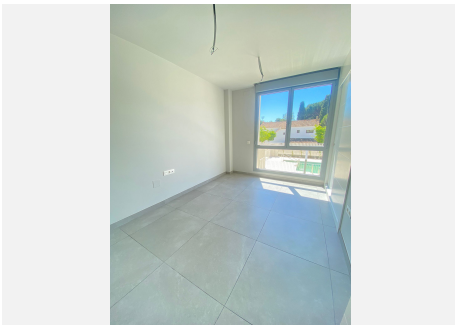
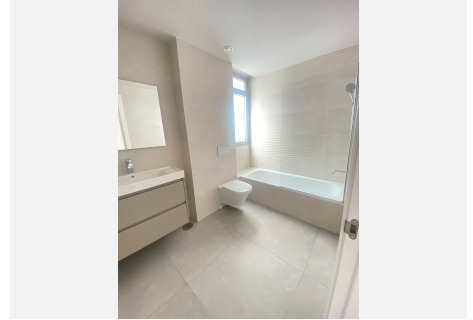
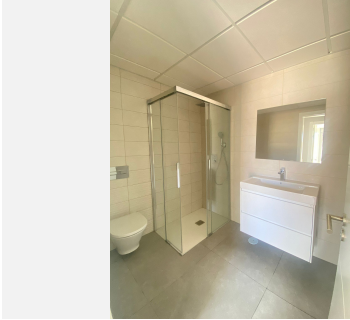
New complex is situated on Elviria Beach, within one of Marbella's most exclusive residential areas, just a 10-minute drive from Marbella city center and 30 minutes from Malaga International Airport. Elviria is renowned for hosting one of Costa del Sol's finest beaches, along with a wide array of gastronomic, entertainment, and golf offerings, featuring some of the region's premier courses such as Santa Maria, Santa Clara, Rio Real, and Marbella Golf, among others. The developer has recently completed a new complex named Estrella del Mar, positioned along the shoreline just a few minutes' stroll from a splendid beach. Constructed in a modern style employing cutting-edge technologies. At Estrella del Mar, the communal areas of the urbanization have been maximized, affording individuality and open volumes to the primary spaces.

We present to you a new exclusive apartment within this complex!

A brand-new apartment, perhaps the finest within this complex on the middle floor. Offering an excellent layout and expansive area (149 m² + terrace), with views overlooking the garden, pool, and a bit of the sea.



This presents a unique opportunity for those seeking to acquire turnkey housing within a new, contemporary complex in the prestigious East Marbella area, right on the waterfront!!!!



PORTAL 5
PLANTA BAJA, PUERTA G

30,7

Superficie	m ²
S. Sala Interior	102,18
Baño 1	4,25
Baño 2	4,41
Cocina	10,93
Distribuidor	10,21
Dormitorio 1	10,96
Dormitorio 2	11,11
Dormitorio 3	12,70
Entrada	1,02
Lavadero	2,25
Salida Comedor	29,71
S. Comedorde C/Comunidad	149,83
Terraza	18,55
Jardín	-

Superficie según decreto 2182/2005

S. Construida vivienda

S. DSI vivienda

151,65

11,02

162,67

173,69

184,71

195,73

206,75

217,77

228,79

239,81

250,83

261,85

272,87

283,89

294,91

305,93

316,95

327,97

338,99

350,01

361,03

372,05

383,07

394,09

405,11

416,13

427,15

438,17

449,19

460,21

471,23

482,25

493,27

504,29

515,31

526,33

537,35

548,37