



WWW.VIVI-REALESTATE.COM
WWW.VIVI-HOMES.COM



STADTHAUS 4 SCHLAFRÄUME 3 BÄDER IN ALOHA

📍 Aloha

REF# V4730596 **1.175.000 €**

BETTEN

4

BÄDER

3

GEBAUT

198 m²

GRUNDRISS

190 m²

TERRACE

76 m²

Step into the realm of luxury living as we introduce this exquisite family townhouse nestled within the heart of an esteemed, time-honoured community, adorning a serene avenue lined with opulent villas.

Behold the allure of this four-bedroom sanctuary, boasting a meticulously renovated interior bathed in the gentle embrace of natural light.

Your journey begins on the entrance level, where a state-of-the-art, open-style German kitchen by Nobilia awaits, adorned with top-tier appliances from renowned brands. Venture through to the splendid rear patio, a haven of culinary delights featuring a built-in kitchen, BBQ, and ample seating for al fresco dining or basking in the sunshine. Tucked away discreetly is the laundry area, ensuring convenience without compromise.

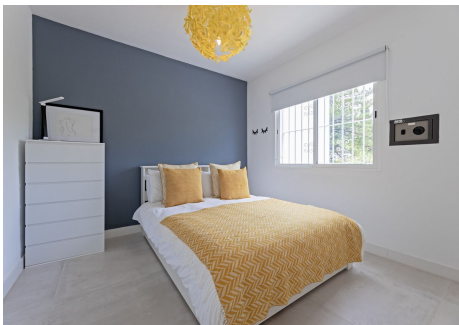
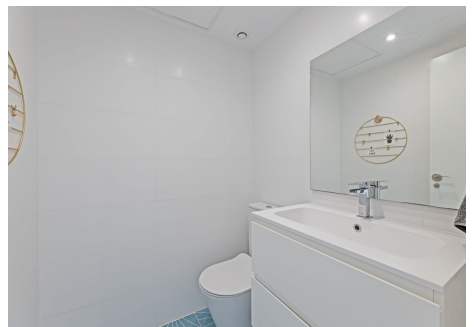
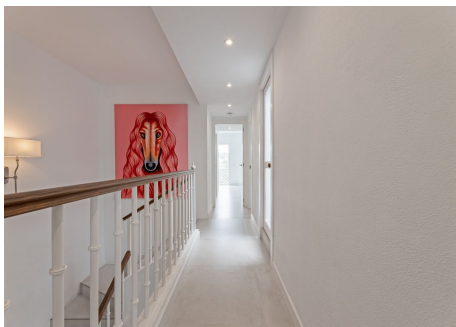
Step further into the embrace of luxury as you enter the generously proportioned lounge and dining area, adorned with sweeping porcelain flooring. Here, the boundary between indoors and outdoors blurs



effortlessly as sliding doors lead to a charming terrace, partially covered for year-round enjoyment. Revel in the added comfort of electrical blinds and a toledo, ensuring relaxation and privacy at your fingertips.

Ascend to the upper level, where serenity meets sophistication in the master bedroom with its ensuite bathroom, offering a haven of relaxation. Discover an additional full bathroom and three generously sized bedrooms, one of which is transformed into a haven for gamers, catering to every lifestyle need.

Positioned for utmost privacy, this impeccable residence stands as a testament to refined living. Enjoy the convenience of a short stroll to an array of exceptional bars and restaurants, completing the portrait of an idyllic lifestyle.





WWW.VIVI-REALESTATE.COM
WWW.VIVI-HOMES.COM

