



WWW.VIVI-REALESTATE.COM
WWW.VIVI-HOMES.COM



HAUS 5 SCHLAFRÄUME 6 BÄDER IN BENAHAVÍS

📍 Benahavís

REF# V4765321 **1.750.000 €**

BETTEN

5

BÄDER

6

GEBAUT

590 m²

GRUNDRISS

2000 m²

TERRACE

150 m²

This incredible mansion with a picturesque view of the Monte Mayor valley, located in a quiet area, offers tranquility, a feeling of peace and comfort.

Mansion for sale in Monte Mayor, Costa del Sol, with impressive views of the sea, mountains, golf courses and forest. The total area of the mansion is 590 m², 5 bedrooms, 6 bathrooms, 3 integrated and fully equipped kitchens.

150 m² terrace. Incredible garden and 2000 m² plot.

Orientation: East.

Upon entering the house, you are met with a view of the mountains, forest and garden, adorning each room and immersing you in the beauty and privacy of nature. On the first floor there is a spacious kitchen, a dining room, a bedroom and 2 bathrooms.

On the second floor there is a living area with a fireplace and high ceilings, 3 bedrooms and 2 bathrooms, a



dressing room.

On the ground floor there is a magnificent view of the mountains, the pool and the garden. Large living area, integrated kitchen, games area, bedroom, dining room, sauna, 2 bathrooms and storage room. The condition of the mansion is excellent. Completely renovated.

Features: swimming pool, covered terrace, built-in wardrobes, climate control, air conditioning, fireplace, underfloor heating, sauna, games room, storage room, barbecue area, cellar, parking space, WiFi.

Private garden, incredibly beautiful and green.

Secure and gated complex with 24 hour security.

Community expenses: €158 month

Water: €145 month

Endesa: €260/month

IBI tax: €848 per year.

Basic characteristics:

Mansion

3 floors

Barbecue area with kitchen in the garden.

590 m² total area, plot of 2000 m²

5 bedrooms

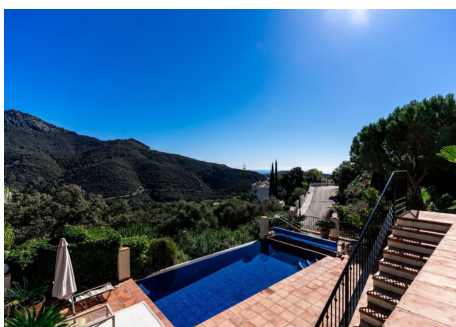
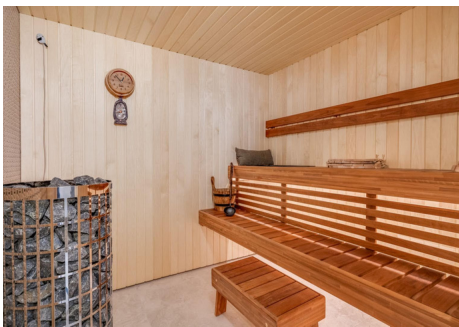
6 bathrooms

Terrace

Parking space included in the price

Second-hand home in excellent condition

Orientation: east





WWW.VIVI-REALESTATE.COM
WWW.VIVI-HOMES.COM

