



WWW.VIVI-REALESTATE.COM  
WWW.VIVI-HOMES.COM



## STADTHAUS 3 SCHLAFRÄUME 3 BÄDER IN NUEVA ANDALUCÍA

📍 Nueva Andalucía

REF# V4374322 1.195.000 €

BETTEN

3

BÄDER

3

GEBAUT

241 m<sup>2</sup>

TERRACE

84 m<sup>2</sup>

Located next to the Aloha Golf Club, this fully renovated townhouse is stunning and offers beautiful views to the golf course and the Concha mountain, all in a tranquil and private setting.

The property is distributed over two floors. The ground floor boasts a brand new open plan kitchen and a spacious dining/living area that opens up onto a lovely terrace offering dining and sitting areas. On this floor there are two bedrooms -one of them used as a study- that share a full bathroom.

The master suite and the second bedroom occupy the top floor and both have access to their own spacious terrace with views of the golf course and the Concha mountain.

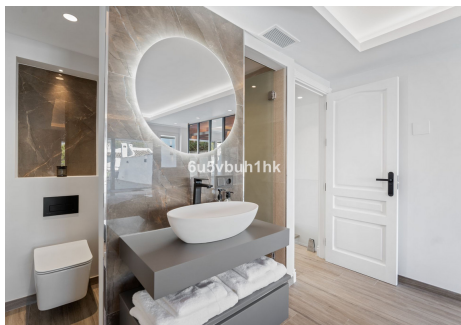
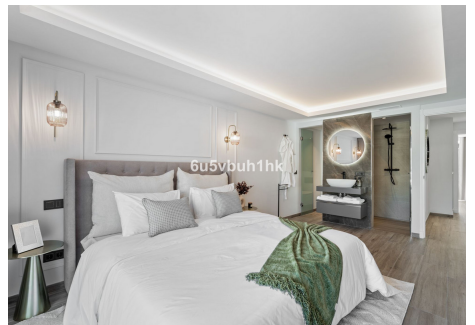
This property has been tastefully refurbished with particular attention to detail, qualities and finishes. With a southwest orientation, its outdoor spaces are perfect to enjoy the tranquil surroundings and beautiful



WWW.VIVI-REALESTATE.COM  
WWW.VIVI-HOMES.COM

sunsets and to entertain family and friends.

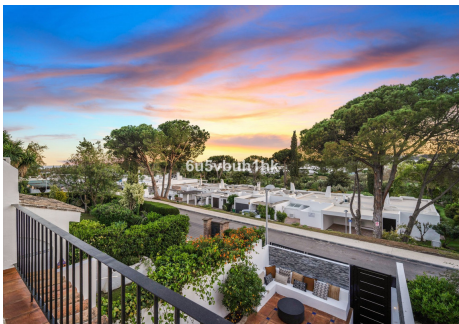
This home is located in a gated community that offers mature gardens and a shared swimming pool. The area of Aloha enjoys proximity to amenities, restaurants, shops and renowned international schools. Puerto Banus, Puente Romano and the centre of Marbella are only a short distance away by car.







WWW.VIVI-REALESTATE.COM  
WWW.VIVI-HOMES.COM







WWW.VIVI-REALESTATE.COM  
WWW.VIVI-HOMES.COM

