



Penthouse in Benalmadena

Price € 597,000

Bedrooms	2
Bathrooms	2
Build Size	236 m²
Terrace	147 m²
Plot Size	383 m²

SETTING

- ✓ Close To Shops
- ✓ Close To Sea

ORIENTATION

- ✓ East
- ✓ South
- ✓ West

CONDITION

- ✓ Good

POOL

- ✓ Communal

CLIMATE CONTROL

- ✓ Air Conditioning

VIEWS

- ✓ Sea

FEATURES

- ✓ Covered Terrace
- ✓ Lift
- ✓ Private Terrace
- ✓ Paddle Tennis
- ✓ Storage Room

FURNITURE

- ✓ Fully Furnished

KITCHEN

- ✓ Fully Fitted

GARDEN

- ✓ Communal

SECURITY

- ✓ Safe

PARKING

- ✓ Garage

Front Sea View Penthouse

Experience the ultimate in luxury living with this spacious and bright penthouse offering spectacular front sea views from every room.

****Features:****

Size:** 236m² built

Living Room:** 30 meters, filled with natural light

Kitchen:** Large, with dining area

Bedrooms:** 2 double bedrooms

Bathrooms:** 2 full bathrooms

Terrace:** 47 meters on the ground floor

Solarium:** 100 meters

****Amenities:****

- Beautifully landscaped gardens
- Swimming pool
- Paddle tennis court
- Children's playground

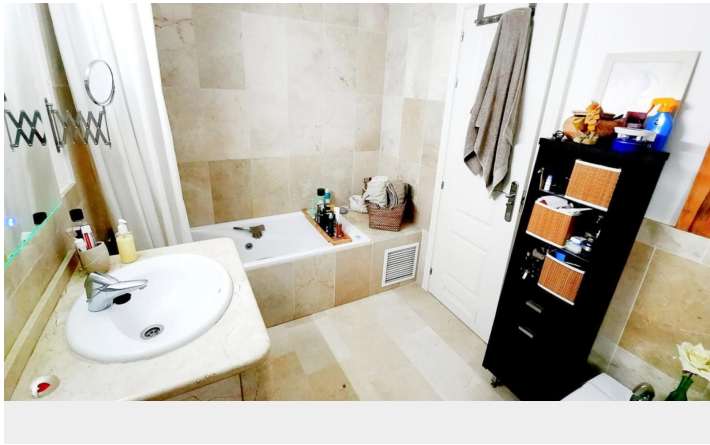
****Extras:****

- Garage space included
- Storage room included

This penthouse provides an unparalleled living experience with all rooms boasting stunning sea views. The extensive outdoor spaces, including the terrace and solarium, are perfect for relaxation and entertaining. The community amenities ensure a vibrant and active lifestyle for all residents.

[View Property Online](#)

GALLERY





ViVi Real Estate | Calle Almendralejo de Jarales 5 Mijas Costa, 29640
Tel: +34 672 816 975
Email: sales@vivi-realestate.com | Web: www.vivi-realestate.com